

JSMEA's Head and Overseas Offices

● Head Office

Japanese Marine Equipment Association

6th Floor, Kaiyo Senpaku Building,
15-16, Toranomon 1-chome, Minato-ku, Tokyo 105-0001,
Japan

Tel: +81-3-3502-2041
Fax: +81-3-3591-2206
E-mail: info@jsmea.or.jp
URL: <http://www.jsmea.or.jp>

● Overseas Offices

• Shanghai

JETRO Shanghai, Ship Machinery Department
21st Floor, Shanghai International Trade Centre,
2201, Yan An Xi Road, Shanghai 200336, P.R.C.

Tel: +86-21-6270-0489
Fax: +86-21-6270-0499

• London

Japan Ship Centre (JETRO), Ship Machinery Department
2nd Floor, 6 Lloyd's Avenue, London EC3N 3AX UK

Tel: +44-20-7680-9456
Fax: +44-20-7680-9416

E-mail: info@jsc.org.uk
URL: <http://www.jsc.org.uk>

• Singapore

JETRO Singapore, Ship Machinery Division
Hong Leong Building, #38-01 to 05 #37-02A
16 Raffles Quay, SINGAPORE 048581

Tel: +65-6221-8174
Fax: +65-6224-1169

EXHIBITORS

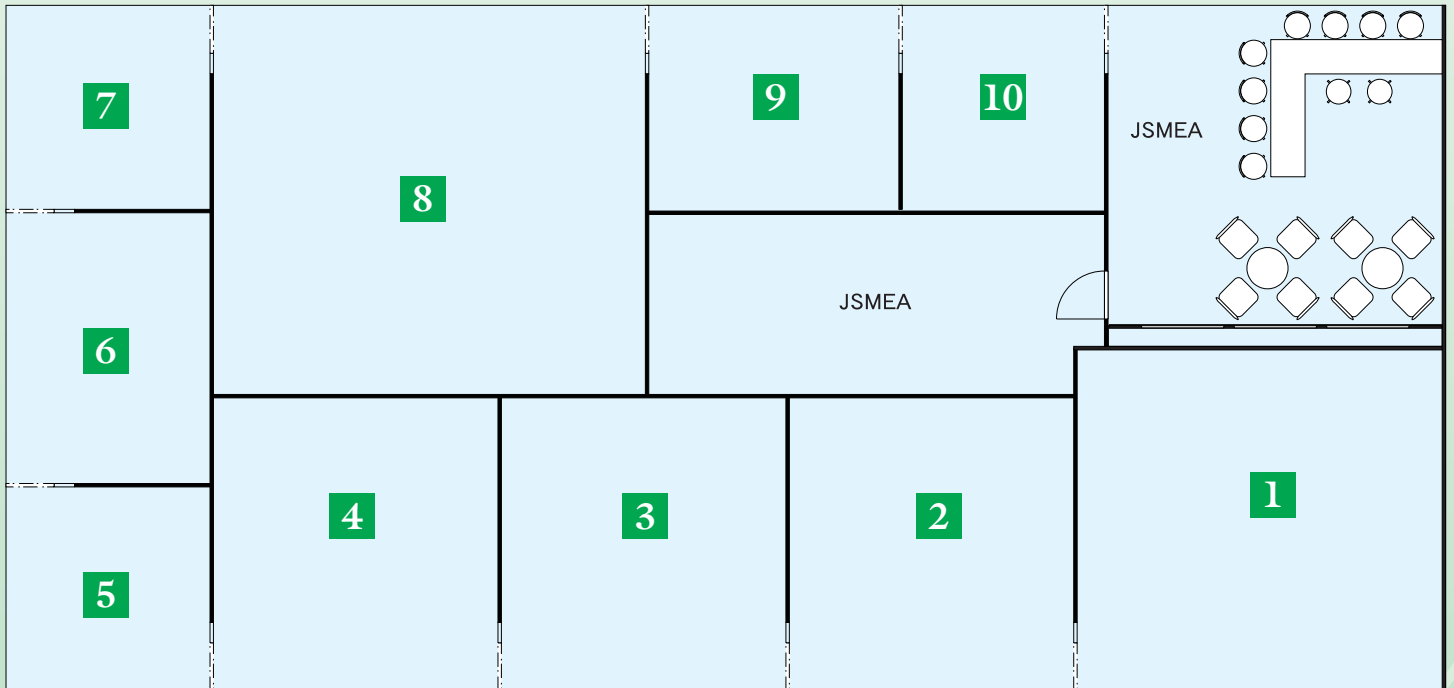
DAIHATSU DIESEL MFG. CO., LTD.	6
FUJI TRADING CO., LTD.	8
JRCS CORPORATION	10
KAWASAKI HEAVY INDUSTRIES, LTD. ...	12
MUSASINO CO., LTD.	14
NABTESCO CORPORATION	16
NANIWA PUMP MFG. CO., LTD.	18
TAIKO KIKAI INDUSTRIES CO., LTD.	20
TSUJI HEAVY INDUSTRIES CO., LTD.	22
YANMAR CO., LTD.	24

NIPPON HAKUYO ELECTRONICS, LTD. .-	26
NISHISHIBA ELECTRIC CO., LTD.	27

JSMEA

JSMEA

DAIHATSU DIESEL MFG. CO., LTD. ···	1
FUJI TRADING CO., LTD. ·····	2
JRCS CORPORATION ·····	7
KAWASAKI HEAVY INDUSTRIES, LTD. ···	6
MUSASINO CO., LTD. ·····	5
NABTESCO CORPORATION ·····	10
NANIWA PUMP MFG. CO., LTD. ·····	4
TAIKO KIKAI INDUSTRIES CO., LTD. ···	3
TSUJI HEAVY INDUSTRIES CO., LTD. ···	9
YANMAR CO., LTD. ·····	8



Since its establishment in 1907, Daihatsu Diesel Mfg. Co., Ltd. has pioneered the ages and has maintained a first rate position in the Diesel engine business. Our Diesel engines in the 50 to 7000kW range has been very popular in both the overseas and home markets, confirming Daihatsu Diesel as the leading company in this field. We believe our reputation is the result of our dedicated and consistent efforts to provide reliable products, and that it is our duty as an enterprise to uphold the Daihatsu principles and corporate attitude. Our constant efforts to achieve the highest quality can be seen in the industry-leading quality assurance systems of Daihatsu Diesel's Headquarter and Moriama Plants, which has been certified by Lloyd's Register Quality Assurance Ltd. as satisfying the requirements of ISO9001.

Daihatsu Diesel, targeting the global market, will continue fostering a progressive business culture. Furthermore, we are fully determined to fulfill the trust and expectations of our valued customers, and to contribute to the society through technological innovations with emphasis on environmental consciousness and quality.

● Main Products

Marine Propulsion and Auxiliary Diesel Engines

● Tokyo Office

2-10, Nihonbashi-honcho 2-chome, Chuo-ku,
Tokyo 103-0023, Japan
Tel: +81-3-3279-0827 Fax: +81-3-3245-0395
<http://www.dhtd.co.jp>

● Liaison Offices

- Daihatsu Diesel (Europe) Ltd.
7th Floor, Peninsular House, 36 Monument Street,
London EC3R 8LJ, U.K.
Tel: +44-20-7626-4600 Fax: +44-20-7626-6020
- Daihatsu Diesel (Europe) Ltd.'s agent
Wilhelm Rump KG (GmbH & Co.)
Buchheisterstraße 6, 20457 Hamburg, Germany
Tel: +49-40-3178420 Fax: +49-40-3194841

Features of New Model Engine

Developed as a large DC series engine, the DC-32 is reliable and strong, incorporating experiences gained in developing the DK engine, and is based on the DC series development concept.

The compression ratio is the highest of any engine in this class, and the piston combustion chamber is shaped optimally for heavy fuel oil combustion, using a highly efficient supercharger. These features ensure stable low-load combustion of heavy fuel oil.

Incorporating an optimal intake port shape, a fuel injection pump with high injection pressure, and a noncooled fuel nozzle, Daihatsu has achieved low fuel consumption by matching these features to the most suitable conditions. The DC-32 meets increasingly strict environmental regulations by using a shape enabling clean combustion based on an analysis of the combustion chamber.

Taking into operability in projected maintenance, this engine enables the power unit — cylinder head, cylinder liner, piston, and connecting rod — to be opened from the engine by one operation.

Electronic Engine Control

To make engine handling easier and reduce exhaust emission performance, Daihatsu introduces control devices such as electronic monitoring in the engine, an electronic governor, and electronic fuel oil injection device.

Low Marine Auxiliary Engine Load

Using 2 fresh-water cooling systems — a cooler and a jacket for engine cooling — Daihatsu has kept jacket cooling water at a constant high temperature. For the air cooler, Daihatsu uses 2-stage cooling in which high-temperature jacket-cooling fresh water and low-temperature fresh water of the cooler system flow. Air is heated automatically to ensure stable heavy oil combustion at a low load.

Reliability, Durability, and Component Function

Daihatsu has reviewed the cooling water system, channel configuration, and engine lubrication, and have arranged the pump, cooler, and other auxiliary machinery in front of the engine to guard against component malfunction. The DC-32 is simple and excellent in handling thanks to the significantly reduced number of piping and components. Advanced structural analysis has been introduced via new software for major operating sections and components. Daihatsu plans to confirm quality through continuous engine endurance operation.





Fuji Trading Co., Ltd. was established as a marine supplier in 1953 in Kobe, Japan. Over 50 years since then, the company has expanded and diversified into a supplier of technology, offshore drilling equipment and machinery as well as a developer of new markets and business opportunities.

Our job is to make procurement, transportation, and customs clearance of the required goods for our customers who travel around a unique market of "Marine" on a global scale by ship. We supply their requirements safely and accurately at main ports in the world within a limited time.

Through the above business, we contribute to the world trade by supporting smooth and economical ship's operation. In order to execute our task, we give the highest priority to the partnership with our customers, business acquaintances and makers. We are now upgrading and integrating our three functions, that is; information, procurement and physical distribution.

We have been rendering quality services of ship's stores, provisions, machinery, spare parts, engineering and so on. With the international network through the main depots and offices at Kobe, Yokohama, Tokyo, Rotterdam, London, Dubai, Singapore, Hong Kong, Shanghai, Pusan, and Virginia, we are ready to provide the professional services at any time and place.

URL: <http://www.fujitrading.co.jp/>

TAKASHINA LIFE PRESERVERS CO., LTD.

Takashina Life Preservers Co., Ltd. was established in 1935 in Osaka, Japan. We manufacture products to protect our water environment & safety of those who work or recreate on water. Key products include life jackets, life buoys, immersion suits, dry suits, foul weather gear, and other marine accessories. It is our goal to satisfy our customers with a blend of quality, performance, and cost.

URL: <http://www.jsmea.or.jp/kaain/takashina/>

● Offices in Japan

- Kobe Office
Tel: +81-78-413-2601 Fax: +81-78-413-1386
e-mail: mhq@fujitrading.co.jp
- Yokohama Office
Tel: +81-45-622-5661 Fax: +81-45-629-1007
e-mail: supplyyh@fujitrading.co.jp
- Tokyo Office
Tel: +81-3-5783-7390 Fax: +81-3-3450-7100
e-mail: tokyo@fujitrading.co.jp

● Group Companies in Japan

- Fuji Transport Systems Co., Ltd.
Tel: +81-78-411-2633 Fax: +81-78-411-3178
e-mail: ftr@fujitransport.co.jp
- Yokohama Tsusho Co., Ltd.
Tel: +81-45-621-8588 Fax: +81-45-621-8662
e-mail: info@yokotsu.co.jp

● Overseas Group Companies

- Europe
Fuji Trading (Marine) B.V., Rotterdam
Tel: +31-10-429-8833 Fax: +31-10-429-5227
e-mail: info@fujitrading.nl
Fuji Trading London Office
Tel: +44-20-7623-1623 Fax: +44-20-7623-1624
e-mail: mail@fujitrading.co.uk
- Middle East
Middle East-Fuji (L.L.C.)
Tel: +971-4-347-4444 Fax: +971-4-347-2771
e-mail: info@mef.ae
- Asia
Fuji Trading (Singapore) Pte. Ltd.
Tel: +65-6264-1755 Fax: +65-6265-0443
e-mail: info@fujifts.com
Fuji Trading (Marine) Co., Ltd., Hong Kong
Tel: +852-2529-9177 Fax: +852-2865-6175
e-mail: info@fujitradinghk.com
Hanil-Fuji (Korea) Co., Ltd.
Tel: +82-51-647-8301 Fax: +82-51-631-7735
e-mail: shipstore@hanilss.com
Fuji Trading (Shanghai) Co., Ltd.
Tel: +86-21-6853-8813 Fax: +86-21-5821-1257
e-mail: ftzstores@fujitrading.net / ftzrepair@fujitrading.net
- U.S.A.
Fuji Trading (America) Inc.
Tel: +1-757-873-4110 Fax: +1-757-873-4123
e-mail: fta@fujitrading.us

● Exhibits

1. Information related soft and hardware
2. Procurement related soft and hardware
3. Distribution related soft and hardware

With the above three main themes, we have exhibited what Fuji can provide for our customers now.

- Global Technical Network Service
- "FINE (Fuji Information Net)" system which provides 24 hours information services of your spare parts on web-site for free.
- IMPA catalogue on CD-ROM
- Immersion Suits of Takashina Life Preservers make.

● **Outline of Company**

JRCS is recognized internationally as a leading manufacturer of high quality marine products designed to meet the classification societies' requirements for complete Engine, Electrical and Cargo Control, Monitoring and Alarm Systems, Instrumentation, and other associated equipment for a wide range of vessels.

● **Main Products**

- Main Switchboards (MV & LV)
- Emergency Switchboards
- Starter Panels
- Integrated Automation Systems (IAS)
- Alarm, Monitoring & Control Systems
- Battery Charging & Discharging Panels
- UPS (Uninterruptible Power Supply)
- Engine Control Consoles
- Cargo Control Systems
- Ship Data Analysis Systems
- Generator Plant Control & Power Management Systems
- Cold Ironing (AMP) Systems

● **Head Office**

1-2-14 Higashiyamato-cho, Shimonoseki-shi,
Yamaguchi-ken, 750-8515 Japan
Tel: +81-832-61-0300 Fax: +81-832-61-0330
E-mail: jrcs@jrcs.co.jp URL: http://www.jrcs.co.jp

● **Overseas Liaison Office**

123 Cranbourne Road, Ashton-Under-Lyne, OL6 8QP, UK
Tel: +44-161-308-3600 Fax: +44-161-308-3601
E-mail: jrcs@btconnect.com

● **JRCS Euro Marine Service B.V.**

Westblaak 140, 3012 KM, Rotterdam, The Netherlands
Tel: +31-10-4149834 Fax: +31-10-4123672
E-mail: eu-service@jrcs.co.jp

● **Exhibits**

- OASIS (Integrated Automation System)
Operationally Advanced Super Integrated System
- SMS-22-K (Alarm, Monitoring & Control System)
- Cold Ironing (AMP, Alternative Maritime Power) System

● **Product Functions**

- **OASIS (IAS)**
 - Designed to comply with high grade specifications for LNG Carriers, Cruise Ships, FPSOs etc.
 - Full monitoring and control functions using high definition graphic display screens
 - Large LCD color "Touch Screen" displays plus Touch Pad and Trackball options
 - Wide-ranging functions including Process Control, Motor Control, Value Control, Generator Control plus many more...
- **SMS-22-K (AMCS)**
 - Excellent cost performance
 - Major reduction of installation space
 - Exceptional user-friendly "Touch Screen" operation
 - Highly suitable for both new construction and retrofit projects
- **Cold Ironing (AMP) System**
 - System to shut down a ship's engine and power the vessel via shore-side electrical power while at port
 - One of the ways that contribute to reduction of emissions from vessels docked at port
 - For container ships
Use of a specially-designed 40' container incorporating a cable reel and an MV switchboard to receive shore power
 - No need for large-scale inboard modification on existing vessels due to JRCS's plan





Since its establishment in 1878, Kawasaki Heavy Industries, Ltd. has dedicated itself to innovative technological development and has been active in business worldwide.

It has expanded from its origin in shipbuilding to rolling stock, aircraft, machinery, plants and equipment, bridges, motorcycles and more.

Now Kawasaki is engaged in areas such as transportation, the development of energy and of space and environmental protection; projects crucial to the lives and livelihoods of future generations.

Kawasaki is aggressive in its pursuit of technological developments – we are building dreams by staying in front.

● Main Products

- Diesel Engine, Main Steam turbine, Reduction Gear
- C.P. Propeller, Side thruster, Azimuth thruster & Integrated control system
- Main Boiler (Kawasaki Plant Systems, Ltd.)
- Steering gear, Deck machinery and Camera stabilizer on ships (Kawasaki Precision Machinery Ltd.)
- Shipbuilding & Repairing (Kawasaki Shipbuilding Corporation)

● Head Office

World Trade Center Building,
4-1, Hamamatsu-cho 2-chome, Minato-ku, Tokyo 105-6116, Japan
Tel: +81-3-3435-2374 Fax: +81-3-3435-2022
<http://www.khi.co.jp/>

● Liaison Offices

- Kawasaki Heavy Industries (Europe) B.V.
7th Floor, Rivierstaete, Amsteldijk 166,
1079 LH Amsterdam, The Netherlands
Tel: +31-20-644-6869 Fax: +31-20-642-5725
- Kawasaki Heavy Industries (UK) Ltd.
4th Floor, 3 St. Helen's Place, London EC3A 6AB,
United Kingdom
Tel: +44-20-7588-5222 Fax: +44-20-7588-5333

● Affiliated Companies

- Kawasaki Plant Systems, Ltd.
11-1, Minamisuna, 2-chome, Koto-ku, Tokyo 136-8588, Japan
Tel: +81-3-3615-7013 Fax: +81-3-3615-9665
<http://www.khi.co.jp/kplant>
- Kawasaki Precision Machinery Ltd.
234 Matsumoto, Hasetani-cho, Nishi-ku, Kobe 651-2239, Japan
Tel: +81-78-991-1133 Fax: +81-78-991-3186
<http://www.khi.co.jp/kpm/>

- Kawasaki Shipbuilding Corporation
1-1, Higashikawasaki-cho 3-chome, Chuo-ku, Kobe 650-8670, Japan
Tel: +81-78-682-5501 Fax: +81-78-682-5514
<http://www.kawasakizosen.co.jp>

• Main Steam Turbine



• Main Boiler



• Reduction Gear



• Diesel Engine



• Azimuth thruster



• Side Thruster



• Steering Gear





Musasino is a major manufacturer of marine tank level gauges in the World.

We are supplying two kinds of cargo tank level gauge, one is radar type level gauge for ocean going tankers, and the other is float type level gauge for coastal tankers. Musasino, in Japan, has two sister company, Musasino Tech in China and Musasino Korea, Musasino group will be supplying qualified equipment to major shipbuilding market.

In this April, Musasino will found business and after service office in the Netherlands.

● Main Products

- Radar type level gauge for cargo tank
- Float type level gauge for cargo tank
- Electric pressure type level gauge for ballast tank
- Pneumatic type level gauge with self-pump
- Pneumatic type level gauge
- Independent level alarm system using ultrasonic and float
- Water ingress alarm system using ultrasonic

LEVEL ECHO



LEVEL WATCH-2



● Head Office

1-2-15, Minamiyukigaya, Ohta-Ku, Tokyo, Japan
URL:<http://www.musasino.co.jp/>
Tel: 81-3-3726-4412 Fax: 81-3-3726-1557
E-mail:sales@musasino.co.jp

● European office and local agent

Musasino Europe office in the Netherlands
Beukers Marine Instrumentation | the Netherlands
Musasino Tech in China
Musasino Korea Co.,Ltd.

NABCO Ltd. and TS Corporation had been integrated in Nabtesco Corporation in October 2004 aimed at being the world's leading manufacture of motion control systems for Air, Land and Marine field applications by combining the strength of both Group's technology.

NABTESCO Corporation has played a leading role in the total control system in marine field, especially M-800 series main engine remote control system and MG-800 digital governor system has enjoyed a good reputation among customers the world over.

● Main Products

- Main Engine (diesel or turbine) remote control system
- CPP, Side thruster, Steerable thruster and Water-jet remote control system
- Digital governor system
- Engine telegraph system and Telegraph logger, Revolution indicating system
- Main engine monitoring system
- Adsorption type air dryer unit for marine

● Head Office

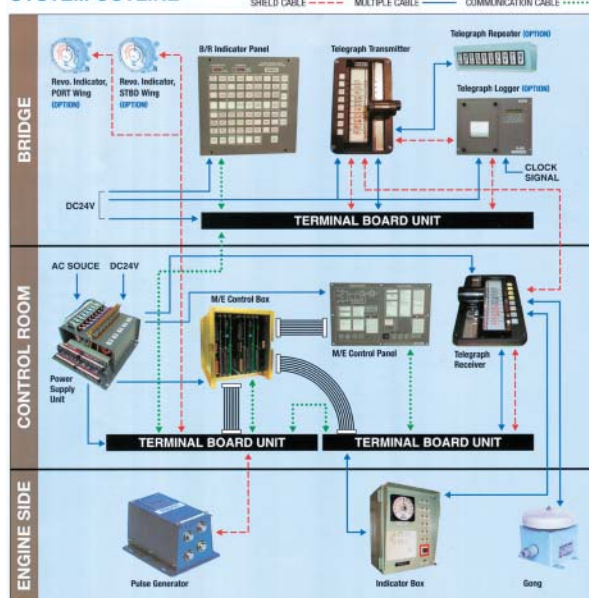
Kokusai Hamamatsucho Building, 9-18, Kaigan 1-chome, Minato-ku, Tokyo 105-0022, Japan
 Tel: +81-3-5470-2413 Fax: +81-3-5470-2417
 E-mail: marine-overseas@nabtesco.com

● Legitimate Companies

- NABMIC B.V.
 Tel: +31-180-530-590 Fax: +31-180-530-591
- NABTESCO Marine Service Singapore Pte. Ltd.
 Tel: +65-6225-6559 Fax: +65-6225-7393
- NABTESCO Marinotec Co., Ltd.
 Tel: +82-51-464-9380 Fax: +82-51-464-8250
- NABTESCO Marine Control Systems (Shanghai) Co., Ltd.
 Tel: +86-21-5852-0363 Fax: +86-21-5852-0348

M-800-III Series Bridge Maneuvering system

SYSTEM OUTLINE



● Features

- Highly visible and functional arrangement of indicator lamps and switches for easy and accurate operation
 - Flexible pattern of indicator and alarm by microcomputer
 - Data communication with easy expansion by LAN based on CAN
 - Output signal for Voyage Data Recorder as standard
 - Shorten wiring time by flat cables
 - Less wiring due to serial communication
- Even one line has a trouble, communication is possible by using remained two lines

● Panel Exhibits

Introduction of following items:

- M-800-III Series Bridge Maneuvering System & MG-800 Digital Governor System
- Worldwide network services



● Outline of Company

NANIWA PROVIDES WORLD CLASS RELIABILITY AND PERFORMANCE

Naniwa Pump Mfg. Co., Ltd., is a leading Japanese manufacturer of a wide variety of marine and industrial pumps.

Naniwa brand is known Worldwide for its superior quality and performance for all types of Marine Engine Room and Cargo Pumps.

Both the quality and design of Naniwa Pumps meet or exceed the global requirements of classification societies and national standards.

Naniwa Pump is capable of expediting all customers' needs.

● Main Products

Pumps and Steam Turbines of all types and related systems and equipment for marine applications:

(1) Engine room pumps:

- Centrifugal pumps
- Piston pumps
- Rotary gear pumps
- Hydrophore tank unit
- Rotary screw pumps
- Central priming unit

(2) Pump room pump package:

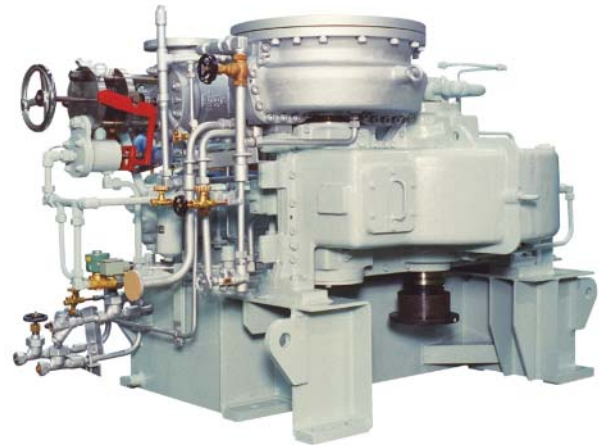
- Cargo pumps: Centrifugal and two-rotor screw types
- Water ballast pumps: Centrifugal type
- Stripping pumps: Steam driven reciprocating and two-rotor screw types
- Automatic priming, capacity regulating and stripping systems

● Head Office

11-5, Shinmachi 3-chome, Nishi-ku,
Osaka 550-0013, Japan
Tel: +81-6-6541-6231 Fax: +81-6-6541-7492
E-mail: kaigai@naniwa-pump.co.jp
Website: www.naniwa-pump.co.jp

● Exhibits

- Steam Turbine for Cargo Oil Pump
Model... ERV-32N



● Features

- High Efficiency
- Excellent performance
- Simple construction and easy maintenance
- Compact light weigh design
- Dual electric over speed trip
- Separate trip & throttle valve and governing valve

● Liaison office and/or agent

Europe Representative Office
Hemmingstedter Weg 111a
D-22609 Hamburg, Germany
Tel.: +49-40-890-5779 Fax: +49-40-890-5785
E-mail: naniwa@sinz.org

Outline of company

TAIKO, as a general manufacture of pumps and environment equipments, has produced various kinds of marine pumps, bilge separator, sewage treatment device and the cargo pump system for tankers. We continue to contribute the modernization of marine industry under motto of "Clean the sea and friendly to the earth".

● Main products

Gear pump
Screw pump
Centrifugal pump
Sewage Treatment Device
Oily Water Separator
Piston pump
Rotary blower
Vacuum pump

● Head office

Oversea Business Sect.
209-1 Shimotabuse, Tabuse-cho, Kumage-gun,
Yamaguchi 742-1598, JAPAN
Tel:81-820-52-3113 Fax: 81-820-53-1001
E-mail: business@taiko-kk.com



● Exhibits

- Bilge separator (Demonstration of separating bilge)
- Cargo control system panel for tankers

● Features

- Bilge separator
 - A high performance coalescer capable of treating emulsions is incorporated. Significantly improved service life (more than 1.5times in our company's comparison).
 - A cylindrical package type with an installation area as small as the space-saving types of conventional separators.
 - Stainless steel (SUS304) is used not only for corrosive portions of nozzle but also for parts around coalescer which constitute an essential part of the separator.



Control panel of cargo pump system

- Offer a plan and advice in accordance with user's needs
- Consult specifications in detail based on our experience in system engineering.
- Construct systems and equipment with the most advanced technology

● Agent in Europe

FUJI TRADING (MARINE) B.V.
POST BOX 2498, 3000 CL Rotterdam,
Sluysjesdijk 109, 3087 AE Rotterdam,
THE NETHER LANDS
Tel: 010-429 88 33 Fax: 010-429 52 27

● **Outline of Company**

TSUJI HEAVY INDUSTRIES, founded in 1939, is the leading manufacturer of marine cargo handling equipment such as onboard deck cranes and hatch covers, which combine reliability and efficiency with economic pricing.

The company operates two large factories - one Japan and one in China.

At the Chinese facility, in addition to the manufacturing of cranes and hatch covers, the company is building complete handysize bulk carriers.

● **Main Products**

All types of Deck Crane, Hatch Cover, Gantry Crane, Unloader System, Ro-Ro System, Life Saving Equipment, Ship Hull Structures.

● **Head Office**

177-2, Hikari-machi, Sasebo, Nagasaki 858-8501, Japan
Tel: +81-956-47-3113
Fax: +81-956-47-5700
E-mail: main.office@tsuji-hi.com
URL: www.tsuji-hi.com

● **Exhibits**

Heavy Duty Type Deck Crane "HD series"

● **Features**

The HD-type deck crane is especially designed for general cargo/bulk carriers.



Yanmar, ever since its foundation, has been developing versatile energy and labor-saving diesel engines with output ranging from 3ps to 5,000ps through its unique diesel technologies, contributing to the community through energy conservation.

Our ceaseless efforts to produce ever higher quality products were rewarded with ISO9001 certification by Lloyds (LRQA) of Britain for the Amagasaki Plant of the Large Power Products Operations Division in July 1992, confirming international recognition for the excellent quality assurance system of the plant. The Large Power Products Operations Division of Yanmar has been a pioneer in tackling environmental problems and in June, 1997, the Amagasaki Plant became the first large industrial and marine diesel engine plant in Japan to be certified under ISO14001. The marine diesel engines produced by the Amagasaki Plant were also the first in Japan to clear the emission (NOx) control regulations of the IMO. The far-sighted efforts and excellent technologies of the Large Power Products Operations Division protect our environment and are highly evaluated in the world.

The Amagasaki Plant of Yanmar aims to ensure beautiful harmony with the global environment and to contribute widely throughout industry and society to create a better future for all.

● Head Office

1-1, Yaesu 2-chome, Chuo-ku, Tokyo 104-0028, Japan.
 Tel: +81-3-3275-4909
 Fax: +81-3-3275-4969
 E-mail: katsuhiko_fujiwara@yanmar.co.jp
<http://www.yanmar.co.jp>

● Overseas Subsidiary

Yanmar Europe B.V.
 Brugplein 11, 1332 BS Almere-de Vaart, The Netherlands
 Tel: +31-36-5493200
 Fax: +31-36-5493209
 E-mail: Masayuki_Ikeuchi@yanmar.nl

● Main Products

Marine propulsion and auxiliary diesel engines

● Exhibits

Marine diesel engine, Model 6EY18 (A) L



Model 6EY18 (A) L

● Features

1. The low sac type fuel valves, variable jacket water temperature control and, valve stem seal with backpressure lip, are technologies included to reduce soiling of the combustion chamber which occurs with the use of low-grade heavy oil.
2. With the introduction of a new "stay clean" design turbocharger maintenance intervals will be lengthened while the automatic back washing LO filter allows for maintenance-free operation.
3. Compact design allows simplicity in the engine room layout.
4. With concentration of the pipe connections at the front of the engine, piping construction man-hours are reduced.
5. The intercooler and stand of turbocharger have been designed as a single compact unit. The number of parts has been reduced by 30%, further increasing ease of maintenance.
6. High probability of corresponding to future environmental regulations.

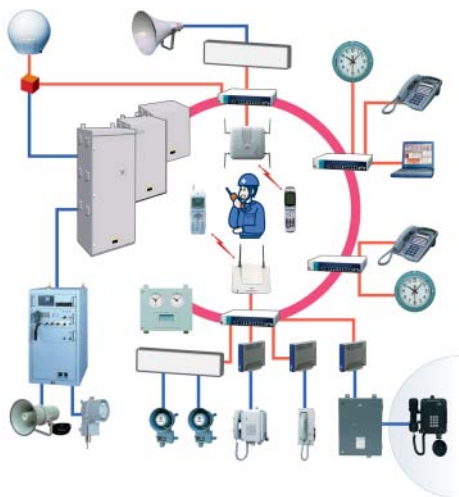
Nippon Hakuyo electronics, ltd. (NHE) was founded in 1981 as a company focusing on system engineering and sales of shipboard equipment in OKI group that is the leading group in the field of the Information Technology and Network Solution. Since then NHE has been providing not only domestic market but also world market with OKI group's rich and highly valued technical resources and additional unique technical expertise. Shizuoka OKI for Intercom equipment and OKI Denki Bosai for Fire Detection and Alarm System.

● Main Products

- Marine Integrated Communication Systems
- Fire Detection and Alarm Systems
- Public Addressing Systems
- Remote Sensing Systems and Development
- System Design, Installation, and Maintenance Services

● Head Office

2-40-7, Higashikanagawa, Kanagawaku, Yokohama,
221-0044, Japan
Tel : +81 45 453 6911
Fax: +81 45 453 6910
H.P. : <http://www.nhe.co.jp>
E-mail : nippaku@nhe.co.jp



NISHISHIBA, as a member of the Toshiba Group, has been pursuing the advancement of the control and efficient use of energy.

For the last half-century, with the combined force of power and electronics, we have been contributing to society in various ways.

We have made electric power generating system, electric systems for marine and offshore use, control systems, and industrial electric equipment systems.

● Main Products

- All kind of Generators and Motors
- All kind of Switchboards and Ventilation Fans
- Inverter control systems for Crane, Winch/Windlass, Aux. pump
- Shaft driven Generating Systems
- Electric Propulsion Systems

● Head office&Factory

1000 Hamada, Aboshi-Ku, Himeji 671-1280, Japan
Tel: +81-972-71-2448
Fax: +81-972-71-2411

● Kansai branch

Shin-Osaka Iida Building, 5-33, Nishimiyahara 1-chome,
Yodogawa-ku, Osaka 532-0004, Japan
Tel: +81-6-6397-3461
Fax: +81-6-6397-3475

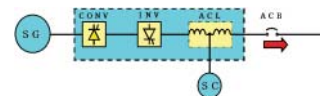


3,500kW SGS (Over hang Type)



6.6kV Thyristor inverter Control Panel

Shaft driven Generating System (SGS)



6.6kV Direct online type SGS