

VIETSHIP
2008



VIETSHIP 2008
National Convention Center
Hanoi
11-14 MARCH 2008

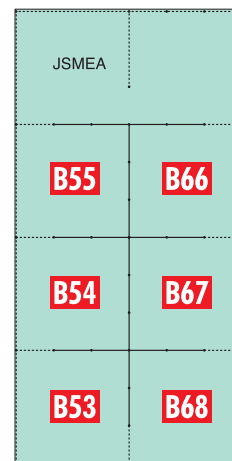
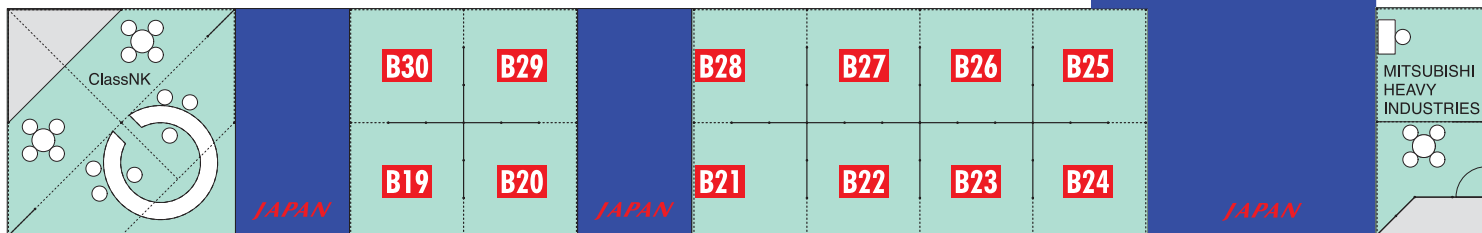
JSMEA

This article is published under a grant from
The Nippon Foundation.

Japan Marine Equipment Association

AKASAKA DIESELS LIMITED	4	B54
DAIHATSU DIESEL MFG. CO., LTD.	6	B25
FUJI TRADING CO., LTD.	8	B53
THE HANSHIN DIESEL WORKS, LTD.	10	B21
KANAGAWA KIKI KOGYO CO., LTD.	12	B26
KAWASAKI HEAVY INDUSTRIES, LTD.	14	B23
MANABE ZOKI CO., LTD.	16	B55
NYK TRADING CORPORATION	18	B68
NAKASHIMA PROPELLER CO., LTD.	20	B27
NANIWA PUMP MFG. CO., LTD.	22	B24
NIPPON HAKUYO ELECTRONICS LTD.	24	B28
SASAKURA ENGINEERING CO., LTD.	26	B30
SANSHIN ELECTRIC CORPORATION	28	B20
SHINKO IND. LTD.	30	B66
TAIKO KIKAI INDUSTRIES CO., LTD.	32	B22
TAIYO ELECTRIC CO., LTD.	34	B19
TOKIMEC INC.	36	B67
TSUJI HEAVY INDUSTRIES CO., LTD.	38	B29
KASHIWA CO., LTD.	40	
MITSUBISHI KAKOKI KAISHA, LTD.	41	
TANABE PNEUMATIC MACHINERY CO., LTD.	42	

VIET SHIP 2008 JAPAN NATIONAL STAND





● Outline of Company

AKASAKA DIESELS LIMITED is a Japanese leading manufacturer of main engine for various kinds of vessels.

In 1910, we started our business as engine repairer in Shizuoka Prefecture Yaizu City, a town of fishery. Since then, we have been manufacturing a lot of engines for fishing boat and magnified our business along with the development of domestic fishery.

Subsequently, we expanded our products' coverage to merchant vessels like cargos, tankers and bulk carriers.

Now our products are known worldwide by its high-reliability and performances backed by technologies, which is being succeeded incessantly since our foundation.

However, the situation and the demand are always changing and they never let us stop from challenging to the market. We will always support you with customer creed policy and sincerity, which meet your expectations.

● Main Products

- 2 stroke diesel engine: UE diesel engine licensed by Mitsubishi Heavy Industries Ltd.
UEC50LSE / UEC45LSE (6,225kW~13,280kW)
UEC50LS II / UEC43LS II / UEC37LS II / UEC33LS II (2,830kW~11,560kW)
- 4 stroke diesel engine: Akasaka low-speed diesel engine
A TYPE / AX TYPE (1,103kW~3,309kW)
T TYPE / K TYPE (625kW~2,000kW)
U TYPE (1,838kW~2,427kW)

● Head Office (for Overseas Market)

670-6, Yanagiaraya Yaizu Shizuoka pref. Japan
Tel: +81-54-685-6167
Fax: +81-54-685-6209
E-mail: info@akasaka.co.jp
URL: <http://www.akasaka-diesel.jp>

● Exhibits

- 6UEC50LS II 8,670kW (127min⁻¹)
- AX33 1,618kW (310min⁻¹)



6UEC50LS II



AX33

● Features

Akasaka-Mitsubishi UE Diesel Engine

- High reliability as a world wide known brand
- Lowest specific fuel consumption
- High propeller efficiency
- Low-quality fuel oil compatibility
- Easy to maintain
- Space-saving designed

Akasaka 4 Stroke Engine

- 6 cylinders in-lined, turbo charged diesel engine
- Long stroke for high efficiency
- Twin valve system for high reliability
- With all valve cage type (Air intake, exhaust & starting air valves) for easy maintenance
- Heavy fuel oil can be used

● Outline of Company

Since its establishment in 1907, Daihatsu Diesel Mfg. Co., Ltd. has pioneered the ages and has maintained a first rate position in the Diesel engine business. Our Diesel engines in the 50 to 7000kW range has been very popular in both the overseas and home markets, confirming Daihatsu Diesel as the leading company in this field. We believe our reputation is the result of our dedicated and consistent efforts to provide reliable products, and that it is our duty as an enterprise to uphold the Daihatsu principles and corporate attitude. Our constant efforts to achieve the highest quality can be seen in the industry-leading quality assurance systems of Daihatsu Diesel's Headquarter and Moriama Plants, which has been certified by Lloyd's Register Quality Assurance Ltd. as satisfying the requirements of ISO9001.

Daihatsu Diesel, targeting the global market, will continue fostering a progressive business culture. Furthermore, we are fully determined to fulfill the trust and expectations of our valued customers, and to contribute to the society through technological innovations with emphasis on environmental consciousness and quality.

● Main Products

Marine Propulsion and Auxiliary Diesel Engines

● Tokyo Office

2-10, Nihonbashi-honcho 2-chome, Chuo-ku,
Tokyo 103-0023, Japan
Tel: +81-3-3279-0827 Fax: +81-3-3245-0395
<http://www.dhtd.co.jp>

● Liaison Offices

• Daihatsu Diesel (Asia Pacific) Pte. Ltd.
128 Pioneer Road, Singapore 639586
Tel: +65-6270-7235 Fax: +65-6270-6236
e-mail: ddap@dds.com.sg

Features of New Model Engine

Developed as a large DC series engine, the DC-32 is reliable and strong, incorporating experiences gained in developing the DK engine, and is based on the DC series development concept.

The compression ratio is the highest of any engine in this class, and the piston combustion chamber is shaped optimally for heavy fuel oil combustion, using a highly efficient supercharger. These features ensure stable low-load combustion of heavy fuel oil.

Incorporating an optimal intake port shape, a fuel injection pump with high injection pressure, and a

noncooled fuel nozzle, Daihatsu has achieved low fuel consumption by matching these features to the most suitable conditions. The DC-32 meets increasingly strict environmental regulations by using a shape enabling clean combustion based on an analysis of the combustion chamber.

Taking into operability in projected maintenance, this engine enables the power unit — cylinder head, cylinder liner, piston, and connecting rod — to be opened from the engine by one operation.

Electronic Engine Control

To make engine handling easier and reduce exhaust emission performance, Daihatsu introduces control devices such as electronic monitoring in the engine, an electronic governor, and electronic fuel oil injection device.

Low Marine Auxiliary Engine Load

Using 2 fresh-water cooling systems — a cooler and a jacket for engine cooling — Daihatsu has kept jacket cooling water at a constant high temperature. For the air cooler, Daihatsu uses 2-stage cooling in which high-temperature jacket-cooling fresh water and low-temperature fresh water of the cooler system flow. Air is heated automatically to ensure stable heavy oil combustion at a low load.

Reliability, Durability, and Component Function

Daihatsu has reviewed the cooling water system, channel configuration, and engine lubrication, and have arranged the pump, cooler, and other auxiliary machinery in front of the engine to guard against component malfunction. The DC-32 is simple and excellent in handling thanks to the significantly reduced number of piping and components. Advanced structural analysis has been introduced via new software for major operating sections and components. Daihatsu plans to confirm quality through continuous engine endurance operation.





● Outline of Company

Fuji Trading Co., Ltd. was established as a marine supplier in 1953 in Kobe, Japan. Over 50 years since then, the company has expanded and diversified into a supplier of technology, offshore drilling equipment and machinery as well as a developer of new markets and business opportunities.

Our job is to make procurement, transportation, and customs clearance of the required goods for our customers who travel around a unique market of "Marine" on a global scale by ship. We supply their requirements safely and accurately at main ports in the world within a limited time.

Through the above business, we contribute to the world trade by supporting smooth and economical ship's operation. In order to execute our task, we give the highest priority to the partnership with our customers, business acquaintances and makers. We are now upgrading and integrating our three functions, that is; information, procurement and physical distribution.

We have been rendering quality services of ship's stores, provisions, machinery, spare parts, engineering and so on. With the international network through the main depots and offices at Kobe, Yokohama, Tokyo, Rotterdam, London, Dubai, Singapore, Hong Kong, Shanghai, Pusan, and Baltimore, we are ready to provide the professional services at any time and place.

TAKASHINA LIFE PRESERVERS CO., LTD.

Takashina Life Preservers Co., Ltd. was established in 1935 in Osaka, Japan. We manufacture products to protect our water environment & safety of those who work or recreate on water. Key products include life jackets, life buoys, immersion suits, dry suits, foul weather gear, and other marine accessories. It is our goal to satisfy our customers with a blend of quality, performance, and cost.

URL: <http://www.jsmea.or.jp/kaiin/takashina/>

URL: <http://www.fujitrading.co.jp/>

● Offices in Japan

- Kobe Office
Tel: +81-78-413-2601 Fax: +81-78-413-1386
e-mail: mhq@fujitrading.co.jp
- Yokohama Office
Tel: +81-45-622-5661 Fax: +81-45-629-1007
e-mail: supplyyh@fujitrading.co.jp
- Tokyo Office
Tel: +81-3-5783-7390 Fax: +81-3-3450-7100
e-mail: tokyo@fujitrading.co.jp

● Group Companies in Japan

- Fuji Transport Systems Co., Ltd.
Tel: +81-78-411-2633 Fax: +81-78-411-3178
e-mail: fttr@fujitransport.co.jp
- Yokohama Tsusho Co., Ltd.
Tel: +81-45-621-8588 Fax: +81-45-621-8662
e-mail: info@yokotsu.co.jp

● Overseas Group Companies

- Europe
Fuji Trading (Marine) B.V., Rotterdam
Tel: +31-10-429-8833 Fax: +31-10-429-5227
e-mail: info@fujitrading.nl
Fuji Trading London Office
Tel: +44-20-7236-0507 Fax: +44-20-7236-0521
e-mail: mail@fujitrading.co.uk
- Middle East
Middle East-Fuji (L.L.C.)
Tel: +971-4-347-4444 Fax: +971-4-347-2771
e-mail: info@mef.ae
- Asia
Fuji Trading (Singapore) Pte. Ltd.
Tel: +65-6264-1755 Fax: +65-6265-0443
e-mail: info@fujifts.com
Fuji Trading (Marine) Co., Ltd., Hong Kong
Tel: +852-2529-9177 Fax: +852-2865-6175
e-mail: info@fujitradinghk.com
Hanil-Fuji (Korea) Co., Ltd.
Tel: +82-51-712-8300 Fax: +82-51-631-7735
e-mail: shipstore@hanilss.com
Fuji Trading (Shanghai) Co., Ltd.
Tel: +86-21-6853-8813 Fax: +86-21-5821-1257
e-mail: ftzstores@fujitrading.net / ftzrepair@fujitrading.net
- U.S.A.
Fuji Trading (America) Inc.
Tel: +1-410-238-7985 Fax: +1-410-238-7989
e-mail: fta@fujitrading.us

● Exhibits

- Global Technical Network Service
- IMPA catalogue on CD-ROM
- Safety Equipments including
Immersion Suits,
Fire Fighting Suits,
Life Jackets,
FN Tape (Anti-Splashing Tape),
etc.

● **Outline of company**

A comprehensive manufacturer of ship propulsion system, Hanshin Diesel Works, Ltd. caters to wide range of customer demand.

Hanshin Diesel provides the original designed 4 Stroke Diesel Engine, and Kawasaki-MAN Diesel 2 Stroke Diesel Engine, Controllable Pitch Propeller, Side Thruster, Oil Purifying Equipment and Engine Monitoring and Navigation Support System.

● **Main Products**

- Hanshin 4 Stroke Diesel Engine ranging (625kW (850ps)~3,309kW (4,500ps)).
- Kawasaki-MAN B&W Diesel 2 stroke Diesel Engine ranging (2,400kW~3,900kW).
- Controllable Pitch Propeller (625kW (850ps)~3,309kW (4,500ps)) .
- Hanshin-Kawasaki Side Thruster (Thrust: 2 to 6 ton)
- Fuel oil and Lubricating oil purifying equipment
- Remote Control System

● **Offices in Japan**

- Kobe Head Office
Tel: +81-78-332-2081, Fax: +81-78-332-2080
- Akashi Office & Factory
Tel: +81-78-923-3446, Fax: +81-78-923-0555
- Tokyo Branch

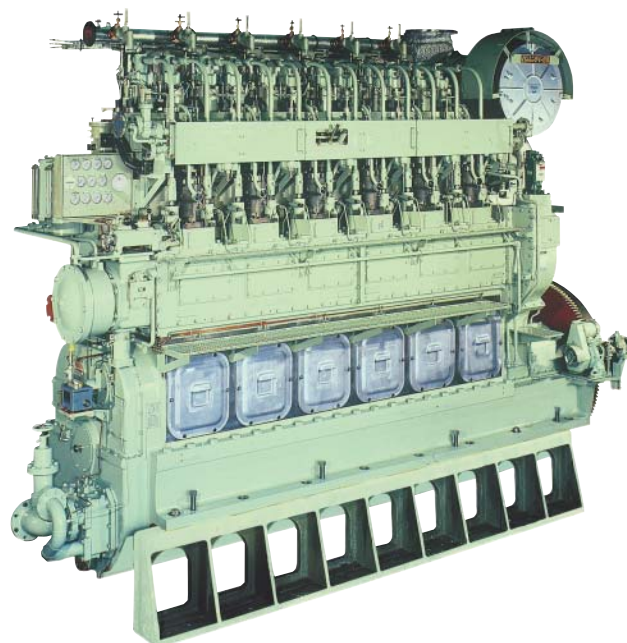
Tel: +81-3-3259-5621, Fax: +81-3-3259-5621

● **Exhibits**

- LA type Main Engine
- Advanced Electronic Control Diesel Engine

● **Features**

- LA type main engine has been designed as long stroke and low speed engine aiming at high cycle efficiency. Low speed engine realizes improved propeller efficiency by adopting large diameter propeller without reduction gearbox.
Furthermore, this engine cuts fuel consumption with low NOx generation considering global environment.





● Outline of Company

Kanagawa Kiki Kogyo Co.,Ltd. was established as a manufacturer of Filters and Strainers for Marine and Land-use Diesel engine in 1951 at Yokohama, Japan.

We had developed epoch-making products, Notch Wire Element, which enhances the function of internal combustion engines.

Since then, the company has steadily expanded into what it is today under the guidance and assistance of various industries such as shipbuilding and marine transport as well as iron and steel milling, petrochemical, textile, electric power, gas and atomic energy, etc. However, it can be said that the company has only marked the first step in this field. While assuring you of many advantage of the modern industries, we will make greater efforts to create unpolluted environments, a better society and development in the industrial world.

● Main Products

- Automatic Backwash type strainer with Notch wire element (applied for HFO ,Lube oil and Sea water)
- Manual backwash type & duplex type strainer with Notch wire element (applied HFO.L.O. and other liquid)
- Cartridge type UNI/FV filter for H.F.O. (against FCC oil)
- JGP filter for Lube oil fine filter
- Gas filter for compressor & blower
- Lube oil & Fuel oil purification system as L-Pux & F-Pux

● Head office

No.8-19-1, Okamura, Isogo-ku, Yokohama,235-0021,Japan
Tel: +81-45-753-3800
Fax: +81-45-755-0089
URL:<http://www.kanagawa-kiki.co.jp>

● Exhibits

K8FE cutaway model

Features of K8FE HFO Auto. Filter

- 10micron fineness can be applied for HFO
- Every classification can be applied
- Duplex auto. filter can be applied
- 700cSt of HFO can be applied
- Over 30m³/h of flow rate can be applied

Features of K8E L.O. Auto. Filter

- Absolute 40 Micron fineness can be applied until 600m³/h as simplex model
- No required electric motor for driving source
- Intermittent backwash and continuous backwash can be selected by client requirement
- Sludge checker would be supplied

● Agent for spare parts

- Roka Tech Corp.
Address: No. 8-19-1,Okamura, Isogo-ku, Yokohama 235-0021 Japan.
Tel: +81-45-761-0356
Fax:+81-45-754-4884
Mail: a.kume@kanagawa-kiki.co.jp



● Outline of Company

Since its establishment in 1878, Kawasaki Heavy Industries, Ltd. has dedicated itself to innovative technological development and has been active in business worldwide.

It has expanded from its origin in shipbuilding to rolling stock, aircraft, machinery, plants and equipment, bridges, motorcycles and more.

Now Kawasaki is engaged in areas such as transportation, the development of energy and of space and environmental protection; projects crucial to the lives and livelihoods of future generations.

Kawasaki is aggressive in its pursuit of technological developments – we are building dreams by staying in front.

● Main Products

- Diesel Engine, Main Steam turbine, Reduction Gear
- C.P. Propeller, Side thruster, Azimuth thruster & Integrated control system
- Main Boiler (Kawasaki Plant Systems, Ltd.)
- Steering gear, Deck machinery and Camera stabilizer on ships (Kawasaki Precision Machinery Ltd.)
- Shipbuilding & Repairing (Kawasaki Shipbuilding Corporation)

● Head Office

World Trade Center Building,
4-1, Hamamatsu-cho 2-chome, Minato-ku, Tokyo 105-6116, Japan
Tel: +81-3-3435-2374 Fax: +81-3-3435-2022
<http://www.khi.co.jp/>

● Liaison Offices

- Kawasaki Heavy Industries (Singapore) Pte. Ltd.
6 Battery Road #18-04 Singapore 049909
Tel: +65-62255/33
Fax: +65-62249029

● Affiliated Companies

- Kawasaki Plant Systems, Ltd.
11-1, Minamisuna, 2-chome, Koto-ku, Tokyo 136-8588, Japan
Tel: +81-3-3615-7013 Fax: +81-3-3615-9665
<http://www.khi.co.jp/kplant>
- Kawasaki Precision Machinery Ltd.
234 Matsumoto, Hasetani-cho, Nishi-ku, Kobe 651-2239, Japan
Tel: +81-78-991-1133 Fax: +81-78-991-3186
<http://www.khi.co.jp/kpm/>
- Kawasaki Shipbuilding Corporation
1-1, Higashikawasaki-cho 3-chome, Chuo-ku, Kobe 650-8670, Japan
Tel: +81-78-682-5501 Fax: +81-78-682-5514
<http://www.kawasakizosen.co.jp>

• Main Steam Turbine



• Main Boiler



• Reduction Gear



• Diesel Engine



• Azimuth thruster



• Side Thruster



• Steering Gear



● **Head Office**

337-8 Takabe, Imabari-City, Ehime, 799-2113, Japan
 Tei: +81-898-41-9217
 Fax: +81-898-41-6568
 E-mail: eigyou_2@manabezoki.co.jp
<http://www.manabezoki.co.jp>
 President: Mitsuo Manabe

● **Main products**

ITEM	TYPE	PARTICULARS
Anchor Windlass	Hydraulic type / Electric type	19.6~828kN x 9~12m/min Chain dia.19~132mm
Mooring Winch	Hydraulic type / Electric type	19.6~300kN x 15~20m/min
Cargo Winch	Hydraulic type	29.4~490kN x 15~20m/min
Deck Crane	Hydraulic type	294~638kN (Single) 294~1275kN (Twin)
Hose Handling Crane	Hydraulic type	98~196kN
Ramp Winch	Hydraulic type	78~343kN
Towing / Anchor Handling Winch	Hydraulic type / Electric type / Engine type	9.8~2940kN Brake Capacity: 294~3920kN



Windlass



Mooring
Winch



Deck Crane



● Outline of Company

NYK Trading Corporation is the comprehensive marine company to provide high-quality service for supplying all sorts of marine equipment, instrumentation and control/monitoring systems, spare parts, and to deal with world wide after-sales service and design/engineering work, especially for marine automation system, including retrofit and replacement. In 2000, NYK Trading Corporation has acquired the certificate of the quality management standard system ISO 9001.

To develop global expansion of business, we have overseas offices in Shanghai, Brussels, Singapore in addition to domestic offices in Tokyo, Kobe, Hiroshima, Moji and Nagasaki.

● Head office

YS Kaigan BLDG. 2-2-6, Kaigan, Minato-Ku, Tokyo 105-0022
Japan
Tel: +81-3-5765-1845
Fax: +81-3-5765-1872
E-mail: ospt@yusenchoji.co.jp
Website: <http://www.yusenchoji.co.jp>



● Exhibits

1. Fire Detecting and Alarm System "AUTRO SAFE" (Autronica Fire and Security AS)
2. Data Logger System (KEI System)
3. Field Instruments & Control Valve Press / Differential Pressure Transmitter, Pneumatic Controller, Control Valve, Digital Controller (Yamatake)
4. Local Power Unit / Electric to Hydraulic Actuator Manual Hydraulic Power Unit (EMERSON)
5. Anti-Splashing Tape "FN-TAPE" (Tokyo Nisshin Jabara)
6. New Air Dryer "MIST-ALL" (Nakamura Industries)
7. F.O.SHIFTER SYSTEM (Hokushin Engineering)
8. Butterfly Valve (TOMOE VALVE)
9. Engine Combustion Monitor, Pressure Transmitter, Pt Resistance Thermo Detector (Meiyo Electric Co., Ltd.)
10. Life Raft (Fujikura Rubber)

● Liaison office and /or agent

HIKAWA-AMCO (SINGAPORE) PTE.LTD.
BLK 192 PANDAN LOOP #04-07, PANTECH INDUSTRIAL
COMPLEX, SINGAPORE 128381
Tel: +65-6774-8550
Fax: +65-6774-8556



● **Outline of company**

Nakashima Propeller is the leading company of marine propulsion specialists in the world. Since founded in 1926, we have continuously been advancing to be the world's only comprehensive designers/manufacturers of marine propulsion equipment applicable to a wide range from smaller-sized pleasure boats and fishing boats up to large-sized merchant vessels including ULCC, mega container vessels, and LNG carriers, by utilizing experiences accumulated.



Fixed Pitch Propeller

● **Main Products**

- Fixed Pitch Propeller
- Controllable Pitch Propeller
- Side Thruster
- Shafting Equipment
- Schottel Pump-Jet
- Becker Rudders

● **Head Office**

688-1, Joto-Kitagata, Okayama 700-8691, Japan
Tel: +81-86-279-5111
Fax: +81-86-279-3107
URL: <http://www.nakashima.co.jp>
E-mail: npcwebmaster@nakashima.co.jp

● **Exhibits & Features**

1. Fixed Pitch Propeller (F.P.P.) & Controllable Pitch Propeller (C.P.P.)

Nakashima Propeller's F.P.P. & C.P.P. with a variety of sizes/models available for a wide range of the applications.

2. Side Thruster

Nakashima Propeller's side thrusters to facilitate the vessels's operation sideways effectively and efficiently near a quay or a dockyard.

● **Liaison office**

NAKASHIMA VIETNAM CO., LTD.
Land Plot N-9, Nomura-Haiphong IZ,
An Duong District, Haiphong City, Vietnam
Tel: +84 31 3743303
Fax: +84 31 3743305
E-mail: nt.binh@nakashimavn.com



● **Outline of Company**

NANIWA PROVIDES WORLD CLASS RELIABILITY AND PERFORMANCE

Naniwa Pump Mfg. Co., Ltd., is a leading Japanese manufacturer of a wide variety of marine and industrial pumps.

Naniwa brand is known Worldwide for its superior quality and performance for all types of Marine Engine Room and Cargo Pumps.

Both the quality and design of Naniwa Pumps meet or exceed the global requirements of classification societies and national standards.

Naniwa Pump is capable of expediting all customers' needs.

● **Main Products**

Pumps and Steam Turbines of all types and related systems and equipment for marine applications:

(1) Engine room pumps:

- Centrifugal pumps
- Piston pumps
- Rotary gear pumps
- Hydrophore tank unit
- Rotary screw pumps
- Central priming unit

(2) Pump room pump package:

- Cargo pumps: Centrifugal type or two-rotor screw type
- Water ballast pumps: Centrifugal type
- Stripping pumps: Steam driven reciprocating type or two-rotor screw type
- Automatic priming, capacity regulating and stripping systems

● **Head Office**

11-5, Shinmachi 3-chome, Nishi-ku,
Osaka 550-0013, Japan
Tel: +81-6-6541-6231 Fax: +81-6-6541-7492
E-mail: kaigai@naniwa-pump.co.jp
Website: www.naniwa-pump.co.jp

● **Exhibits**

- Centrifugal Pump model FEWV-400D



● **Feature**

- Centrifugal Pump model FEWV-400D

Item		
Pump type		Vertical single stage, double suction Centrifugal Pump
Application		Main Cool. S.W. Pump Ballast Pump, etc.
Bore	mm	400/400 (Suc./Dis.)
Capacity	m ³ /h	1,100 ~ 1,500
T. Head	m	20 ~ 30
Speed	rpm	1450/1750
Weight	kg	650

● Outline of Company

Nippon Hakuyo electronics, ltd. (NHE) was founded in 1981 as a company focusing on system engineering and sales of shipboard equipments in OKI group which is the leading company in the field of Information Technology and Network Solution. Since then NHE has been providing not only domestic market but also world market with inter communication, fire detection/alarm equipments and satellite data acquisition/processing system by utilizing OKI group's rich and high level technical resources with additional unique technical expertise and know-how of its own. NHE does not manufacture the equipments. Instead NHE outsources them by teaming up and under the partnership with Shizuoka OKI Electric for inter communication equipments and OKI DENKI BOSAI for marine fire detection/alarm systems and we have achieved solid supply record of these products.

● Main Products

- Marine Intercom Systems
- Public Addressing Systems
- Fire Detection and Alarm Systems
- Marine CRYSTAL clock
- Cargo loading computer system
- CCTV systems

● Head Office

2-40-7, Higashikanagawa, Kanagawaku, Yokohama,
221-0044, Japan
Tel : +81 45 453 6911
Fax: +81 45 453 6910
H.P. : <http://www.nhe.co.jp>
E-mail : nippaku@nhe.co.jp

● Exhibits



● Features

a) Automatic Telephone Exchanger OAE-7100

- Extensions:16~80 Lines
- Trunk lines:0~4 Lines
- Busy Override, Group Paging, Call Pickup, DTMF, Emergency Call, Wireless Connection, Shore Connection

b) Fire Alarm Panel FF-3062

- Number of Line:5/10/15/20/30 Lines
- Available detectors, etc.:
 - Fixed temperature type spot fire detectors
 - Optoelectric smoke detectors
 - Intrinsically safe optoelectric smoke detectors
 - Infrared type flame detectors
 - Manual call points
 - Sub alarm panel

c) Marine Crystal Clock TXS-12S

- Slave clocks:Max. 140 (30 sec/3 wire)
- Slave clocks:Max. 30 (0.5 sec/2 wire)
- GPS Signal Input (NMEA0183)



● Outline of Company

Since 1949, we have devoted ourselves to development of the advanced technologies in the field of Desalination, Heat Transfer, Waste Water Treatment, Pollution Control, Noise Control, that have largely contributed to great progress of various industries and human life.

Now with the best of our abilities, we are challenging to materialize more sophisticated technologies for harmonious progress of the humanbeings and the nature.

● Main Products

- Fresh Water Generator (Plate/Tubular/RO)
- Bilge Separator to meet IMO MEPC.107 (49)
- Sewage Treatment Plant
- Deaerator
- Deoiler
- Cryogenic Butterfly Valve
- Tubular Heat Exchanger
- Noise Control System

● Head Office

7-32, Takejima 4-chome, Nishiyodogawa-ku,
Osaka 555-0011, Japan
Machinery Division
Tel.: +81-6-6473-2134
Fax: +81-6-6473-5540
E-mail: webmaster@sasakura.co.jp
URL: <http://www.sasakura.co.jp>

● Tokyo branch office

10-4, Hatchobori 4-chome, Chuo-ku, Tokyo 104-0032, Japan
Machinery Division
Tel.: +81-3-5566-1212
Fax: +81-3-5566-1233
E-mail: webmaster@sasakura.co.jp
URL: <http://www.sasakura.co.jp>

Tubula Type Fresh Water Generator

Features

- High purity distillate
- Simple operation
- Scale-free performance



Plate Type Fresh Water Generator

Features

- Minimized installation space
- Much easier maintenance work
- Simple, steady and reliable operation



Bilge Separator to meet IMO MEPC.107 (49)

Features

- Superior separating efficiency
- Long-term continuous operation
- Easy maintenance
- Easy installation



● Outline of Company

Since starting operation as YAMADA SANRITSU COMPANY in February 1917, TAIYO ELECTRIC CO., LTD., was formed in December 1943 through the merger of three companies. Subsequently, We have been engaged in the manufacture of electric equipment for general ships, and fishing boats in particular. Taiyo Electric Co., separated its electric marine equipment division, thereby establishing SANSBIN ELECTRIC CORPORATION.

We are meeting customer needs for a variety of products ranging from large-sized marine equipment to pleasure boat articles through our domestic and overseas sales networks.

● Main products of Sanshin Electric Corporation

- Searchlights/Flood Lights
- Legal Marine Electric Apparatus
- Lighting Fixtures
- Signal and Alarm Equipments/Wiring Fittings
- Marine Equipments and Fish Collecting Lights
- Marine Parts/Security and Guard Apparatus

● Head office

Sanritsusha Bldg., 16-8, 1-chome, Uchikanda, Chiyoda-ku,
Tokyo, Japan 101-0047
Sanshin Electric Corporation
Tel : +81-3-3295-1831 Fax : +81-3-5259-8043
URL : <http://www.sanshin-electric.co.jp>

● Liaison office and/or Agent

KANEMATSU CORPORATION
R/No.1205-1206, 12F Daeha Business Centre
360 Kim Ma St., Ba Dinh Dist.,
Hanoi S.R. Vietnam
Tel : +84-4-7715642 Fax : +84-4-7715641

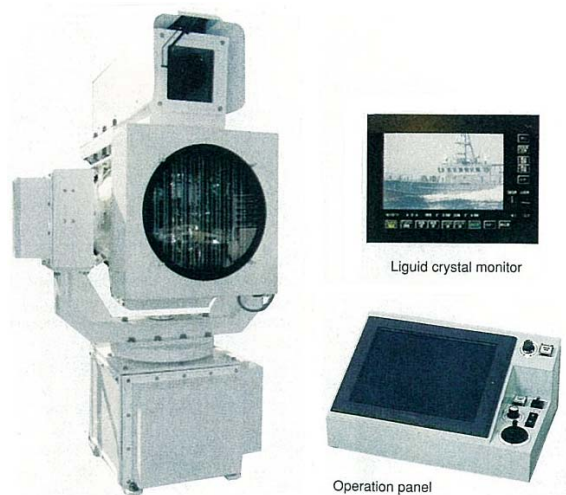
2-Axis Stabilizing Searchlight

With Onboard Monitoring Camera System PSX-3016H23W-FV

Excellent Monitoring Properties : On an automatic changeover system, the daytime situation is monitored using color images, and the night time situation is monitored using black-and-white images. In particular, a high sensitivity dark camera is mounted for night time monitoring/control.

Due to the adoption of a 33times optical zoom lens, it is also possible to take clear photos of a faraway object without being noticed by the target.

Continually Securing Stabilized Light/Visual Axes : The system has a searchlight and a camera installed on a motion-stabilized control stand(1 or 2-axis types) to prevent the shaking of the light axis of the xenon searchlight or the visual axis of the dark camera because of rolling or pitching of the ship. On the strength of this arrangement, a continually stabilized light axis and visual axis can be secured even in seas with high waves.



Liquid crystal monitor

Operation panel



● **Outline of company**

Since the foundation in 1938, we have been extremely successful as specialist in the field of pump and turbine manufacturer for marine use.

In order to respond the needs of industry, we have been developing various new products such as cargo oil pump and turbine for tanker, LPG, LNG pump, energy saving generator turbine, and biomass generator turbine, etc. by our own technology.

At the same time, research & development facility is provided to improve the quality and to maintain the integrated manufacturing system of design - foundry - machining - assembling - shop testing.

● **Main Products**

- Various engine room pumps for marine use
- Cargo unloading system for tanker
- LPG, LNG pump
- Steam turbine for driving machinery (pump, compressor)
- Steam turbine for energy saving
- Steam turbine for biomass (bagasse, garbage)

● **Head Office**

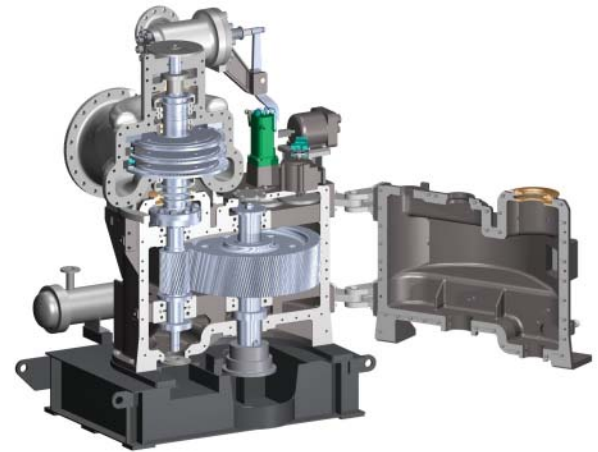
5-7-21, Ohzu, Minami-ku, Hiroshima
732-0802, Japan
Tel : +81-82-508-1000 Fax : +81-82-508-1020
<http://www.shinkohir.co.jp/>

● **Exhibits**

- Development of high efficiency COPT (Cargo Oil Pump Turbine)
- Combined Turbo Generator
- Cargo Oil Pump & Turbine Plant (Marine)
- Engine Room Pump

● **Features**

- Development of high efficiency COPT
- By improving efficiency for 13%, boiler fuel consumption is reduced and promotes the total reduction of running cost.
 - Contribute to reduce the CO2 emission.
 - Boiler & condenser shall be downsized and initial cost increase can be depreciated within approx. 30 times of unloading.



● **Liaison office and/or agent**

SHINKO IND.LTD. Singapore Representative Office
24 Chia Ping Road, SINGAPORE 619976
Tel : +65-6265-1089 Fax : +65-6264-3927
E-mail : sin@shinkohir.co.jp

● **Outline of company**

TAIKO, as a general manufacture of pumps and environment equipments, has produced various kinds of marine pumps, bilge separator, sewage treatment device and the cargo pump system for tankers. We continue to contribute the modernization of marine industry under motto of "Clean the sea and friendly to the earth".

● **Maine products**

- Gear pump
- Screw pump
- Centrifugal pump
- Sewage Treatment Device
- Oily Water Separator
- Piston pump
- Rotary blower
- Vacuum pump

● **Head office**

Oversea Business Sect.
209-1 Shimotabuse, Tabuse-cho, Kumage-gun,
Yamaguchi 742-1598, JAPAN
Tel:81-820-52-3113 Fax: 81-820-53-1001
E-mail: business@taiko-kk.com

● **Exhibits**

Panel display of all pump line up, certificates, and service network.

● **Features**

E/R Centrifugal Pump: TAIKO has amassed a vast reservoir of technical know-how and expertise.

E/R Gear Pump: The gear is characterized by its innovative one-point continuous contact, introduced to the market by Japan for the first time.

E/R Screw pump: The acquisition of new knowledge and new technology has enable TAIKO to develop a series of Screw Pumps consisting of one-rotor, two-rotor, and three-rotor.

● **Agent in Viet Nam: P&P Korea Co., Ltd**

Hanoi Branch:

Room 11.8, floor 11th, VIMECO Building, Pham Hung Str.,
Cau Giay Dist., Hanoi
Tel: 0915 900 339

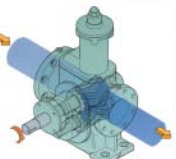
Hai Phong Branch:

Unit 1+2, Floor 3rd, Thanh Dat Building, No.3 Le Thanh Str.,
Ngo Quyen District, Haiphong
Tel: 031 3686 718

Nha Trang Branch:

40 Le Hong Phong Street, Nha Trang City, Khanh Hoa
Province
Tel: 058 872 132


GEAR PUMP



■Range of Supply
Capacity : 0.1-100 (m³/h)
Pressure : -0.45 (MPa)
Flow Rate : 10-1000 (mm)

■Operating Principle and Feature
The Gear Pump is used to transfer low and high viscosity liquid. It continuously transfers liquid by encircling them in the space between the gear's root circle and casing. This liquid slowly travels to the discharge side while rotating clockwise to the other gear from the drive gear.
We were the first to develop the Sumpless Gear Pump in the World Market. This pump has several special features: (1) one point contact gear, (2) there is no axial space between the teeth, (3) helical teeth structure for quiet operation, (4) continuous discharge without vibration, (4) excellent handling high viscosity liquid and (5) long-term high performance.

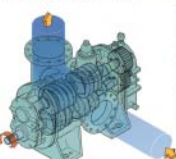
CENTRIFUGAL PUMP



■Range of Supply
Capacity : 1-400 (m³/h)
Pressure : -0.8 (MPa)
Flow Rate : 10-1000 (mm)

■Operating Principle and Feature
The Centrifugal Pump is used to transfer the sea water, fresh water and high water. In the impeller turns inside the casing, the liquid particles flow into the impeller and is flung out by centrifugal force along the inner circumference to the shell by the action of the opening impeller. The centrifugal force is converted to the hydraulic pressure inside the impeller casing to transfer the water.
We are developing a series of centrifugal pumps under our original concept to standardize the main pump parts based on the ISO 2068-01/3 (3.5 Single Suction Centrifugal Pump).

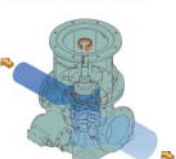
TWO SCREW PUMP



■Range of Supply
Capacity : 2-100 (m³/h)
Pressure : -0.33 (MPa)
Flow Rate : 10-1000 (mm)

■Operating Principle and Feature
The Two Screw Pump is used to transfer low and high viscosity liquid. It continuously transfers liquid by encircling it between the screws and casing. This liquid continuously moves along the crests in the space through the casing gears. There is no normal contact of pump components. Because of the clearance between the screws and the casing, this pump is especially suited for transferring viscous liquids.

THREE SCREW PUMP



■Range of Supply
Capacity : 0.1-100 (m³/h)
Pressure : -0.7 (MPa)
Flow Rate : 10-1000 (mm)

■Operating Principle and Feature
The Three Screw Pump is used in many applications to transfer low and high viscosity liquid. It continuously transfers liquid by encircling it between the power and idler screws and the crown. The continuous velocity of the liquid moves in spaces to the power rotor which induces rotation in the idler rotors by hydrodynamically balanced pressure.
Special attention was given to the rotor design. The idler rotor's groove edge became sharp due to the design profile. We measured the radius of the groove edge and made an offset correction of the measured radius in the power rotor. This adjustment provides very efficient liquid flow efficiency. Also, this modification has been patented by the Company.

COMPREHENSIVE SUPPLIER OF ELECTRIC EQUIPMENT & MACHINERY FOR MARINE USE**● Outline of company**

Company origin has been established in 1917, & Taiyo Electric Group has continued growing up as a specialist & total supplier of electric machinery in the marine market, to cover comprehensive system products, such as Electric Propulsion System, Shaft Generating System, in addition to Generators, Main Switchboard, Alarm Monitoring System, Frequency Control Panel, Motors, etc..

● Main Products of Taiyo Electric Co.,Ltd.

- All kinds of Generators & Induction Motors
- Low & Medium Voltage Switchboards / Starters
- All kinds of Ventilation Fans
- Main Engine Alarm & Monitoring System
- Inverter Speed Control System
- Thyristor Control Shaft Generating System
- Electric Propulsion System

● Head Office

Sanritsusha Bldg., 16-8, 1-chome, Uchikanda,
Chiyoda-Ku, Tokyo, 101-0047, Japan
Tel: +81-3-3293-3067 Fax: +81-3-3292-7012
E-mail: e-mail@taiyo-electric.co.jp
URL: <http://www.taiyo-electric.co.jp>

● Exhibits

Alarm & Monitoring System "TMC-M2K"



System Status Monitoring Mimic Screen from "TMC-M2K" display.

**● Features of Alarm Monitoring System "TMC-M2K"**

1. All in One Unit: The new concept of "All in One Unit" that unified LCD monitor and main computer.
2. Failure Diagnosis: Provide system status monitoring screen as standard, which helps easy diagnosis at system failure.
3. LonWorks: Adopted LonWorks® for the Local Unit and Extension Alarm network, to realize high reliability data communication.
4. Simple Display: Easy to watch the machinery condition by simple display.

● Liaison office and/or agent

KANEMATSU CORPORATION
12 FL DAEHA BUSINESS CENTRE 360 KIM MASTR,
HANOI, S.R. VIETNAM
Tel: +84-4-7715-642~7 Fax: +84-4-7715-641/648

● Outline of Company

We TOKIMEC INC.(formerly known as TOKYO KEIKI CO.,LTD.) were established in 1896 as Japan's first measuring instrument manufacturing plant, and later expanded by producing successful products in the marine, measurement, hydraulic and defense markets.

● Main products

- Gyro compass
- Autopilot
- Magnetic compass
- Doppler speed log
- Marine Radars & ARPA
- Automatic Identification System
- ECDIS
- Inmarsat F
- GMDSS Radio Communications Equipment

● Head Office

16 46 Minami Kamata, 2 chome
Ohta-ku Tokyo 144-8551 Japan
Tel:+81 3 3737 8631
Fax:+81 3 3737 8666
<http://www.tokimec.co.jp>



● Exhibits and Features

Gyro compass Model TG-8000

- designed for IMO regulated vessels
- fast serial data outputs(IEC61162)
- minimum system components for dual gyro system for saving space & installation costs



TG-8000 dual gyro system

Auto pilot Model PR-6000A series

- approved by the authorities as a Heading Control System
- every ADAPTIVE(single or dual) control is supplied with PID single control as standard
- possible to arrange as the steering system configuration of INS



PR-6000 steering stand

Radars & ARPA Model BR-3440CA series

- newly developed Dangerous Area of Collision (DAC) display provides easy confirmation of the safe course
- possible to display AIS information

ECDIS Model EC-7500 (23inch LCD) / EC-7000 (19inch LCD)

- meets the latest requirement of IMO/IEC and is approved by the authorities(DNV)
- user friendly graphical interface for easy operation
- possible to display AIS information, radar image and RP targets
- Track Control System(TCS) and Displayed by interface with Heading Control System



ECDIS display stand

● **Outline of Company**

TSUJI HEAVY INDUSTRIES, founded in 1939, is the leading manufacturer of marine cargo handling equipment such as onboard deck cranes and hatch covers, which combine reliability and efficiency with economic pricing.

The company operates three large factories - one Japan and two in China.

At the Chinese facilities, in addition to the manufacturing of cranes and hatch covers, the company is building complete handysize bulk carriers.

● **Main Products**

All types of Deck Crane, Hatch Cover, Gantry Crane, Unloader System, Ro-Ro System.

● **Head Office**

177-2, Hikari-machi, Sasebo, Nagasaki 858-8501, Japan
Tel: +81-956-47-3113
Fax: +81-956-47-5700
E-mail: main.office@tsuji-hi.com
URL: www.tsuji-hi.com

● **Exhibits**

30,000dwt "Trader" handysize bulk carrier

● **Features**

Double hull, latest IACS-CSR/IMO regulations.





● Outline of Company

The sea is a huge benefactor of mankind And its protection is ensured in our hands.

Based on this motto, Kashiwa Co., Ltd. has been specializing in manufacture / supply of total marine hazard prevention systems since its foundation in 1947.

● Main Products

- Low Expansion Foam System
- High Expansion Foam System
- External Fire Fighting System
- Inert Gas System & Inert Gas Generator
- Nitrogen Generator System
- Hyper-Mist Local Fire Fighting System

● Head Office

4-5-4, Takanawa, Minato-ku, Tokyo
 108-0074 Japan
 Tel: +81-3-5449-2431 Fax: +81-3-5449-2430
 E-mail : sales@kashiwa-tech.co.jp

● Engineering Office

1165-9, Kutsukake, Bando-shi, Ibaraki
 306-0515 Japan
 Tel: +81-297-44-3781 Fax: +81-297-44-3788



Foam Monitor



IGS Blowers



Hi-Ex Foam Generator



Nitrogen Generator

● Outline of Company

Mitsubishi Kakoki Kaisha, Ltd. (MKK) was established in 1935 financed by several companies in the Mitsubishi Group for the purpose of promoting the production of chemical machinery and equipment in Japan.

Mitsubishi oil purifier, sludge separator and filters have been contributing to the considerable saving in maintenance and operation labor for the ship.

● Main Products

- Oil purifier
- Sludge separator
- Oil filter (Mitsubishi MK filter)



● Head Office

2-1, Miyamae-cho, Kawasaki-ku, Kawasaki 210-0012, Japan
 Machinery Sales Dept.
 Tel: +81-44-246-7350
 Fax:+81-44-246-7352
 E-mail: mkkkikai@kakoki.co.jp
 URL: <http://www.kakoki.co.jp>



● **Outline of Company**

Tanabe Pneumatic Machinery Co., Ltd was founded by Shozo Tanabe as a manufacture of Compressors in 1921.

Now, Tanabe specializes in wide range of marine field and in industrial market for high pressure use, namely, steel work, CNG station, PET molding and so on.

Tanabe marine compressors have about over 70% shares of Japanese marine market.

● **Main Products (Marine use)**

Marine Compressors <reciprocating and rotary screw type>

- Starting Air Compressors
- Control Air Compressors
- Ship Service Air Compressors
- LPG Compressor
- Breathing Air Compressor

● **Head Office**

2-14-6 Senrioka, Settsu, Osaka 566-0001, Japan
Tel + 81-6-6388-1337
Fax +81-6-6388-4400
URL: www.tanacomp.co.jp
e-mail: info@tanacomp.co.jp

● **Sole Agent for Export**

Tanabe Compressor Co., Ltd.
15-24, Naganohigashi, Suita, Osaka 565-0816, Japan
Tel + 81-6-6878-4446
Fax +81-6-6875-2620
e-mail: info@tanabe-comp.co.jp

● **Singapore office**

Tanabe Compressors Pte Ltd
2 Jurong East Street 21
IMM Building, #04-30
Singapore 609601
Tel +65-6562-6800
Fax +65-6562-6811
e-mail: sales@tancomp.co.jp

● **Head Office**

Japan Marine Equipment Association

6th Floor, Kaiyo Senpaku Building,
15-16, Toranomon 1-chome, Minato-ku, Tokyo 105-0001,
Japan

Tel: +81-3-3502-2041
Fax: +81-3-3591-2206
E-mail: info@jsmea.or.jp
URL: <http://www.jsmea.or.jp>

● **Overseas Offices**

• **Shanghai**

JETRO Shanghai, Ship Machinery Department
21st Floor, Shanghai International Trade Centre,
2201, Yan An Xi Road, Shanghai 200336, P.R.C.

Tel: +86-21-6270-0489
Fax: +86-21-6270-0499

• **London**

Japan Ship Centre (JETRO), Ship Machinery Department
2nd Floor, 6 Lloyd's Avenue, London EC3N 3AX UK

Tel: +44-20-7680-9456
Fax: +44-20-7680-9416
E-mail: info@jsc.org.uk
URL: <http://www.jsc.org.uk>

• **Singapore**

JETRO Singapore, Ship Machinery Division
Hong Leong Building, #38-01 to 05 #37-02A
16 Raffles Quay, SINGAPORE 048581

Tel: +65-6429-9522
Fax: +65-6224-1169