

JSMEA

Japan Marine Equipment Association

NORSHIPPING

OSLO
JUNE
09-12

20
09



*This article is published under a grant from
The Nippon Foundation.*

EXHIBITORS

Daihatsu Diesel MFG. Co., Ltd. ······6

Fuji Trading Co., Ltd. ······8

Heishin Pump Works Co., Ltd. ······10

Manabe Zoki Co., Ltd. ······12

Musasino Co., Ltd. ······14

Nabtesco Corporation ······16

Sasebo Heavy Industries Co., Ltd. ····18

Taiyo Electric Group ······20

Yanmar Co., Ltd. ······22

Taiko Kikai Industriesr Co., Ltd. ······24

Nor-Shipping 2009

STAND NO. B02-06

Daihatsu Diesel MFG. Co., Ltd. **E**

Fuji Trading Co., Ltd. **J**

Heishin Pump Works Co., Ltd. **G**

Manabe Zoki Co., Ltd. **I**

Musasino Co., Ltd. **A**

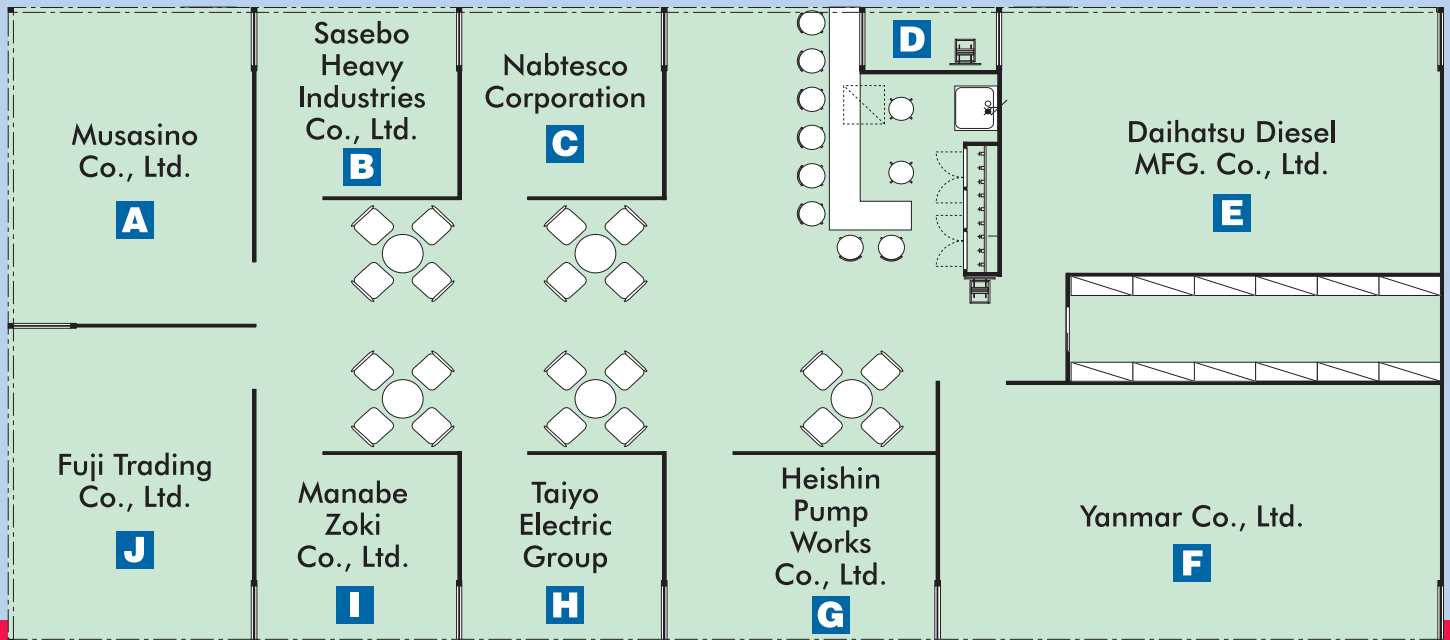
Nabtesco Corporation **C**

Sasebo Heavy Industries Co., Ltd. **B**

Taiyo Electric Group **H**

Yanmar Co., Ltd. **F**

Taiko Kikai Industries Co., Ltd. **D**
(Panel Exhibitor)



● Outline of Company

Since its establishment in 1907, Daihatsu Diesel Mfg. Co., Ltd. has pioneered the ages and has maintained a first rate position in the Diesel engine business. Our Diesel engines in the 50 to 7000kW range has been very popular in both the overseas and home markets, confirming Daihatsu Diesel as the leading company in this field. We believe our reputation is the result of our dedicated and consistent efforts to provide reliable products, and that it is our duty as an enterprise to uphold the Daihatsu principles and corporate attitude. Our constant efforts to achieve the highest quality can be seen in the industry-leading quality assurance systems of Daihatsu Diesel's Headquarter and Moriama Plants, which has been certified by Lloyd's Register Quality Assurance Ltd. as satisfying the requirements of ISO9001.

Daihatsu Diesel, targeting the global market, will continue fostering a progressive business culture. Furthermore, we are fully determined to fulfill the trust and expectations of our valued customers, and to contribute to the society through technological innovations with emphasis on environmental consciousness and quality.

● Main Products

Marine Propulsion and Auxiliary Diesel Engines

● Tokyo Office

2-10, Nihonbashi-honcho 2-chome, Chuo-ku,
Tokyo 103-0023, Japan
Tel: +81-3-3279-0827 Fax: +81-3-3245-0395
<http://www.dhtd.co.jp>

● Liaison Offices

• Daihatsu Diesel (Europe) Limited
5th Floor, Devon House, 58-60 St. Katharine's Way,
London E1W 1LB, U.K.
Tel: +44-20-7977-0280 Fax: +44-20-7702-4325
E-mail: daihatsu@ddeuk.com

Features of New Model Engine

Developed as a large DC series engine, the DC-32 is reliable and strong, incorporating experiences gained in developing the DK engine, and is based on the DC series development concept.

The compression ratio is the highest of any engine in this class, and the piston combustion chamber is shaped optimally for heavy fuel oil combustion, using a highly efficient supercharger. These features ensure stable low-load combustion of heavy fuel oil.

Incorporating an optimal intake port shape, a fuel

injection pump with high injection pressure, and a noncooled fuel nozzle, Daihatsu has achieved low fuel consumption by matching these features to the most suitable conditions. The DC-32 meets increasingly strict environmental regulations by using a shape enabling clean combustion based on an analysis of the combustion chamber.

Taking into operability in projected maintenance, this engine enables the power unit — cylinder head, cylinder liner, piston, and connecting rod — to be opened from the engine by one operation.

Electronic Engine Control

To make engine handling easier and reduce exhaust emission performance, Daihatsu introduces control devices such as electronic monitoring in the engine, an electronic governor, and electronic fuel oil injection device.

Low Marine Auxiliary Engine Load

Using 2 fresh-water cooling systems — a cooler and a jacket for engine cooling — Daihatsu has kept jacket cooling water at a constant high temperature. For the air cooler, Daihatsu uses 2-stage cooling in which high-temperature jacket-cooling fresh water and low-temperature fresh water of the cooler system flow. Air is heated automatically to ensure stable heavy oil combustion at a low load.

Reliability, Durability, and Component Function

Daihatsu has reviewed the cooling water system, channel configuration, and engine lubrication, and have arranged the pump, cooler, and other auxiliary machinery in front of the engine to guard against component malfunction. The DC-32 is simple and excellent in handling thanks to the significantly reduced number of piping and components. Advanced structural analysis has been introduced via new software for major operating sections and components. Daihatsu plans to confirm quality through continuous engine endurance operation.





● Outline of Company

Fuji Trading Co., Ltd. was established as a marine supplier in 1953 in Kobe, Japan. Over 55 years since then, the company has expanded and diversified into a supplier of technology, offshore drilling equipment and machinery as well as a developer of new markets and business opportunities.

Our job is to make procurement, transportation, and customs clearance of the required goods for our customers who travel around a unique market of "Marine" on a global scale by ship. We supply their requirements safely and accurately at main ports in the world within a limited time.

Through the above business, we contribute to the world trade by supporting smooth and economical ship's operation. In order to execute our task, we give the highest priority to the partnership with our customers, business acquaintances and makers. We are now upgrading and integrating our three functions, that is; information, procurement and physical distribution.

We have been rendering quality services of ship's stores, provisions, machinery, spare parts, engineering and so on. With the international network through the main depots and offices at Kobe, Yokohama, Tokyo, Rotterdam, London, Dubai, Singapore, Hong Kong, Shanghai, Pusan, and Baltimore, we are ready to provide the professional services at any time and place.

URL: <http://www.fujitrading.co.jp/>

TAKASHINA LIFE PRESERVERS CO., LTD.

Takashina Life Preservers Co., Ltd. was established in 1935 in Osaka, Japan. We manufacture products to protect our water environment & safety of those who work or recreate on water. Key products include life jackets, life buoys, immersion suits, dry suits, foul weather gear, and other marine accessories. It is our goal to satisfy our customers with a blend of quality, performance, and cost.

URL: <http://www.jsmea.or.jp/kaiin/takashina/>

● Offices in Japan

- **Kobe Office**
Tel: +81-78-413-2601 Fax: +81-78-413-1386
e-mail: mhq@fujitrading.co.jp
- **Yokohama Office**
Tel: +81-45-622-5661 Fax: +81-45-629-1007
e-mail: supplyyh@fujitrading.co.jp
- **Tokyo Office**
Tel: +81-3-5783-7390 Fax: +81-3-3450-7100
e-mail: tokyo@fujitrading.co.jp

● Group Companies in Japan

- **Fuji Transport Systems Co., Ltd.**
Tel: +81-78-411-2633 Fax: +81-78-411-3178
e-mail: fttr@fujitransport.co.jp
- **Yokohama Tsusho Co., Ltd.**
Tel: +81-45-621-8588 Fax: +81-45-621-8662
e-mail: info@yokotsu.co.jp

● Overseas Group Companies

- **Europe**
Fuji Trading (Marine) B.V., Rotterdam
Tel: +31-10-429-8833 Fax: +31-10-429-5227
e-mail: info@fujitrading.nl
Fuji Trading London Office
Tel: +44-20-7236-0507 Fax: +44-20-7236-0521
e-mail: mail@fujitrading.co.uk
- **Middle East**
Middle East-Fuji (L.L.C.)
Tel: +971-4-347-4444 Fax: +971-4-347-2771
e-mail: info@mef.ae
- **Asia**
Fuji Trading (Singapore) Pte. Ltd.
Tel: +65-6264-1755 Fax: +65-6265-0443
e-mail: info@fujifts.com
Fuji Trading (Marine) Co., Ltd., Hong Kong
Tel: +852-2529-9177 Fax: +852-2865-6175
e-mail: info@fujitradinghk.com
Hanil-Fuji (Korea) Co., Ltd.
Tel: +82-51-712-8300, 8400 Fax: +82-51-631-7735
e-mail: shipstore@hanilss.com / spare@hanilss.com
Fuji Trading (Shanghai) Co., Ltd.
Tel: +86-21-6853-8813 Fax: +86-21-5821-1257
e-mail: ftzstores@fujitrading.net / ftzrepair@fujitrading.net
- **U.S.A.**
Fuji Trading (America) Inc.
Tel: +1-410-238-7985 Fax: +1-410-238-7989
e-mail: sales@fujitrading.us

● Exhibits

1. *Information related soft and hardware*
2. *Procurement related soft and hardware*
3. *Distribution related soft and hardware*

With the above three main themes, we have exhibited what Fuji can provide for our customers now.

- Global Technical Network Service
- "FINE (Fuji Information Net) system - 24-hour information service of your spare parts status
- IMPA Marine Stores Guide
- Immersion Suit, Fire Fighting Suit, Life Jacket of Takashina Life Preservers make as safety package
- FN Tapes



● **Outline of Company**

Heishin Pump Works Co., Ltd., is the oldest Japanese manufacturer of various kind of marine pumps, and Bilge Separator.

We have a firm policy that we should provide products which contribute to the protection of world ecology, for example the Bilge Separator.

● **Main Products**

- Centrifugal pump
- Gear pump
- Piston pump
- Screw pump
- 15ppm Bilge Separator (Oily Water Separator)
- ODM (Oil Discharge Monitoring Control System)

● **Head Office**

1-5-30, Furuta, Harima-cho, Kako-gun, Hyogo Pref.,
675-0146 Japan
Tel : +81-79-436-3001
Fax : +81-79-436-3015
E-mail : kaigai@hsn-kikai.com

● **Exhibits**

15ppm Bilge Separator / HFM type

● **Features**

- Easy Maintenance / Easy Cleaning
- Easy Installation & Piping
- World Smallest size

● **Process**

- First stage : Multi-parallel plate
- Second stage : Emulsion breaker
- Third stage : Coalescer
- Fourth stage : Fine coalescer

● **Approved by**

- JG/MED/USCG





● Outline of company

MANABE has the history of more than 50 years since established as an integrated expert maker of marine deck machinery and cargo system.

We respond to various needs with quick delivery and low costs by progress the original standardization.

We endeavor to improve our quality, performance and after-sales service, and develop products that customer's need with our experiences and techniques.

● Main products

- Deck Machinery
(Hydraulic Type and Electric Type)
Windlass: Chain dia. $\varnothing 19\sim 132\text{mm}$
Mooring Winch: $19.6\sim 315\text{kN} \times 15\sim 20\text{m/min}$
Anchor Han. / Towing Winch: $294\sim 3920\text{kN}$ (Brake)
- Deck Crane
(Electro-Hydraulic Type) and
(Electro-Hydraulic with Inverter Type) EHI Crane
Single Crane: $294\sim 638\text{kN}$
Twin Crane: $491\sim 1275\text{kN}$
- Hose Handling Crane
(Hydraulic Type): $98\sim 196\text{kN}$

● Head office

337-8 Takabe, Imabari, Ehime, 799-2113 Japan
TEL: +81-898-41-9217 FAX: +81-898-41-6568
E-mail: eigyou_2@manabezoki.co.jp
Home Page: <http://www.manabezoki.co.jp>

● Exhibits & Features



Twin Crane

Type: MDW-13026T

Hoisting Load:

1275 (637.5 x 2) kN

Slewing Radius:

Max. 26M, Min. 4M

Anchor Handling / Towing Winch

Type: 2 Drums Water-Fall

Winding Load: $2940/1274/813/59\text{ kN}$

Winding Speed: $7.5 / 10 / 30\text{ m/min}$

Brake Capacity: 3920 kN (at first layer)

Wire Winding Capacity: $\varnothing 72 \times 2000\text{ m}$





Capitalizing on the 50-plus years of experience Musasino has in the maritime industry, we develop complete tank monitoring and control solutions. Building on our beginnings as a maker of tank level gauges, we have developed a range of solutions to meet the needs of ship owners and operators around the world. All of our equipment and solutions are designed to assist crews in efficient cargo handling and safe operation of vessels.

● Main Products

Cargo handling support systems: Our systems are designed with the aim of efficiently applying equipment and crew to the safe and efficient loading and unloading of cargo. Each system utilizes a range of our tank level gauging and alarm equipment, network infrastructure and software best suited to a particular ship and its cargo.

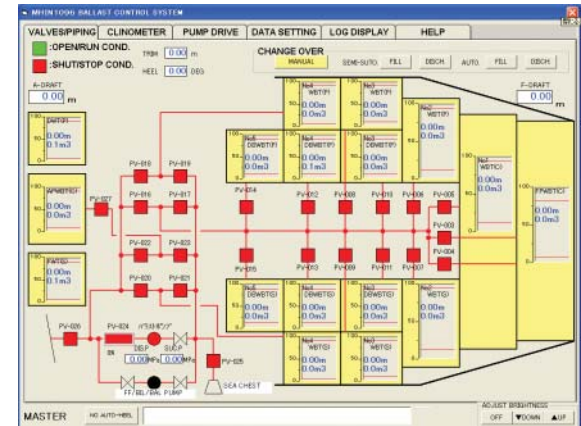
Ballast control systems: Integrated with cargo handling support, the ballast control system responds to changes in a ship's posture during loading and unloading to stabilize the ship.

Level Ace Series: The backbone of our systems, the Level Ace Series of gauges has been designed to be reliable, efficient and environmentally friendly.

LEA150FP



Total tank monitoring and control system



● Features:

- Large liquid crystal panel display
- Tank level, temperature, pressure sensing
- Cargo and ballast valve control
- Automatic adjustment of heel/trim

● Head Office

1-2-15 Minamiyukigaya, Ohta-ku, Tokyo, Japan
Tel:+81-3-3726-4413 Fax:+81-3-3726-1557

● Europe Office

2nd Fl. Unit2, Prof. J.H.Bavincklaan 5, 1183AT, Amstelveen, the Netherlands
Tel:+31-20-5453330 Fax:+31-20-5453331

● European Agents

Fuji Trading/ Beukers Marine/ Taknas Marine
Full contact information for all of our offices and agents worldwide is available on our website.

www.musasino.co.jp

NABTESCO Corporation has been the world's leading manufacturer of motion control systems for Air, Land and Marine field applications.

NABTESCO Corporation has played a leading role in the total control system in marine field, especially M-800 series main engine remote control system and MG-800 digital governor system has enjoyed a good reputation among customers the world over.

● Main Products

- Main Engine (diesel or turbine) remote control system
- CPP, Side thruster, Steerable thruster and Water-jet remote control system
- Digital governor system
- Engine telegraph system and Telegraph logger, Revolution indicating system
- Main engine monitoring system
- Adsorption type air dryer unit for marine

● Head Office

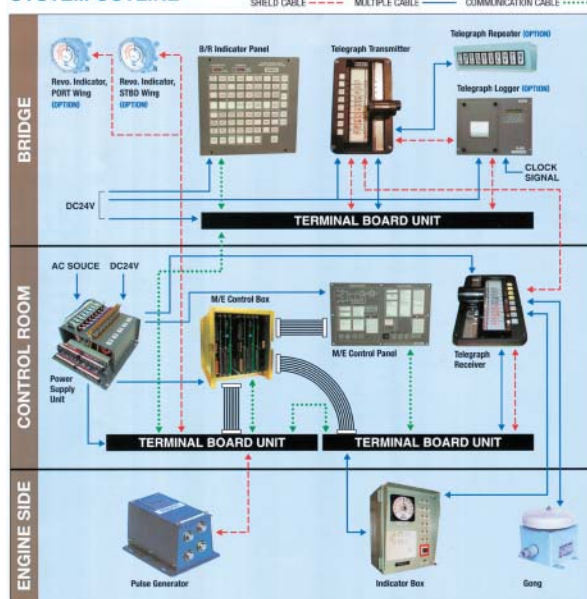
Kokusai Hamamatsucho Building, 9-18, Kaigan 1-chome, Minato-ku, Tokyo 105-0022, Japan
 Tel: +81-3-5470-2413 Fax: +81-3-5470-2417
 E-mail: marine-overseas@nabtesco.com

● Legitimate Companies

- NABMIC B.V.
 Tel: +31-180-530-590 Fax: +31-180-530-591
 E-mail: nabmic@nabmic.nl
- NABTESCO Marine Service Singapore Pte. Ltd.
 Tel: +65-6225-6559 Fax: +65-6225-7393
- NABTESCO Marinotec Co., Ltd.
 Tel: +82-51-464-9380 Fax: +82-51-464-8250
- NABTESCO Marine Control Systems (Shanghai) Co., Ltd.
 Tel: +86-21-5852-0363 Fax: +86-21-5852-0348

M-800-III Series Bridge Maneuvering system

SYSTEM OUTLINE



● Features

- Highly visible and functional arrangement of indicator lamps and switches for easy and accurate operation
 - Flexible pattern of indicator and alarm by microcomputer
 - Data communication with easy expansion by LAN based on CAN
 - Output signal for Voyage Data Recorder as standard
 - Shorten wiring time by flat cables
 - Less wiring due to serial communication
- Even one line has a trouble, communication is possible by using remained two lines

● Panel Exhibits

Introduction of following items:

- M-800-III Series Bridge Maneuvering System & MG-800 Digital Governor System
- Worldwide network services

● **Outline of company**

Sasebo Heavy Industries Co., Ltd. had its origin as one of the Japanese Navy dockyards, and **Sasebo Senpaku Kogyo** (Sasebo Ship Industries Co., Ltd.), began as a commercial shipyard in 1946. Later, in 1961, the company's name was changed to Sasebo Heavy Industries, while the acronym S.S.K. remained.

Bulk carriers and oil tankers constructed by S.S.K. have earned a high reputation for their strength and long life from shipowners all over the world.

At the same time, Sasebo Heavy Industries is well known as a manufacturer of crankshafts for marine diesel engines and of fin stabilizers for container carriers, passenger ships, etc.

● **Main products**

Crankshafts, Intermediate shafts, Propeller shafts, Rudder stocks, Rudders, GYROFIN Stabilizers, Cargo deck tanks, LPG tanks, etc.

● **Head office**

17F Hamacho Center Building, 31-1,
Nihonbashihamacho 2-chome, Chuo-ku, Tokyo,
103-0007, Japan
Tel : +81-3-6861-7318 Fax : +81-3-6861-7358
E-mail : tokyo-kikai@ssk-sasebo.co.jp

● **Exhibits**

- Marine Propulsion Shaft System for Sasebo Panamax Bulker
- Stable Voyage System with GYROFIN Stabilizer

● **Features**

• **Marine Propulsion Shaft System for Sasebo Panamax Bulker**

The model of the system demonstrates the movements of crankshaft, intermediate shaft and propeller shaft. Inside an engine, the combustion force moves the piston down and the inertia force move the piston up. The upward and downward movements of pistons are

converted to the rotational movements. Then, the propeller can rotate.

Displacement type internal combustion engines give one of the highest thermal efficiencies among the thermal engines by means of the crank mechanism.

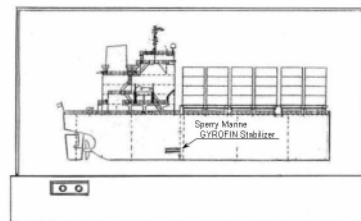


• **Stable Voyage System with GYROFIN Stabilizer**

The model of the system demonstrates the movements of rudder stock, rudder and fins of Sperry Marine GYROFIN Stabilizer with inclination of ship itself.

The rudder turns to left or right through the rudder stock, which causes the ship to be inclined accordingly. Then, the fin inlet angles are controlled to remedy the ship inclination. This results in the stable voyage with a lower fuel consumption.

Stable Voyage System with GYROFIN Stabilizer



COMPREHENSIVE SUPPLIER OF ELECTRIC EQUIPMENT & MACHINERY FOR MARINE USE

Taiyo Electric Group, Taiyo Electric Co., Ltd and Sanshin Electric Corporation, have accumulated sales records since its founding nearly a century ago. Today, we deliver highly reliable electrical equipment for wide variety of vessels all over the world.



Vessels equipped with our products range from small fishing boats and coastal ships to large vessels, including containerships, cruise ships, bulk carriers, VLCCs and LNGCs.

When developing new products, Taiyo group bears in mind the specific requirements of each individual vessel as well as the needs of the times, while pursuing the highest possible quality and technical standards. As a leading manufacturer of marine electrical equipment, we produce and market a diversity of system-based products, including thyristor type shaft generator systems and inverter control devices, in addition to general electrical machinery and equipment such as generators, motors, ventilators, switchboards, starters, main engine monitoring boards, searchlights and lighting fixtures.

Based upon our valuable experience and wealthy knowledge with the unique solution as "total supplier", Taiyo Electric Group has a favorable reception from shipyards & ship owners of various countries in the world.

● Main Products of Taiyo Electric Co., Ltd.

- Generators
- Induction Motors
- Ventilation Fans
- Switchboards & Starters
- Alarm Monitoring System
- Inverter Speed Control Systems
- Thyristor Control Shaft Generating System
- Diesel Electric Propulsion System



Anti-Piracy Search Light

- New development for the anti-piracy purpose
- Effective to keep guard in the night and give bedazzlement to suspect vessels by powerful beam of over 1,000,000cd.
- Xenon lamp or Metal halide lamp 150W
- Suitable for the on deck use "Water Proof IP56"
- Various type of installation and operation "Fixed mounting" "Temporary clamp mounting" and "Hand held operation".



RBM-16VB /
RBX-16VB

Easy operation to connect the plug to the socket-outlet of power source because the ballast is combined with search light. Available to light up around the ship by temporary clamp installation to balustrade on deck. Possible to use as portable search light by connection of the optional extension cable.

Different size of installation clamp is available on request.

● Main Products of Sanshin Electric Corporation

- Revolving Machines
- Legal Marine Apparatus
- Wiring Fittings
- Signal and Alarm Equipments
- Security and Guard Apparatus
- Marine Equipments and Fish Collecting Light
- Searchlights
- Lighting Fixtures
- Marine Parts

● Head Office

Sanritsusha Bldg., 16-8, 1-chome, Uchikanda, Chiyoda-ku,
Tokyo 101-0047 Japan

[Taiyo Electric Co., Ltd.]

Tel : +81-3-3293-3067 Fax : +81-3-3292-7012

URL : <http://www.taiyo-electric.co.jp>

[Sanshin Electric Corporation]

Tel : +81-3-3295-1831 Fax : +81-3-5259-8043

URL : <http://www.sanshin-electric.co.jp>

● Liaison Office and/or Agent

Wilhelm Rump KG GmbH & Co.

Buchheisterstrabe 6 20457 Hamburg

Dr Kay Rump Tel : +40 3 17 84 20 Fax : +40 3 19 48 41

● Outline of Company

Yanmar, ever since its foundation, has been developing versatile energy and labor-saving diesel engines with output ranging from 2kW to 3,500kW through its unique diesel technologies, contributing to the community through energy conservation.

Our ceaseless efforts to produce ever higher quality products were rewarded with ISO9001 certification by Lloyds (LRQA) of Britain for the Amagasaki Plant of the Large Power Products Operations Division in July 1992, confirming international recognition for the excellent quality assurance system of the plant. The Large Power Products Operations Division of Yanmar has been a pioneer in tackling environmental problems and in June, 1997, the Amagasaki Plant became the first large industrial and marine diesel engine plant in Japan to be certified under ISO14001. The marine diesel engines produced by the Amagasaki Plant were also the first in Japan to clear the emission (NOx) control regulations of the IMO. The far-sighted efforts and excellent technologies of the Large Power Products Operations Division protect our environment and are highly evaluated in the world.

The Amagasaki Plant of Yanmar aims to ensure beautiful harmony with the global environment and to contribute widely throughout industry and society to create a better future for all.

● Head Office

Export Dept. Large Power Products Operations Division
1-1, Yaesu 2-chome, Chuo-ku, Tokyo 104-0028, Japan.
Tel: +81-3-3275-4909
Fax: +81-3-3275-4969
<http://www.yanmar.co.jp>

● Overseas Subsidiary

Yanmar Europe B.V.
Brugplein 11, 1332 BS Almere-de Vaart, The Netherlands
Tel: +31-36-5493200
Fax: +31-36-5493209
<http://www.yanmar.nl>

● Main Products

Marine propulsion and auxiliary diesel engines

● Exhibits

Marine auxiliary diesel engine, Model 6EY18 (A) L Cut Model



Model 6EY18 (A) L

● Features 6EY18 (A) L:

1. The low sac type fuel valves, variable jacket water temperature control and valve stem seal with backpressure lip, are technologies included to reduce soiling of the combustion chamber which occurs with the use of low-grade heavy oil.
2. With the introduction of a new "stay clean" design turbocharger maintenance intervals will be lengthened while the automatic back washing LO filter allows for maintenance-free operation.
3. Compact design allows simplicity in the engine room layout.
4. With concentration of the pipe connections at the front of the engine, piping construction man-hours are reduced.
5. The intercooler and stand of turbocharger have been designed as a single compact unit. The number of parts has been reduced by 30%, further increasing ease of maintenance.
6. High probability of corresponding to future environmental regulations.

● **Outline of company**

TAIKO, as a general manufacture of pumps and environment equipments, has produced various kinds of marine pumps, bilge separator, sewage treatment device and the cargo pump system for tankers. We continue to contribute the modernization of marine industry under motto of "Clean the sea and friendly to the earth".

● **Main products**

Gear pump
Screw pump
Centrifugal pump
Sewage Treatment Device
Oily Water Separator
Piston pump
Rotary blower
Vacuum pump

● **Head office**

Oversea Business Sect.
209-1 Shimotabuse, Tabuse-cho, Kumage-gun,
Yamaguchi 742-1598, JAPAN
Tel: 81-820-52-3113 Fax: 81-820-53-1001
E-mail: business@taiko-kk.com

● **Korea**

41-30 Gupyung-dong Sha-gu, Busan Korea
Tel: 82-51-261-9895 Fax: 82-51-261-9897
E-mail: taikokim@hanmail.net

● **China**

28 F/F, Times Square, No 500 Zhangyang rd, Shanghai
200122, China
Tel: 86-21-5836-8070 Fax: 86-21-5836-8077
E-mail: shanghai@taiko-kk.com

● **Panel Exhibits**

New Sewage Treatment Plant, SBH series

- High performance for new regulation MEPC.159(55)
- A unit type and the space - saving type.
- Easy operation and maintenance

● **About the rule and plant**

New resolution MEPC.159(55) for sewage treatment devices was adopted, and it is applied to the ships for which keels are laid after the 1st January 2010.

● **Agent in Europe**

- FUJI TRADING (MARINE) B.V.
POST BOX 2498, 3000 CL Rotterdam,
Sluysjesdijk 109, 3087 AE Rotterdam,
THE NETHER LANDS
Tel: 010-429 88 33 Fax: 010-429 52 27
- NIPPON DIESEL SERVICE GMBH
Hermann-Blohm-Str. 1
D-20457 Hamburg GERMANY
Tel: +49-40317710 Fax: +49-40311598
- UNIVERSAL MARINE SUPPLIES LTD.
10 Skouze & Filonos Str. Piraeus GREECE
Tel: +30-2104287740 Fax: +30-2104287744



● **Head Office**
Japan Marine Equipment Association

6th Floor, Kaiyo Senpaku Building,
15-16, Toranomon 1-chome, Minato-ku, Tokyo 105-0001,
Japan

Tel: +81-3-3502-2041

Fax: +81-3-3591-2206

E-mail: info@jsmea.or.jp

URL: <http://www.jsmea.or.jp>

● **Overseas Offices**

• **Shanghai**

JETRO Shanghai, Ship Machinery Department
21st Floor, Shanghai International Trade Centre,
2201, Yan An Xi Road, Shanghai 200336, P.R.C.

Tel: +86-21-6270-0489

Fax: +86-21-6270-0499

• **London**

Japan Ship Centre (JETRO), Ship Machinery Department
2nd Floor, 6 Lloyd's Avenue, London EC3N 3AX UK

Tel: +44-20-7680-9456

Fax: +44-20-7680-9416

E-mail: info@jsc.org.uk

URL: <http://www.jsc.org.uk>

• **Singapore**

JETRO Singapore, Ship Machinery Division
Hong Leong Building, #38-01 to 05 #37-02A
16 Raffles Quay, SINGAPORE 048581

Tel: +65-6429-9522

Fax: +65-6224-1169