



7 - 10 sept. 2010

shipbuilding ■ machinery &
marine technology international
trade fair ■ hamburg



This article is published under a grant from
The Nippon Foundation.



JSMEA

Japan Marine Equipment Association



Japan Marine Equipment Association

● **Head Office**

6th Floor, Kaiyo Senpaku Building, 15-16,
Toranomon 1-chome, Minato-ku, Tokyo 105-0001, Japan
Tel: +81-3-3502-2041 Fax: +81-3-3591-2206
E-mail: info@jsmea.or.jp
URL: <http://www.jsmea.or.jp>

● **Overseas Offices**

• **Singapore**

JETRO Singapore, Ship Machinery Division
Hong Leong Building, #38-01 to 05 #37-02A
16 Raffles Quay, SINGAPORE 048581
Tel: +65-6221-8174 Fax: +65-6224-1169

• **Shanghai**

JETRO Shanghai, Ship Machinery Department
21st Floor, Shanghai International Trade Centre,
2201, Yan An Xi Road, Shanghai 200336, P.R.C.
Tel: +86-21-6270-0489 Fax: +86-21-6270-0499

• **London**

Japan Ship Centre (JETRO), Ship Machinery Department
2nd Floor, 6 Lloyd's Avenue, London EC3N 3AX UK
Tel: +44-20-7680-9456 Fax: +44-20-7680-9416
E-mail: info@jsc.org.uk
URL: <http://www.jsc.org.uk>

Exhibitors

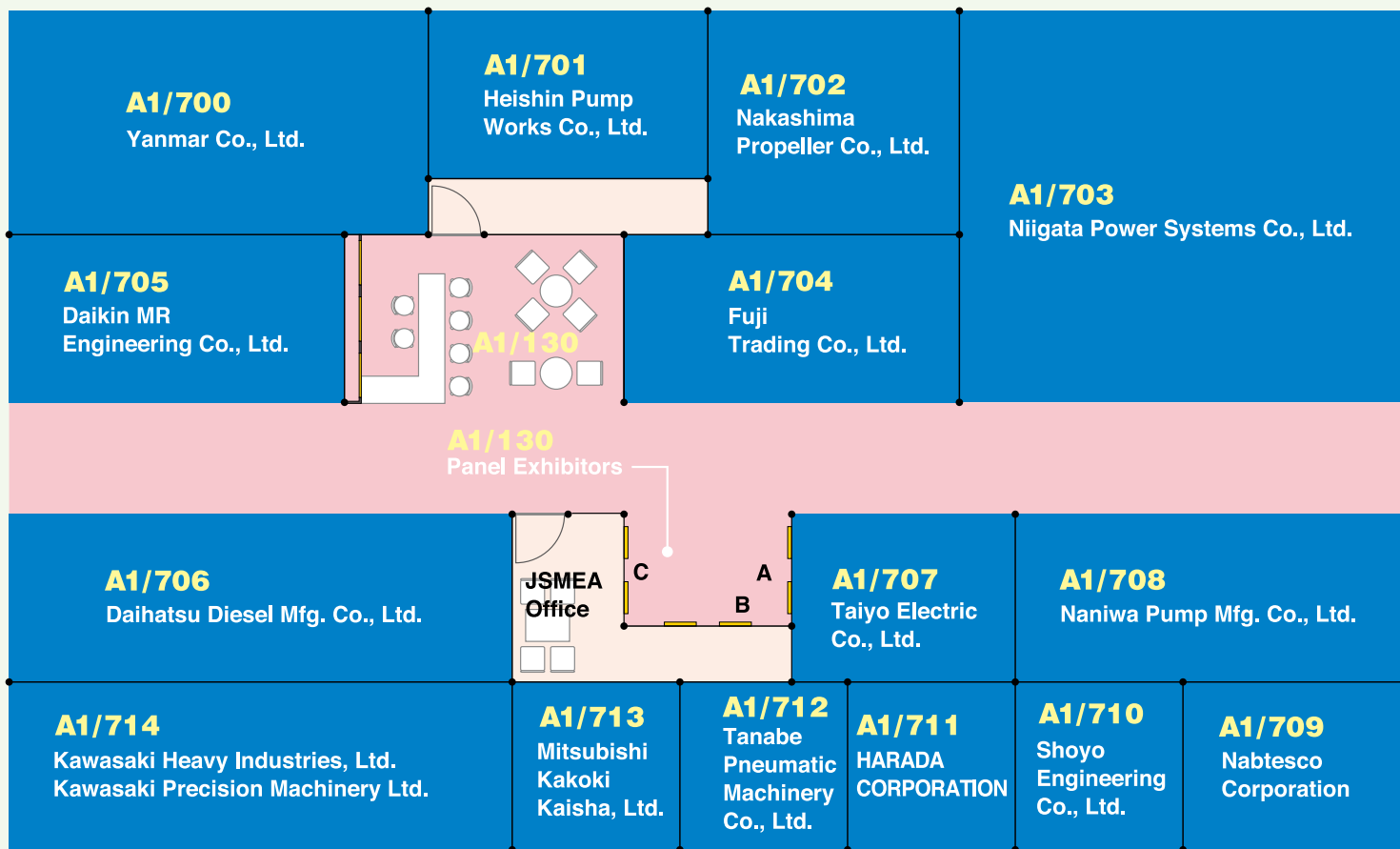
Daihatsu Diesel Mfg. Co., Ltd.	6
Daikin MR Engineering Co., Ltd.	8
Fuji Trading Co., Ltd.	10
HARADA CORPORATION	12
Heishin Pump Works Co., Ltd.	14
Kawasaki Heavy Industries, Ltd.	16
Kawasaki Precision Machinery Ltd.	18
Mitsubishi Kakoki Kaisha, Ltd.	20
Nabtesco Corporation	22
Nakashima Propeller Co., Ltd.	24
Naniwa Pump Mfg. Co., Ltd.	26
Niigata Power Systems Co., Ltd.	28
Shoyo Engineering Co., Ltd.	30
Taiyo Electric Co., Ltd.	32
Tanabe Pneumatic Machinery Co., Ltd.	34
Yanmar Co., Ltd.	36
.....	
JFE Engineering Corporation	38
Nishishiba Electric Co., Ltd.	40
Uzushio Electric Co., Ltd.	42



JSMEA

Japan Marine Equipment Association

Stand No. : A1/130



Panel Exhibitors

- A : Uzushio Electric Co., Ltd.
- B : JFE Engineering Corporation
- C : Nishishiba Electric Co., Ltd.

● Outline of Company

Since its establishment in 1907, Daihatsu Diesel Mfg. Co., Ltd. has pioneered the ages and has maintained a first rate position in the Diesel engine business. Our Diesel engines in the 50 to 7000kW range has been very popular in both the overseas and home markets, confirming Daihatsu Diesel as the leading company in this field. We believe our reputation is the result of our dedicated and consistent efforts to provide reliable products, and that it is our duty as an enterprise to uphold the Daihatsu principles and corporate attitude. Our constant efforts to achieve the highest quality can be seen in the industry-leading quality assurance systems of Daihatsu Diesel's Headquarter and Moriyama Plants, which has been certified by Lloyd's Register Quality Assurance Ltd. as satisfying the requirements of ISO9001.

Daihatsu Diesel, targeting the global market, will continue fostering a progressive business culture. Furthermore, we are fully determined to fulfill the trust and expectations of our valued customers, and to contribute to the society through technological innovations with emphasis on environmental consciousness and quality.

● Main Products

Marine Propulsion and Auxiliary Diesel Engines

● Tokyo Office

16-11, Nihonbashi 1-chome, Chuo-ku,
Tokyo 103-0027, Japan

Tel: +81-3-3279-0827 Fax: +81-3-3245-0395

URL: <http://www.dhtd.co.jp>

● Liaison Offices

Daihatsu Diesel (Europe) Limited

5th Floor, Devon House, 58-60 St. Katharine's Way,
London E1W 1LB, U.K.

Tel: +44-20-7977-0280 Fax: +44-20-7702-4325

E-mail: daihatsu@ddeuk.com

Features of New Model Engine

Developed as a large DC series engine, the DC-32 is reliable and strong, incorporating experiences gained in developing the DK engine, and is based on the DC series development concept.

The compression ratio is the highest of any engine in this class, and the piston combustion chamber is shaped optimally for heavy fuel oil combustion, using a highly efficient supercharger. These features ensure stable low-load combustion of heavy fuel oil.

Incorporating an optimal intake port shape, a fuel injection pump with high injection pressure, and a noncooled fuel nozzle, Daihatsu has achieved low fuel consumption by matching these features to the most suitable conditions. The DC-32 meets increasingly strict environmental regulations by using a shape enabling clean combustion based on an analysis of the combustion chamber.

Taking into operability in projected maintenance, this engine enables the power unit — cylinder head, cylinder liner, piston, and connecting rod — to be opened from the engine by one operation.

Electronic Engine Control

To make engine handling easier and reduce exhaust emission performance, Daihatsu introduces control devices such as electronic monitoring in the engine, an electronic governor, and electronic fuel oil injection device.

Low Marine Auxiliary Engine Load

Using 2 fresh-water cooling systems — a cooler and a jacket for engine cooling — Daihatsu has kept jacket cooling water at a constant high temperature. For the air cooler, Daihatsu uses 2-stage cooling in which high-temperature jacket-cooling fresh water and low-temperature fresh water of the cooler system flow. Air is heated automatically to ensure stable heavy oil combustion at a low load.

Reliability, Durability, and Component Function

Daihatsu has reviewed the cooling water system, channel configuration, and engine lubrication, and have arranged the pump, cooler, and other auxiliary machinery in front of the engine to guard against component malfunction. The DC-32 is simple and excellent in handling thanks to the significantly reduced number of piping and components. Advanced structural analysis has been introduced via new software for major operating sections and components. Daihatsu plans to confirm quality through continuous engine endurance operation.



● Outline of Company

Daikin MR Engineering Co., Ltd. is an engineering company commissioned for turnkey solutions ranging from the manufacture and sales of marine air conditioning and refrigeration equipment to the design and installation of air conditioning and refrigeration systems. Established in September 2008 as a wholly owned subsidiary of Daikin Industries, Ltd. , Daikin MR Engineering leverages over 70 years of experience gained since 1939 in marine air conditioning and refrigeration equipment by our parent company, Daikin Industries.

Daikin MR Engineering works closely with customers to create concept for marine air conditioning and refrigeration equipment that realize product development solutions corresponding to the actually needs of the customer. Recognizing that nothing is more important in marine equipment than reliability, we are persistently advancing forward in our pursuit of No.1 in quality.

Daikin MR Engineering is further enhancing products development through cutting-edge air conditioning and refrigeration technology developed by Daikin Industries, as we strive to contribute for customers through cooperating with Daikin Group companies engaged in marine field.



Marine Type
Deck Unit

● Main Products

- Marine type packaged air conditioner: USP, USF series
- Marine type deck unit: USDP, USDN series
- Marine type small size condensing unit: RHS, RKS series
- Marine type water chilling unit: UWS series
- Compressor for air conditioner & refrigeration

● Head Office

Shin-osaka Central-tower 11F, 5-5-15, Nishinakajima, Yodogawa-ku,
Osaka-shi, Osaka, 532-0011, Japan
Marine Air conditioning & Refrigeration Sales Div.
Tel : +81-6-4805-7298
Fax: +81-6-4805-7321
E-mail: marin.aircon@daikin.co.jp
URL: <http://www.daikin.co.jp/group/dmre/english/index.html>

● Liaison office

《Daikin Marine Group》

• Daikin Europe N.V.-Hamburg Marine Office

Stresemannstrasse 34222 761 Hamburg, Germany
Tel : +49(0)40 890609-11
Fax: +49(0)40 890609-10
URL: <http://www.daikin.eu/product/industrial/marine/>

• Daikin Airconditioning (Singapore) Pte. Ltd.

URL: <http://www.daikin.com.sg/>

• Daikin Marine (Shanghai) Co., Ltd.

URL: <http://daikin-marine.com/en/company/>
Tel : +86-21-63224198
Fax: +86-21-63224199

• J&E Hall

URL: <http://www.jehall.co.uk/>



Marine Type
Packaged Air Conditioner
for GALLEY



Marine Type
Packaged Air Conditioner



FUJI TRADING CO., LTD.

● Outline of Company

Fuji Trading Co., Ltd. was established as a marine supplier in 1953 in Kobe, Japan. Over 55 years since then, the company has expanded and diversified into a supplier of technology, off-shore drilling equipment and machinery as well as a developer of new markets and business opportunities.

Our job is to make procurement, transportation, and customs clearance of the required goods for our customers who travel around a unique market of "Marine" on a global scale by ship. We supply their requirements safely and accurately at main ports in the world within a limited time.

Through the above business, we contribute to the world trade by supporting smooth and economical ship's operation. In order to execute our task, we give the highest priority to the partnership with our customers, business acquaintances and makers. We are now upgrading and integrating our three functions, that is; information, procurement and physical distribution.

We have been rendering quality services of ship's stores, provisions, machinery, spare parts, engineering and so on. With the international network through the main depots and offices at Kobe, Yokohama, Tokyo, Rotterdam, London, Dubai, Singapore, Hong Kong, Shanghai, Pusan, and Baltimore, we are ready to provide the professional services at any time and place.

URL: <http://www.fujitrading.co.jp/>

TAKASHINA LIFE PRESERVERS CO., LTD.

Takashina Life Preservers Co., Ltd. was established in 1935 in Osaka, Japan. We manufacture products to protect our water environment & safety of those who work or recreate on water. Key products include life jackets, life buoys, immersion suits, dry suits, foul weather gear, and other marine accessories. It is our goal to satisfy our customers with a blend of quality, performance, and cost.

URL: <http://www.jsmea.or.jp/kaiin/takashina/>

● Offices in Japan

• Kobe Office

Tel: +81-78-413-2601 Fax: +81-78-413-1386
E-mail: mhq@fujitrading.co.jp

• Yokohama Office

Tel: +81-45-622-5661 Fax: +81-45-629-1007
E-mail: supplyyh@fujitrading.co.jp

• Tokyo Office

Tel: +81-3-5783-7390 Fax: +81-3-3450-7100
E-mail: tokyo@fujitrading.co.jp

● Group Companies in Japan

• Fuji Transport Systems Co., Ltd.

Tel: +81-78-411-2633 Fax: +81-78-411-3178
E-mail: fttr@fujitransport.co.jp

• Yokohama Tsusho Co., Ltd.

Tel: +81-45-621-8588 Fax: +81-45-621-8662
E-mail: info@yokotsu.co.jp

● Overseas Group Companies

• Europe

Fuji Trading (Marine) B.V., Rotterdam

Tel: +31-10-429-8833 Fax: +31-10-429-5227
E-mail: info@fujitrading.nl

Fuji Trading London Office

Tel: +44-20-7236-0507 Fax: +44-20-7236-0521
E-mail: mail@fujitrading.co.uk

• Middle East

Middle East-Fuji (L.L.C.)

Tel: +971-4-347-4444 Fax: +971-4-347-2771
E-mail: info@mef.ae

• Asia

Fuji Trading (Singapore) Pte. Ltd.

Tel: +65-6264-1755 Fax: +65-6265-0443
E-mail: info@fujifts.com

Fuji Trading (Marine) Co., Ltd., Hong Kong

Tel: +852-2529-9177 Fax: +852-2865-6175
E-mail: info@fujitradinghk.com

Hanil-Fuji (Korea) Co., Ltd.

Tel: +82-51-712-8300, 8400 Fax: +82-51-631-7735
E-mail: shipstore@hanilss.com / spare@hanilss.com

Fuji Trading (Shanghai) Co., Ltd.

Tel: +86-21-6853-8813 Fax: +86-21-5821-1257
E-mail: ftzstores@fujitrading.net / ftzrepair@fujitrading.net

• U.S.A.

Fuji Trading (America) Inc.

Tel: +1-410-238-7985 Fax: +1-410-238-7989
E-mail: sales@fujitrading.us

● Exhibits

1. Information related soft and hardware
2. Procurement related soft and hardware
3. Distribution related soft and hardware

With the above three main themes, we have exhibited what Fuji can provide for our customers now.

- Global Technical Network Service
- "FINE (Fuji Information Net) system - 24-hour information service of your spare parts status
- IMPA Marine Stores Guide
- Immersion Suit, Fire Fighting Suit, Life Jacket of Takashina Life Preservers make as safety package
- FN Tapes
- Introduction of Teikoku Pump

● Outline of Company

HARADA CORPORATION is one of the leading trading companies in Japan, who have more than 50 years experiences in marine industries.

We import high quality products from foreign countries and supply them to Japanese shipyards.

Our service is not limited to the supply of products but also covers technical support for engineering coordination prior to manufacture of the products, providing instruction and training for the products at site and commissioning of the products based on the know-how we have accumulated.

● Offices

Japan Office

• Osaka head office

Tel: +81-(0)6-6244-0171

E-mail: enquiry@haradacorp.co.jp

• Tokyo office

Machinery Department

Tokio Marine Nichido Bldg. Shinkan, 2-1, Marunouchi 1-Chome,
Chiyoda-ku, Tokyo 100-0005, Japan

Tel: +81-(0)3-5222-7172(Japan)

Fax: +81-(0)3-3213-8399

URL: <http://www.haradacorp.co.jp/en/>

● Overseas Branch

• Singapore Branch

• Taiwan Branch

• Korea Branch

• Philippine Rep. Office

● Exhibit

- 1) CALMMOON Sheet (Damping material)
- 2) Eco Shield Film (Heat shield film)

● Features

- 1) CALMMOON Sheet is a new type of damping material that enables easy installation 'Just to attach' and 'No curing time.' Even its thickness of 1.3 mm, this CALMMOON Sheet provides excellent damping effect and total cost reduction due to its easy and short installation time.
- 2) Eco Shield Film can reduce UV and near-infrared rays from the sun through the windows, so it provides a comfortable in-room environment just by application on window glasses. Although the film is very clear with good visibility, it can cut out 75% of the heat.

In addition to the above products, we are open for general discussion with somebody who is going to sell to Japanese market.

● Outline of Company

Heishin Pump Works Co., Ltd., is the oldest Japanese manufacturer of various kind of marine pumps, and Bilge Separator.

We have a firm policy that we should provide products which contribute to the protection of world ecology, for example the Bilge Separator.

● Main Products

Centrifugal pump

Gear pump

Piston pump

Screw pump

15ppm Bilge Separator (Oily Water Separator)

ODM (Oil Discharge Monitoring Control System)

● Head Office

1-5-30, Furuta, Harima-cho, Kako-gun, Hyogo Pref.,
675-0146 Japan

Tel: +81-79-436-3001

Fax: +81-79-436-3015

E-mail: kaigai@hsn-kikai.com

URL: <http://www.hsn-kikai.com>

● Exhibits

15ppm Bilge Separator / HFM type



● Features

- Easy Maintenance / Easy Cleaning
- Easy Installation & Piping
- World Smallest size

● Process

- First stage : Multi-parallel plate
- Second stage : Emulsion breaker
- Third stage : Coalescer
- Fourth stage : Fine coalescer

● Approved by

- JG/MED/USCG/CCS

● Outline of Company

Since its establishment in 1878, Kawasaki Heavy Industries, Ltd. has dedicated itself to innovative technological development and has been active in business worldwide.

It has expanded from its origin in shipbuilding to rolling stock, aircraft, machinery, plants and equipment, bridges, motorcycles and more.

Now Kawasaki is engaged in areas such as transportation, the development of energy and of space and environmental protection; projects crucial to the lives and livelihoods of future generations.

Kawasaki is aggressive in its pursuit of technological developments – we are building dreams by staying in front.

● Main Products

- Diesel Engine, Main Steam turbine, Reduction Gear
- C.P. Propeller, Side thruster, Azimuth thruster & Integrated control system
- Main Boiler (Kawasaki Plant Systems, Ltd.)
- Steering gear, Deck machinery and Camera stabilizer on ships (Kawasaki Precision Machinery Ltd.)
- Shipbuilding & Repairing (Kawasaki Shipbuilding Corporation)

● Head Office

Kawasaki Heavy Industries, Ltd.

World Trade Center Building, 4-1, Hamamatsu-cho 2-chome, Minato-ku, Tokyo 105-6116, Japan
Tel: +81-3-3435-2374 Fax: +81-3-3435-2022
URL: <http://www.khi.co.jp/>

● Liaison Offices

Kawasaki Heavy Industries (Europe) B.V.

7th Floor, Rivierstaete, Amsteldijk 166, 1079 LH Amsterdam, The Netherlands
Tel: +31-20-644-6869 Fax: +31-20-642-5725

Kawasaki Heavy Industries (UK) Ltd.

4th Floor, 3 St. Helen's Place, London EC3A 6AB, United Kingdom
Tel: +44-20-7588-5222 Fax: +44-20-7588-5333

● Affiliated Companies

Kawasaki Plant Systems, Ltd.

11-1, Minamisuna, 2-chome, Koto-ku, Tokyo 136-8588, Japan
Tel: +81-3-3615-6979 Fax: +81-3-3615-9663
URL: <http://www.khi.co.jp/kplant>

Kawasaki Precision Machinery Ltd.

4-1, Hamamatsu-cho 2-chome, Minato-ku, Tokyo 105-6116, Japan
Tel: +81-3-3435-6879 Fax: +81-3-3435-2023
URL: <http://www.khi.co.jp/kpm/>

Kawasaki Shipbuilding Corporation

4-1, Hamamatsu-cho 2-chome, Minato-ku, Tokyo 105-6116, Japan
Tel: +81-3-3435-2141 Fax: +81-3-3436-3038
URL: <http://www.kawasakizosen.co.jp>

Main Steam Turbine



Main Boiler



Reduction Gear



Diesel Engine



Azimuth thruster



Side Thruster



C. P. Propeller



Steering Gear



● Outline of company

More than eighty years has passed since Kawasaki Precision Machinery Ltd., began the manufacture of electro-hydraulic steering gears in 1924. During this period our products have gained high reputation among shipbuilders not only in Japan but also in many countries of the world, and we have supplied more than 16,000 units of steering gear.

Subsequently, we also advanced into the manufacturing of hydraulic deck machinery. High-pressure, compact, quiet, and with superior speed control, this machinery has earned an excellent reputation. It has been used in over 5,500 ships - LNG carriers, container ships, VLCCs, ferries, and more. In this field, too, we are the world leader.

● Main products

- Steering gear
- Deck machinery
- Hydraulic equipment (hydraulic motor, pump, valve)

● Head office/Main Plant

234, Matsumoto, Hasetani-cho, Nishi-ku, Kobe 651-2239, Japan

Tel: +81-78-991-1133 Fax: +81-78-991-3186

URL: <http://www.khi.co.jp/kpm>

• Tokyo office

World Trade Center Bldg., 4-1, Hamamatsu-cho 2-chome,
Minato-ku, Tokyo 105-6116, Japan

Tel: +81-3-3435-6881 Fax: +81-3-3435-2023

• Kobe office

Kobe Crystal Tower, 1-3 Higashikawasaki-cho 1-chome, Chuo-ku,
Kobe 650-8680, Japan

Tel: +81-78-360-8608 Fax: +81-78-360-8609

● Overseas office

• Kawasaki Precision Machinery (UK) Ltd.

Ernesettle Lane, Ernesettle, Plymouth, Devon PL5 2SA,
United Kingdom

Tel: +44-1752-364394 Fax: +44-1752-364816

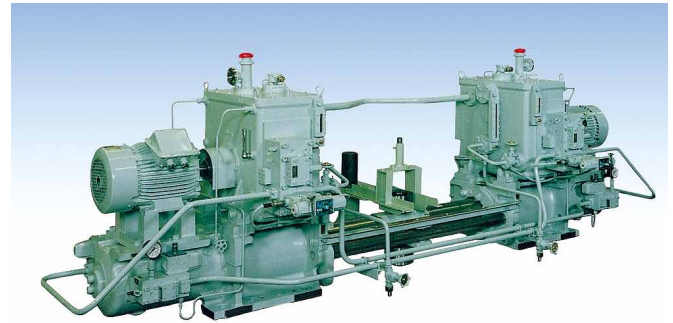
URL: <http://www.kpm-eu.com>

• Flutek, Ltd. (Marine Machinery Factory)

79-2, Bongsu-myeon samgari, Uiryeong, Kyungnam,
641-370 Republic of Korea

Tel: +82-55-574-5744 Fax: +82-55-574-5714

URL: <http://www.flutek.co.kr>



● **Outline of Company**

Mitsubishi Kakoki Kaisha, Ltd. (MKK) was established in 1935 financed by several companies in the Mitsubishi Group for the purpose of promoting the production of chemical machinery and equipment in Japan. Mitsubishi oil purifier, sludge separator and filters have been contributing to the considerable saving in maintenance and operation labor for the ship.

● **Main Products**

- Oil purifier
- Sludge separator
- Oil filter (Mitsubishi MK filter)



● **Head Office**

1-2, Miyamae-cho, Kawasaki-ku, Kawasaki 210-0012, Japan
Machinery Sales Dept.
Tel: +81-44-246-7350
Fax: +81-44-246-7352
E-mail: mkkkikai@kakoki.co.jp
URL: <http://www.kakoki.co.jp>

● **Liaison Office**

MKK Europe B.V.
Spinnerij 41, 1185ZS Amstelveen, The Netherlands
Tel: +31-20-45-60-666
Fax: +31-20-45-60-635
E-mail: meb@euronet.nl

● **Features**

Mitsubishi Selfjector Genius Series was developed under the concept of “more toughness and less maintenance labor by enhancing reliability” to which even higher purification performance and G-HIDENS system were added. Furthermore, with simplification of installation work by a semi-unit for the main body, and digitalization of detectors and gauges, daily inspection procedure has become easier.

● Outline of Company

NABTESCO Corporation has been the world's leading manufacturer of motion control systems for Air, Land and Marine field applications.

NABTESCO Corporation has played a leading role in the total control system in marine field, especially M-800 series main engine remote control system and MG-800 digital governor system has enjoyed a good reputation among customers the world over.

● Main Products

- Main Engine (diesel or turbine) remote control system
- CPP, Side thruster, Steerable thruster and Water-jet remote control system
- Digital governor system
- Engine telegraph system and Telegraph logger, Revolution indicating system
- Main engine monitoring system

● Head Office

Kokusai Hamamatsucho Building, 9-18, Kaigan 1-chome, Minato-ku, Tokyo 105-0022, Japan
 Tel: +81-3-5470-2413 Fax: +81-3-5470-2417
 E-mail: marine-overseas@nabtesco.com

● Legitimate Companies

• NABMIC B.V.

Tel: +31-180-530-590 Fax: +31-180-530-591
 E-mail: nabmic@nabmic.nl

• NABTESCO Marine Service Singapore Pte. Ltd.

Tel: +65-6225-6559 Fax: +65-6225-7393

• NABTESCO Marineteq Co., Ltd.

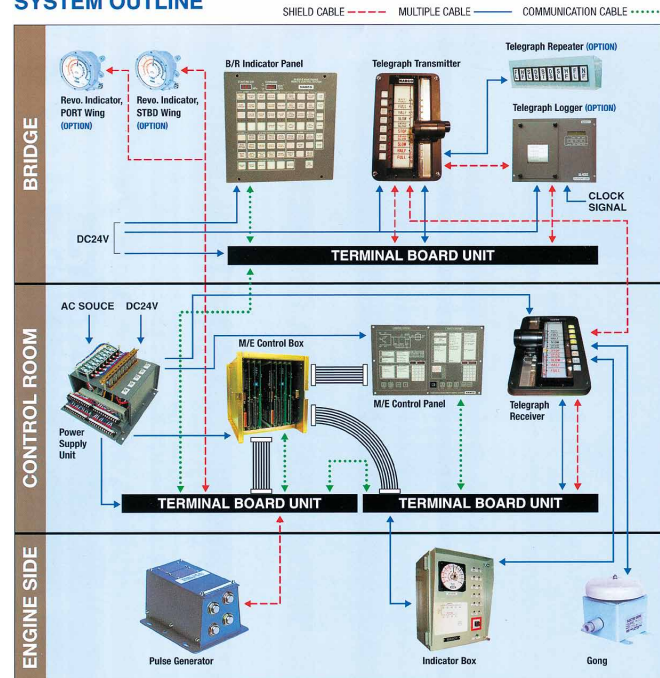
Tel: +82-51-464-9380 Fax: +82-51-464-8250

• NABTESCO Marine Control Systems (Shanghai) Co., Ltd.

Tel: +86-21-5852-0363 Fax: +86-21-5852-0348

M-800-III Series Bridge Maneuvering system

SYSTEM OUTLINE



● Features

- Highly visible and functional arrangement of indicator lamps and switches for easy and accurate operation
- Flexible pattern of indicator and alarm by microcomputer
- Data communication with easy expansion by LAN based on CAN
- Output signal for Voyage Data Recorder as standard
- Shorten wiring time by flat cables
- Less wiring due to serial communication
- Even one line has a trouble, communication is possible by using remained two lines

● Panel Exhibits

Introduction of following items:

- M-800-III Series Bridge Maneuvering System & MG-800 Digital Governor System
- Worldwide network services

● Outline of company

Nakashima Propeller is the leading company of marine propulsion specialists in the world. Since founded in 1926, we have continuously been advancing to be the world's only comprehensive designers/manufacturers of marine propulsion equipment applicable to a wide range from smaller-sized pleasure boats and fishing boats up to large-sized merchant vessels including ULCC, mega container vessels, and LNG carriers, by utilizing experiences accumulated.

● Main Products

- Fixed Pitch Propeller
- Controllable Pitch Propeller
- Side Thruster
- Shafting Equipment

● Head Office

688-1, Joto-Kitagata, Higashi-Ku Okayama 709-0625, Japan

Tel: +81-86-279-5111

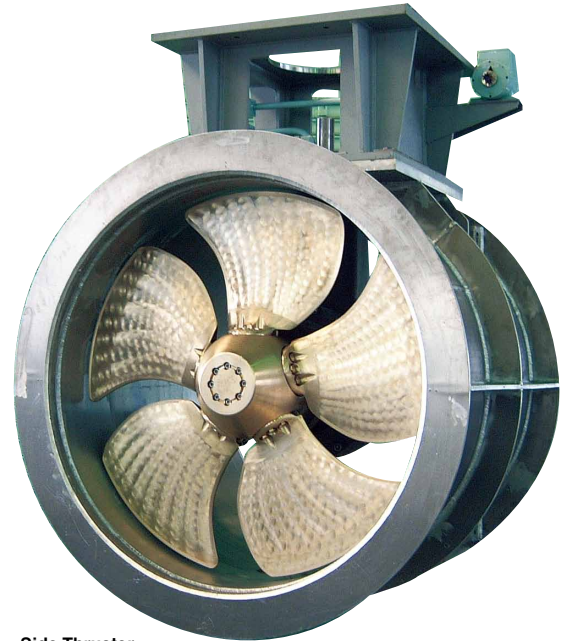
Fax: +81-86-279-3107

URL: <http://www.nakashima.co.jp/en>

E-mail: npcwebmaster@nakashima.co.jp



Controllable Pitch Propeller



Side Thruster

● Exhibits & Features

1. Fixed Pitch Propeller (F.P.P.) & Controllable Pitch Propeller (C.P.P.)

Nakashima Propeller's F.P.P. & C.P.P. with a variety of sizes/models available for a wide range of the applications.

2. Side Thruster

Nakashima Propeller's side thrusters to facilitate the vessels's operation sideways effectively and efficiently near a quay or a dockyard.



● Outline of Company

NANIWA PROVIDES WORLD CLASS
RELIABILITY AND PERFORMANCE

Naniwa Pump Mfg. Co., Ltd., is a leading Japanese manufacturer of a wide variety of marine and industrial pumps.

Naniwa brand is known Worldwide for its superior quality and performance for all types of Marine Engine Room and Cargo Pumps.

Both the quality and design of Naniwa Pumps meet or exceed the global requirements of classification societies and national standards.

Naniwa Pump is capable of expediting all customers' needs.

● Main Products

Pumps and Steam Turbines of all types and related systems and equipment for marine applications:

1) Engine room pumps:

- Centrifugal pumps
- Piston pumps
- Rotary gear pumps
- Hydrophore tank unit
- Rotary screw pumps
- Central priming unit

2) Pump room pump package:

- Cargo pumps: Centrifugal type or two-rotor screw type
- Water ballast pumps: Centrifugal type
- Stripping pumps: Steam driven reciprocating type or two-rotor screw type
- Automatic priming, capacity regulating and stripping systems

● Head Office

11-5, Shinmachi 3-chome, Nishi-ku, Osaka 550-0013, Japan

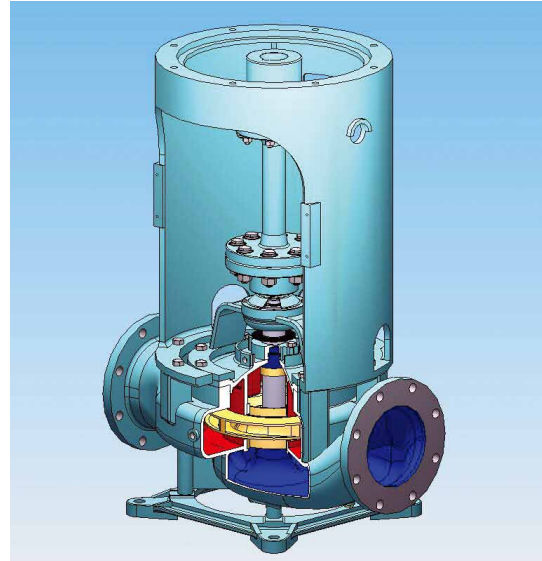
Tel: +81-6-6541-6231 Fax: +81-6-6541-7492

E-mail: kaigai@naniwa-pump.co.jp

URL: <http://www.naniwa-pump.co.jp>

● Exhibits

Centrifugal Pump model FIV-200



● Feature

Centrifugal Pump model FIV-200

Item		
Pump type		Vertical single stage, single suction Centrifugal Pump
Application		Main Cool. S.W. Pump Ballast Pump, etc.
Bore	mm	200/200 (Suc./Dis.)
Capacity	m ³ /h	25 ~ 360
T. Head	m	15 ~ 55
Speed	rpm	1450/1750
Weight	kg	350

● Liaison office and/or agent

Europe Representative Office

Hemmingstedter Weg 111a

D-22609 Hamburg, Germany

Tel: +49-40-890-5779 Fax: +49-40-890-5785

E-mail: naniwa@sinz.org

● Outline of Company

Niigata Power Systems is one of the leading suppliers of diesel engines and azimuth thrusters. Our products NIIGATA DIESEL is famous for its innovative technologies and operational stability in hard conditions.

Azimuth thruster named NIIGATA Z-peller has been delivered over 3000 units until today and acquired worldwide reputation.

● Main Products (Marine field related)

- 1) Diesel engines
- 2) Z-pellers
- 3) Couplings and dampers
- 4) Remote control and monitoring system.

● Head Office

2-9-7 Yaesu Chuo-ku Tokyo 104-0028 Japan
Tel: +81-3-6214-2836 Fax: +81-3-6214-2839
URL: <http://www.niigata-power.com>

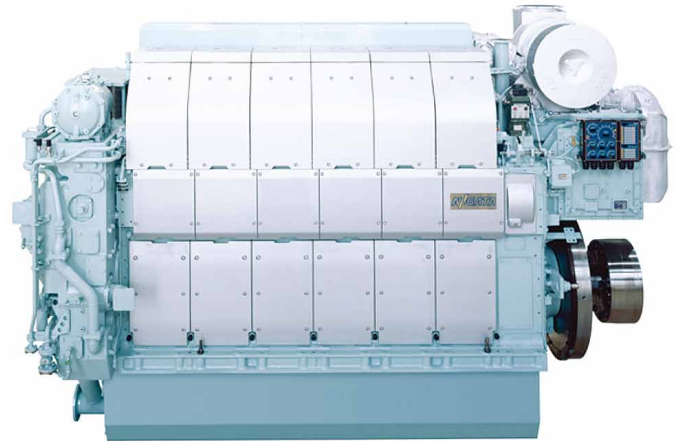


● Exhibits

- 1) Next generation NIIGATA DIESEL 28AHX
- 2) Scale model of Z-peller application.

● Features

- Z-peller: Big advantage features excellent bollard-pull and maneuverability, and easy maintenance with robust structure under a single responsibility throughout shafting with NIIGATA DIESEL.



● Outline of company

For over thirty years since its establishment in 1976 Shoyo Engineering Co., LTD has been intensively involved in manufacturing marine measuring devices.

Having started business with the development and manufacture of shaft horsepower meters, we have endeavored to offer highly durable high-accuracy products at reasonable prices.

We have sold a total of 1,200 units to date, and shaft horsepower meters remain our mainstay.

Besides shaft horsepower meters, we have succeeded after many years of effort to develop an engine pressure sensor that can be operated continuously. In the past, the monitoring of engine combustion pressure was possible only under restricted conditions, but our technology has achieved the goal of constant monitoring under any conditions.

● Main product

- Shaft horsepower meter
- Shaft thrust load meter
- Engine combustion pressure monitor

● Head office

1-10-1, Ohgami, Ayase-city, Kanagawa Pref., 252-1104, JAPAN

Tel: +81-467-70-3601

Fax: +81-467-70-3605

E-mail: office@shoyo-e.co.jp

● Exhibits

Shaft horsepower meter

Engine combustion pressure monitor (sensor)

● Features

Shaft horsepower meter

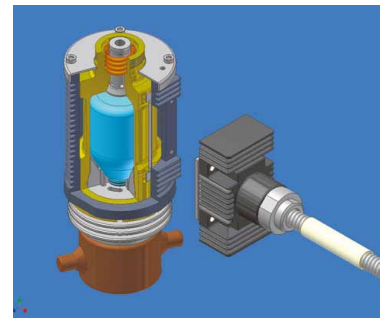
A shaft horsepower meter is an instrument designed to determine the horsepower delivered from the engine to the propeller on a vessel by measuring the torsion of the rotating shaft.

- High accuracy ($\pm 0.3\%$)
- Perfect reproducibility
- High durability
- Zero maintenance
- Light weight & compact size
- Smooth installation
- Easy zero point check



Engine combustion pressure monitor (sensor)

- Conducts simultaneous measurement of all cylinders
- Conducts sampling at every crank angle of 0.25 degrees and 0.5 degrees with the 2-cycle low-speed engine and the 4-cycle engine respectively
- Handles up to 1,200rpm
- Has a measurement accuracy of +1.2% and -0.5%



COMPREHENSIVE SUPPLIER OF ELECTRIC EQUIPMENT & MACHINERY FOR MARINE USE

Taiyo Electric Group, Taiyo Electric Co., Ltd and Sanshin Electric Corporation, have accumulated sales records since its founding nearly a century ago. Today, we deliver highly reliable electrical equipment for wide variety of vessels all over the world.



Thyristor Inverter type shaft generator system

Vessels equipped with our products range from small fishing boats and coastal ships to large vessels, including container ships, cruise ships, bulk carriers, VLCCs and LNGCs.

When developing new products, Taiyo group bears in mind the specific requirements of each individual vessel as well as the needs of the times, while pursuing the highest possible quality and technical standards. As a leading manufacturer of marine electrical equipment, we produce and market a diversity of system-based products, including thyristor type shaft generator systems and inverter control devices, in addition to general electrical machinery and equipment such as generators, motors, ventilators, switchboards, starters, main engine monitoring boards, searchlights and lighting fixtures.

Based upon our valuable experience and wealthy knowledge with the unique solution as "total supplier", Taiyo Electric Group has a favorable reception from shipyards & ship owners of various countries in the world.

● Main Products of Taiyo Electric Group

- Generators • Induction Motors • Ventilation Fans
- Switchboards & Starters • Alarm Monitoring System
- Inverter Speed Control Systems
- Thyristor Control Shaft Generating System
- Diesel Electric Propulsion System
- Searchlights • Lighting Fixtures
- Signal and Alarm Equipments
- Security and Guard Apparatus

SANSHIN LED Flood Light FDL-021L

- Almost same brightness with halogen lamp 300W Max. luminous intensity is 3300cd.
- Energy saving approx. 1/14 compare than halogen lamp 300W.
- Compact size and light weight Material of housing : Aluminum alloy die casting with anti-corrosion and marine painting
- Power supply : AC100/220V 50/60Hz
- Low temperature rising in continuous long use
- Protection grade : IP56
- Available to add the protection guard as option



LED Ceiling Light (LSN series)

- Height of fixtures is 39mm only
Save the cost of panel cutting for flush mounting type
- Long life : Average 50,000 hours
- Low power consumption
- Power supply : AC110/220V 50/60Hz
- Low temperature rising in continuous long use
- Glaring illumination restrained by special frosted diffuser
- Save energy and maintenance cost

● Head Office

Sanritsusha Bldg., 16-8, 1-chome, Uchikanda, Chiyoda-ku, Tokyo 101-0047 Japan

Taiyo Electric Co., Ltd.

Tel: +81-3-3293-3067 Fax: +81-3-3292-7012

URL: <http://www.taiyo-electric.co.jp>

Sanshin Electric Corporation

Tel: +81-3-3295-1831 Fax: +81-3-5259-8043

URL: <http://www.sanshin-electric.co.jp>

Liaison Office and/or Agent

Wilhelm Rump KG GmbH & Co.

Buchheisterstrabe 6 20457 Hamburg

Dr Kay Rump Tel: +40 3 17 84 20 Fax: +40 3 19 48 41



● Outline of company

Found in 1921 by Shozo Tanabe, Tanabe Pneumatic Machinery Company has many years experience in manufacturing compressors. Along with specializing in marine compressor packages Tanabe also design and build high pressure units used in industries such as steel, PET molding and Gas plant.

With years of experience and a high quality product range Tanabe have remained as one of the leading suppliers of marine air compressor with a market share of over 80% within the Japanese marine market.

● Main Products (marine use)

Marine compressors (starting/control/service/emergency air compressors, piston and screw type available)

● Head Office

2-14-6, Settsu, Osaka 566-0001, Japan

Tel: +81-6-6388-1337

Fax: +81-6-6388-4400

URL: <http://www.tanacomp.co.jp>

E-mail: info@tanacomp.co.jp

● Sole Agent for Spare Parts

Tanabe Compressor Co., Ltd.

15-24, Naganohigashi, Suita, Osaka 565-0816, Japan

Tel: +81-6-6380-8003

Fax: +81-6-6380-1101

E-mail: info@tanabe-intl.com

● Singapore Office

Tanabe Compressors Pte. Ltd.

2 Jurong East Street 21, IMM Building #04-30, Singapore 609601

Tel: +65-6562-6800

Fax: +65-6562-6811

E-mail: sales@tancomp.com.sg



TANABE New HG/HK series

● Features must have Benefits

FEATURES	BENEFITS
Tanabe Quality	Japanese Engineering → Specialist Marine Compressor Maker → 90years experience → Dependable support
Simplified design	Fewer Parts → Reduced stocking cost Common Parts → Differing models use same parts Compact Design → Smaller footprint - easily accommodated Wet Cylinder Liner → New block not required - reduced cost Easier Servicing → Reduced maintenance cost
No vibration	Simpler Installation → Reduced foundation costs No Resilient rubber mounting - reduced cost Flexible houses not required - reduced cost Less wear and tear → Reduced breakdown costs Longer working life → Reduced replacement costs More comfort → Better working conditions for crew

● Outline of Company

Yanmar, ever since its foundation, has been developing versatile energy and labor-saving diesel engines with output ranging from 2kW to 3,500kW through its unique diesel technologies, contributing to the community through energy conservation.

Our ceaseless efforts to produce ever higher quality products were rewarded with ISO9001 certification by Lloyds (LRQA) of Britain for the Amagasaki Plant of the Large Power Products Operations Division in July 1992, confirming international recognition for the excellent quality assurance system of the plant. The Large Power Products Operations Division of Yanmar has been a pioneer in tackling environmental problems and in June, 1997, the Amagasaki Plant became the first large industrial and marine diesel engine plant in Japan to be certified under ISO14001. The marine diesel engines produced by the Amagasaki Plant were also the first in Japan to clear the emission (NOx) control regulations of the IMO. The far-sighted efforts and excellent technologies of the Large Power Products Operations Division protect our environment and are highly evaluated in the world.

The Amagasaki Plant of Yanmar aims to ensure beautiful harmony with the global environment and to contribute widely throughout industry and society to create a better future for all.

● Head Office

1-32, Chayamachi, Kita-ku, Osaka, Japan.

Export Dept. Large Power Products Operations Division

1-1, Yaesu 2-chome, Chuo-ku, Tokyo 104-0028, Japan.

Tel: +81-3-3275-4909

Fax: +81-3-3275-4969

URL: <http://http://www.yanmar.co.jp>

● Overseas Subsidiary

Yanmar Europe B.V.

Brugplein 11, 1332 BS Almere-de Vaart, The Netherlands

Tel: +31-36-5493200

Fax: +31-36-5493209

URL: <http://http://www.yanmar.nl>

● Main Products

Marine propulsion and auxiliary diesel engines

● Exhibits

Marine auxiliary diesel engine, 6EY22(A)LW Cut Model



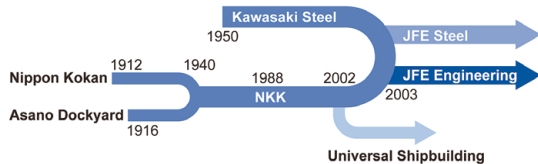
Model 6EY22(A)LW

● Features 6EY22(A)LW:

1. It is based on the two core concepts of raising Life Cycle Value and Harmony with global environment.
2. Contamination of combustion chamber with the use of heavy fuel oil is controlled by “contamination control technology” and “equipment of contamination resisting application”.
3. Compact design allows simplicity in the engine room layout.
4. The number of parts has been reduced, further increasing ease of maintenance.
5. With concentration of the pipe connections at the front of the engine, piping construction man-hour are reduced.
6. Low fuel consumption and correspondence to IMO Tier II were achieved at the same time by adopting the high pressure miller cycle system.

● Outline of Company

The history of JFE Engineering Corporation began when the company inherited the steel manufacturing technologies and shipbuilding technologies developed by NKK and Kawasaki Steel. These two fields of technology were fused over the course of 100 years, and are now used to produce resources, build cities, and preserve the environment. JFE Engineering is truly realizing a more abundant living environment and advanced industrial infrastructure as a force that “creates the foundation for the lives of people.”



- Industrial Machinery: Ballast water management system, marine diesel engine, gigantic cranes, etc.
- Energy: Pipeline, LNG depots, power plant, etc.
- Urban Environment: Waste treatment, water treatment, etc.
- Steel structures: Bridges, steel structures for buildings, etc.
- Recycling

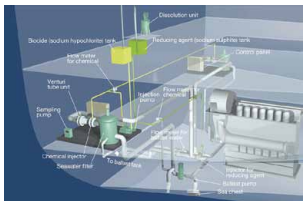
● Main products

Ballast water management system
Marine diesel engine

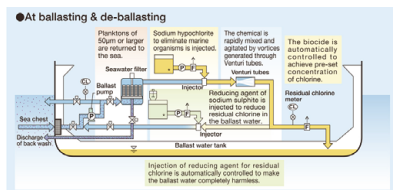
● Head office

2-1, Suehiro-cho, Tsurumi-ku, Yokohama 230-8611, Japan
Tel: +81-45-505-6538 Fax: +81-45-505-8960
URL: <http://www.jfe-eng.co.jp/en>

● Exhibits



An example of system layout



Ballast water flow

● Features

The feature of the system is ‘Simple, Sure and Safe with Low Price’ as follows:

- 1.Simple: The system is simple, compact and easy to install and operate.

- 2.Sure: High rate of elimination of aquatic organisms is possible due to combined use of precision filter, chemical and venturi tubes.
- 3.Safe: The biocide (sodium hypochlorite) we use is widely accepted for water and sewage treatment in the world. It is safe for use and easy for handling.
- 4.Low Price: The system is offered with a simple structure, minimum energy consumption and low price. The chemicals are widely available with low price. Maintenance cost is low as well.

● Liaison office and/or agent

Overseas Offices

China: Hong Kong Office

Unit 41B, 2/F Shui On Centre 6-8 Harbour road, Wanchai, Hong Kong

Tel: +852-2810-0604 Fax: +852-2810-4262

Myanmar: Yangon Office

c/o MiCasa Hotel, Room 8, 17 Kaba Aye Pagoda Road, Yankin Township, Yangon, Myanmar

Tel: +95-1-650966~7 Fax: +95-1-650964

UAE: UAE Office

PO Box 124830, Dubai, United Arab Emirates

Tel: +971-4-325-9906 Fax: +971-4-325-9906

Overseas Subsidiaries

Malaysia: JFE Engineering (M) Sdn. Bhd.

Unit C-13A-5, Block-C, Megan Avenue II, 12 Jalan Yap Kwan Seng, 50450 Kuala Lumpur, Malaysia

Tel: +60-3-2166-2121 Fax: +60-3-2166-2525

Indonesia: P.T. Permiko Engineering & Construction

Parama Building, Ground Floor JL. K. H. Achmad Dahlan 69 A-B, Kebayoran Baru, Jakarta 12130, Indonesia

Tel: +62-21-7253012~4 Fax: +62-21-7253015

China: JFE Engineering Consulting (Shanghai) Co., Ltd.

Rm.1501, Ruijin Mansion, No.205, Maoming South Road, Luwan, Shanghai 200020, China

Tel: +86-21-6473-0777 Fax: +86-21-6473-6613

Philippines: JFE Techno Manila, Inc.

23rd Floor, Wynsum Corporate Plaza 22F, Ortigas Jr. Road, Ortigas Center 1605, Pasig City, Metro Manila, Philippines

Tel: +63-2-635-7467~9 Fax: +63-2-635-7470

Singapore: JFE Engineering (S) Pte. Ltd.

1 Scotts Road, #21-05 Shaw Centre, Singapore 228208, Singapore
Tel: +65-6734-2482 Fax: +65-6734-1186

Contact point of JFE BallastAce:

Ship Machinery Division

Masanori Nagafuji (nagafuji-masanori@jfe-eng.co.jp)

Masahiro Teranishi (teranishi-masahiro@jfe-eng.co.jp)

● Outline of Company

NISHISHIBA, as a member of the Toshiba Group, has been pursuing the advancement of the control and efficient use of energy.

For the last half-century, with the combined force of power and electronics, we have been contributing to society in various ways.

We have made electric power generating system, electric systems for marine and offshore use, control systems, and industrial electric equipment systems.

● Main Products

- All kind of Generators and Motors
- All kind of Switchboards and Ventilation Fans
- Inverter control systems for Crane, Winch/Windlass, Aux. pump
- Shaft driven Generating Systems
- Electric Propulsion Systems

● Head office & Factory

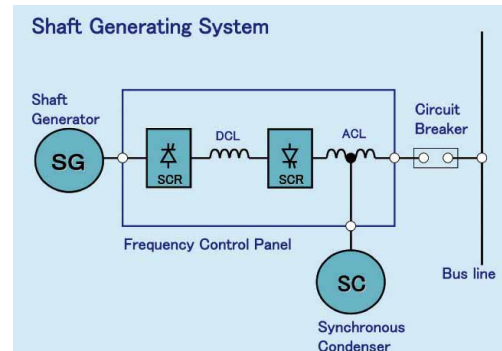
1000 Hamada, Aboshi-Ku, Himeji 671-1280, Japan
 Tel: +81-79-271-2448
 Fax: +81-79-271-2411
 URL: <http://www.nishishiba.co.jp>

● Kansai branch

Shin-Osaka Iida Building, 5-33, Nishimiyahara 1-chome, Yodogawa-Ku, Osaka 532-0004, Japan
 Tel: +81-6-6397-3461
 Fax: +81-6-6397-3475

● Exhibits

1) Shaft driven Generating Systems



2) Generators, Motors, Inverter control systems

3) Shaft driven Generating Systems

Features

- Energy Saving
- Less Maintenance
- Operation-support System with Fault Diagnosis
- Motoring mode
- Direct connection to 6.6kV main bus without step-up transformer
- Emergency Power Take Off (Option)

● Liaison office and/or agent

BARTHEL + LUDERS GMBH
 Norderelbstrabe 15, D-20457 Hamburg, Germany
 Tel: +49-40-3119-8150
 Fax: +49-40-3119-8111

● Outline of Company

Since established in 1946, BEMAC-Uzushio Electric has offered products, technology and services for many kinds of vessels. We offer Alarm Monitoring Systems, Switchboards, Power Management Systems, Electrical Equipment Construction and Design etc.

We at BEMAC-Uzushio have worked hard to provide our customer with Products and Services that meet our own strict quality and environment standards.

Now our quality & environment control has passed a tough international inspection and has received ISO9001, ISO14001 and OHSAS18001 certification.

● Main Products

Manufacturing

- Display Technologies
- Power-distribution Technologies
- Communications Technologies
- Integrated Automation System Technologies

Electric Engineering

- Electrical Outfitting works for ships Merchandise
- Electrical cable for ships
- Radio / radar for ships
- Power generators for ships

● Main Office

1520 Kuo, Onishi-cho, Imabari-city, Ehime Pref. 799-2294, Japan

Tel: +81 898 53 6361

Fax: +81 898 53 2266

E-mail: info@bemac-uzushio.com

URL: <http://www.bemac-uzushio.com>

● Exhibits

Alarm and Monitoring System Complying with FBB

● Liaison Office and/Or agent

Fuji Trading (Marine) B.V.

Sluisjesdijk 109, 3087 AE Rotterdam, The Netherlands

Tel: +31 10 429 8833

Fax: +31 10 429 5227

Nippon Diesel Service GmbH

Hermann-Blohm-Str. 1, D-20457 Hamburg, Germany

Tel: +49 40 31 1323

Fax: +49 40 31 1598

Regal Mare Inc

1, Kanari Str. & 79, Akti Miaouli 185 37 Piraeus, Greece

Tel: +30 210 42 83 500

Fax: +30 210 42 83 580

ACTech Ltd

73 Etolikou Str, 185 45 Piraeus-Greece

Tel: +30 210 46 30 825

Fax: +30 210 46 30 725

