



# SEMINAR ON JAPANESE MARINE EQUIPMENT

January 27 15:00 – 18:00

&

# COCKTAIL RECEPTION

January 27 18:00 – 20:00

## MARMARA SALON (2nd level)

### Time table

**【PROGRAM】**  
Language; English

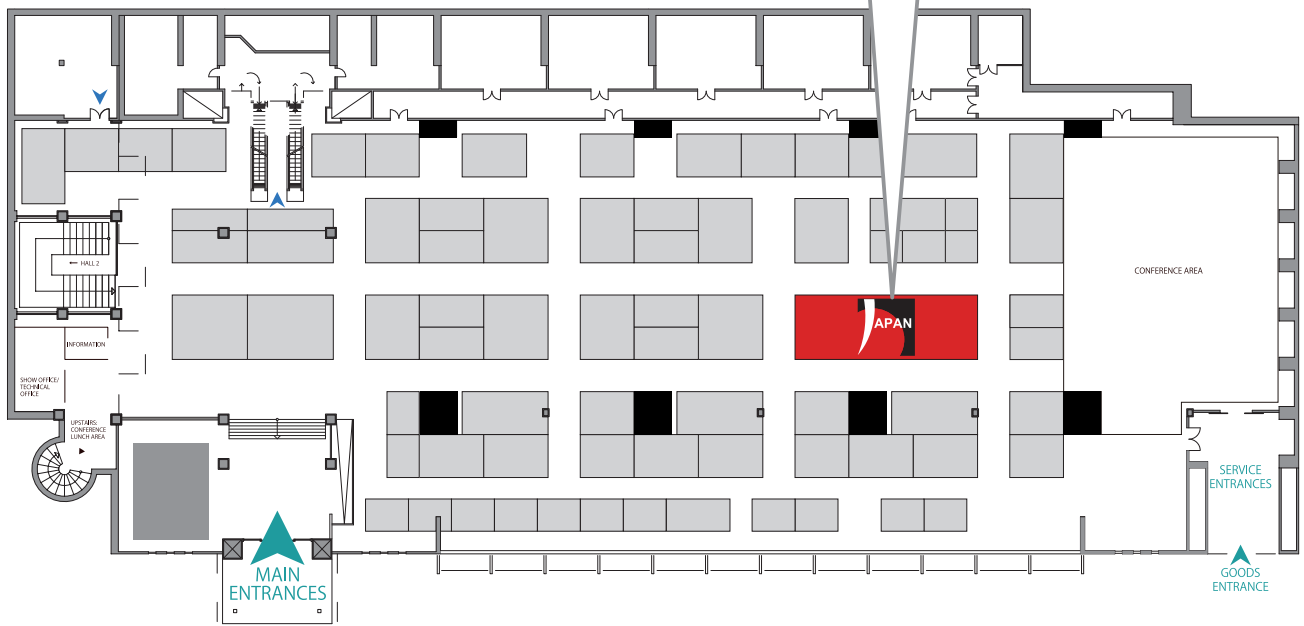
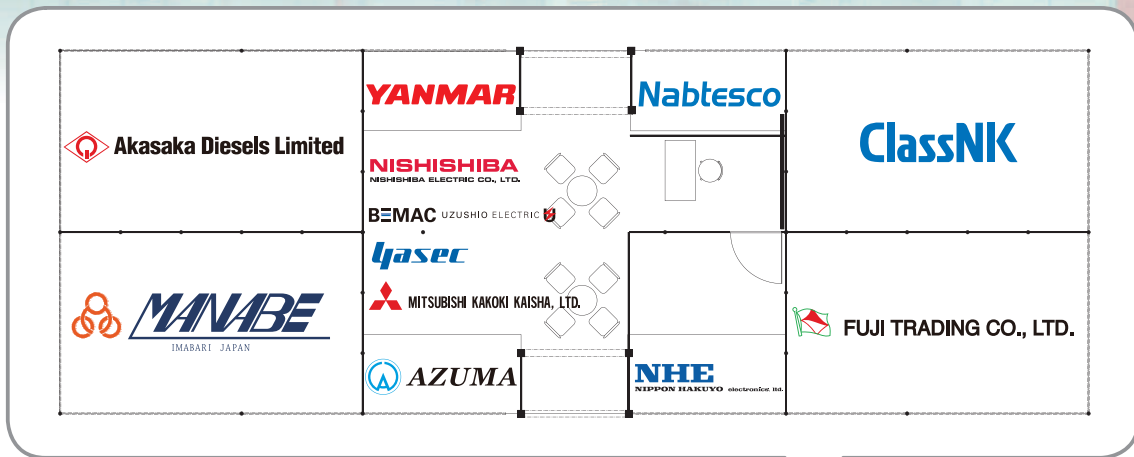
15:00 – 15:20	Opening address
15:20 – 15:45	MANABE ZOKI CO., LTD.
15:45 – 16:10	AKASAKA DIESELS LIMITED
16:10 – 16:35	NAKASHIMA PROPELLER CO., LTD.
-----	Break-----
16:45 – 17:10	NIPPON HAKUYO ELECTRONICS, LTD.
17:10 – 17:35	MITSUBISHI KAKOKI KAISHA, LTD.
17:35 – 18:00	AZUMA KAKO CO., LTD.

## DOLMABAHCE SALON (1st level)

18:00 – 20:00 COCKTAIL RECEPTION

SMM Istanbul floor

# JAPAN PAVILION



4

**Akasaka Diesels Limited**

 **Akasaka Diesels Limited**

5

**AZUMA KAKO CO., LTD.**

 **AZUMA**

6

**FUJITRADING CO., LTD.**

 **FUJITRADING CO., LTD.**  
MARINE SUPPLY AND ENGINEERING

7

**MANABE ZOKI CO., LTD.**

 **MANABE**  
SHIBUKAWA JAPAN

8

**mitsubishi kakoki kaisha, LTD.**

 **mitsubishi kakoki kaisha, LTD.**

9

**NABTESCO CORPORATION**

**Nabtesco**

10

**NIPPON HAKUYO electronics, ltd.**

**NHE**  
NIPPON HAKUYO electronics, ltd.

11

**NISHISHIBA ELECTRIC CO., LTD.**

**NISHISHIBA**  
NISHISHIBA ELECTRIC CO., LTD.

12

**UZUSHIO ELECTRIC CO., LTD.**

**BEMAC** UZUSHIO ELECTRIC 

13

**YANMAR CO., LTD.**

**YANMAR**

14

**YAMASHINA SEIKI CO., LTD.**

**lyasec**

15

**NIPPON KAIJI KYOKAI**

**ClassNK**

**NAKASHIMA PROPELLER CO., LTD.**

 **NAKASHIMA PROPELLER**

AKASAKA DIESELS LIMITED is a Japanese leading manufacturer of marine diesel engine for various kinds of vessels.

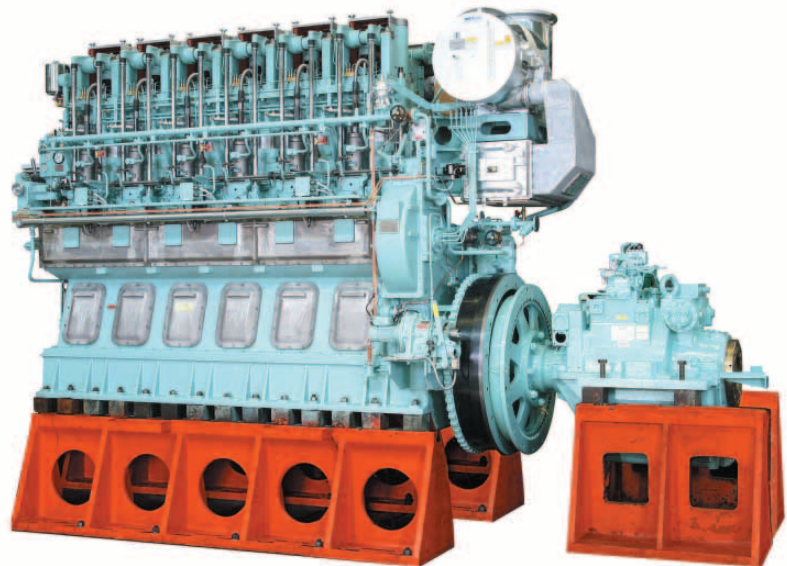
We started engine repair business in Yaizu, a town of fishery in Shizuoka in 1910 and since that time we have been manufacturing a lot of engines for fishing boat, magnifying our business field along with the development of domestic fishery. Subsequently, we extended our product list for the use of merchant vessels like cargos, tankers and bulk carriers.

Now our products are known worldwide by their high-reliability and superior performances based on authentic technologies, which is being succeeded over generations since our foundation. However the market situation and customer demand are always changing and they never let us stop from challenging to the task of further development. We will always support you with customer creed and sincerity, which will surely meet your expectation.

## Main Products

**4 Stroke engine:** Akasaka Diesel Engine  
TYPE A / AX (1,103kW~3,309kW)  
TYPE K / E (956kW~1,618kW)  
TYPE U (1,838kW~2,427kW)

**2 Stroke engine:** Akasaka-Mitsubishi UE Diesel Engine licensed by Mitsubishi Heavy Industries, Ltd.  
UEC50LSE / UEC45LSE / 40LSE / 35LSE (4,350kW~13,280kW)  
UEC50LS II / UEC43LS II / UEC37LS II / UEC33LS II (2,830kW~11,560kW)



### ● Product Features

#### Akasaka 4 stroke Diesel Engine

- Turbo charged diesel engine with in-line 6 cylinders
- Long stroke for high efficiency
- Two valve system for high reliability
- Cage type valve (intake, exhaust & starting air valve) for easy maintenance
- Compatible with heavy fuel oil

#### Akasaka-Mitsubishi UE Diesel Engine

- High reliability as an universal brand
- Low specific fuel oil consumption
- High propeller efficiency
- Compatibility with low-quality fuel oil
- Easy maintenance
- Compact design

## Inquiries

### Head Office (Overseas Business Group)

14th Floor, South Tower, Yurakucho Denki Bldg., 1-7-1 Yurakucho, Chiyoda-ku, Tokyo 100-006, Japan  
TEL : +81-3-6860-9081 FAX : +81-3-6860-9083  
E-mail : [info@akasaka.co.jp](mailto:info@akasaka.co.jp)



# AZUMA KAKO CO., LTD

[http://www.azu-net.co.jp/azuma\\_kako/index.html](http://www.azu-net.co.jp/azuma_kako/index.html)



Azuma Kako. Co, Ltd. was established on 1935 in Tokyo/Japan as specialist for engine components welding repair. AZUMA is renowned for helping ocean-farer vessels to recondition and repair damaged engine components. This Japanese company soon expanded its network and marks the start of it's workshops in Kobe, Onomichi, Taiwan and Singapore.

Our company is committed in achieving professional excellence by fulfilling customers needs and in turn satisfying and exceeding their expectations. It aims to carry out responsibilities and obligations thru fast and prompt response and give customers fresh information and techniques as approved by engine makers.

Please refer certificates from Engine makers as attached.



Reconditioning of Marine Diesel Engine Components such as Piston Crown, Cylinder Cover, Exh. v/v housing, spinde /seat, Connecting Rod, Fuel Injection parts as per authorized by Japanese Engine makers as attached certificates.



## Inquiries

**Azuma Singapore**  
TEL : 65-6861-4677  
E-mail : sales@azuma.com.sg  
Contact Person: Mr. SAKAI YUKINORI

# FUJITRADING CO., LTD

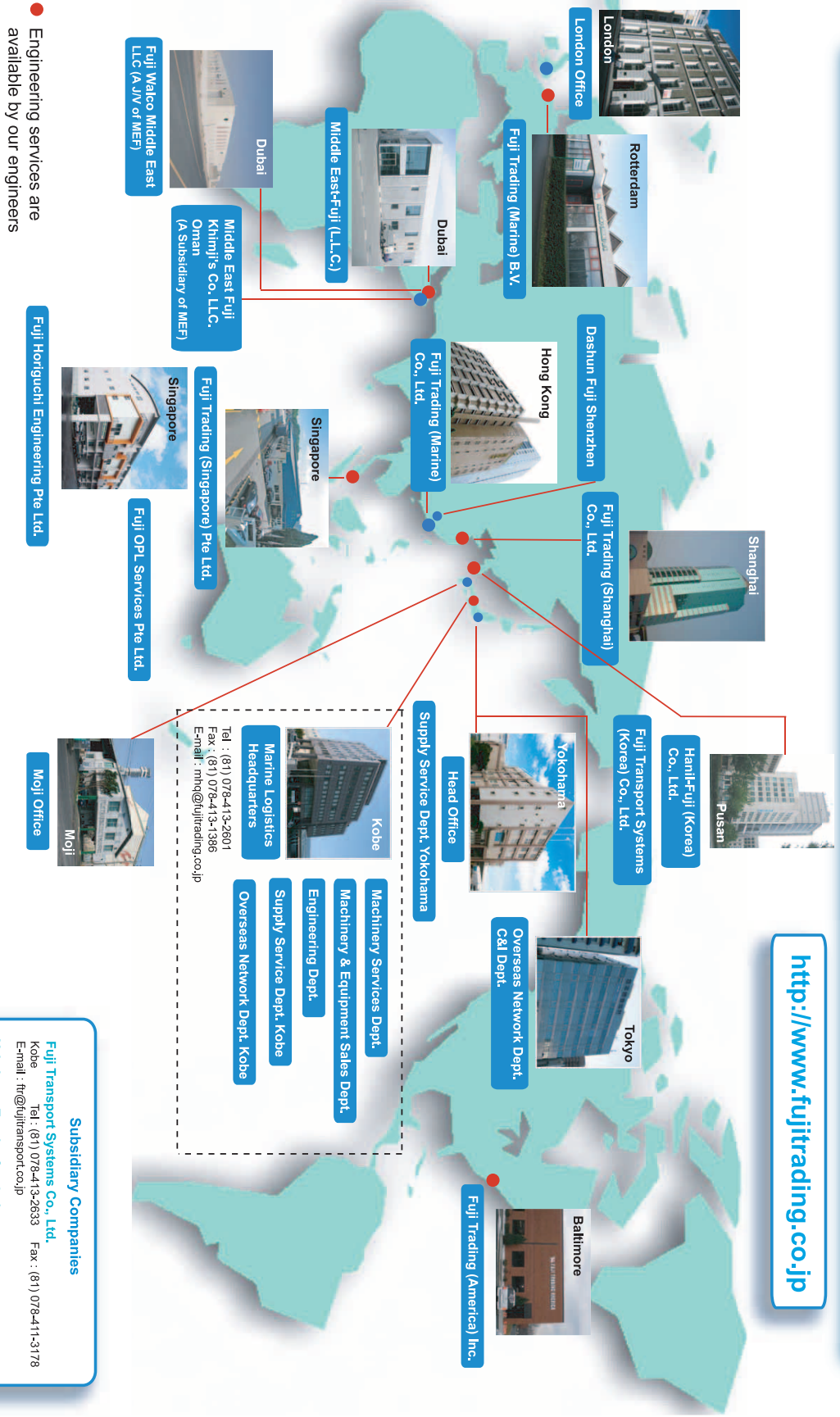
<http://www.fujitrading.co.jp/eindex.htm>



**Head Quarters** 6, Fukaehama-machi, Higashinada-ku, Kobe, Japan 658-0023

## Round the Clock Services by Global Techno Network

<http://www.fujitrading.co.jp>



**Subsidiary Companies**

**Fuji Transport Systems Co., Ltd.**  
Kobe  
Tel : (81) 078-413-2833 Fax : (81) 078-411-3178  
E-mail : ft@fujitransport.co.jp

**Yokohama Tsusho Co., Ltd.**  
Yokohama Tel : (81) 045-621-8598 Fax : (81) 045-621-8662  
E-mail : info@yokohata.co.jp

# MANABE ZOKI COMPANY LIMITED

<http://www.manabezoki.co.jp/en/index.html>



Manabe Zoki Company Limited is one of the most authentic Japanese manufacturers which has been specializing in producing high quality DECK CRANE and DECK MACHINERY for more than 50 years in Japan. Manabe is capable of designing and producing SINGLE DECK CRANE, TWIN DECK CRANE, HOSE HANDLING CRANE and WINDLASS, MOORING WINCH, RAMP WINCH, CAPSTAN, ANCHOR HANDLING & TOWING WINCH. Manabe has many experiences to deal with not only domestic market but also many foreign countries to export our products all over the world, which have been giving customers full satisfaction. A consistent attitude toward innovating

new technologies for products made Manabe the most advanced and reliable deck machinery manufacturer in the world. For more detailed information, please visit our booth or web site. <http://www.manabezoki.co.jp/en/index.html>



Manabe Zoki Company Limited has newly developed deck crane named E.H crane. E.H stands for Ecology & High performance. By controlling hydraulic power by inverter system, it makes for high efficiency, saving energy up to 20% at maximum and lower operation noise compared to a conventional electro-hydraulic crane type. E.H crane is the next generation's deck crane which is eco-friendly to the earth and makes both loading and unloading time faster than usual. We look forward to your visiting at our booth.

## Inquiries

TEL : +81-898-41-9217

E-mail : [eigyou\\_2@manabezoki.co.jp](mailto:eigyou_2@manabezoki.co.jp)

Contact Person: Mr. KOSUKE HAMADA



# MITSUBISHI KAKOKI KAISHA, LTD.

<http://www.kakoki.co.jp/english/>



Mitsubishi Kakoki Kaisha, Ltd. (MKK) was established in 1935 financed by several companies in the Mitsubishi Group for the purpose of promoting the production of chemical machinery and equipment in Japan. Mitsubishi oil purifier, sludge separator and filters have been contributing to the considerable saving in maintenance and operation labor for the ship.



Mitsubishi Selfjector is the major brand of oil purifier in the world. We achieved to supply more than 86,000 units. Our latest model, "SJ-G Series" provides "High reliability"& "Higher particulate removal performance" in purification for low grade of heavy fuel oil.

## Inquiries

### **Mitsubishi Kakoki Kaisha, Ltd. / Machinery Sales Dept.**

1-2, Miyamae-cho, Kawasaki-ku, Kawasaki, Kanagawa, 210-0012, Japan  
TEL : +81-44-246-7350 FAX :+81-44-246-7352

### **MKK EUROPE B.V. (subsidiary company of MKK in Europe)**

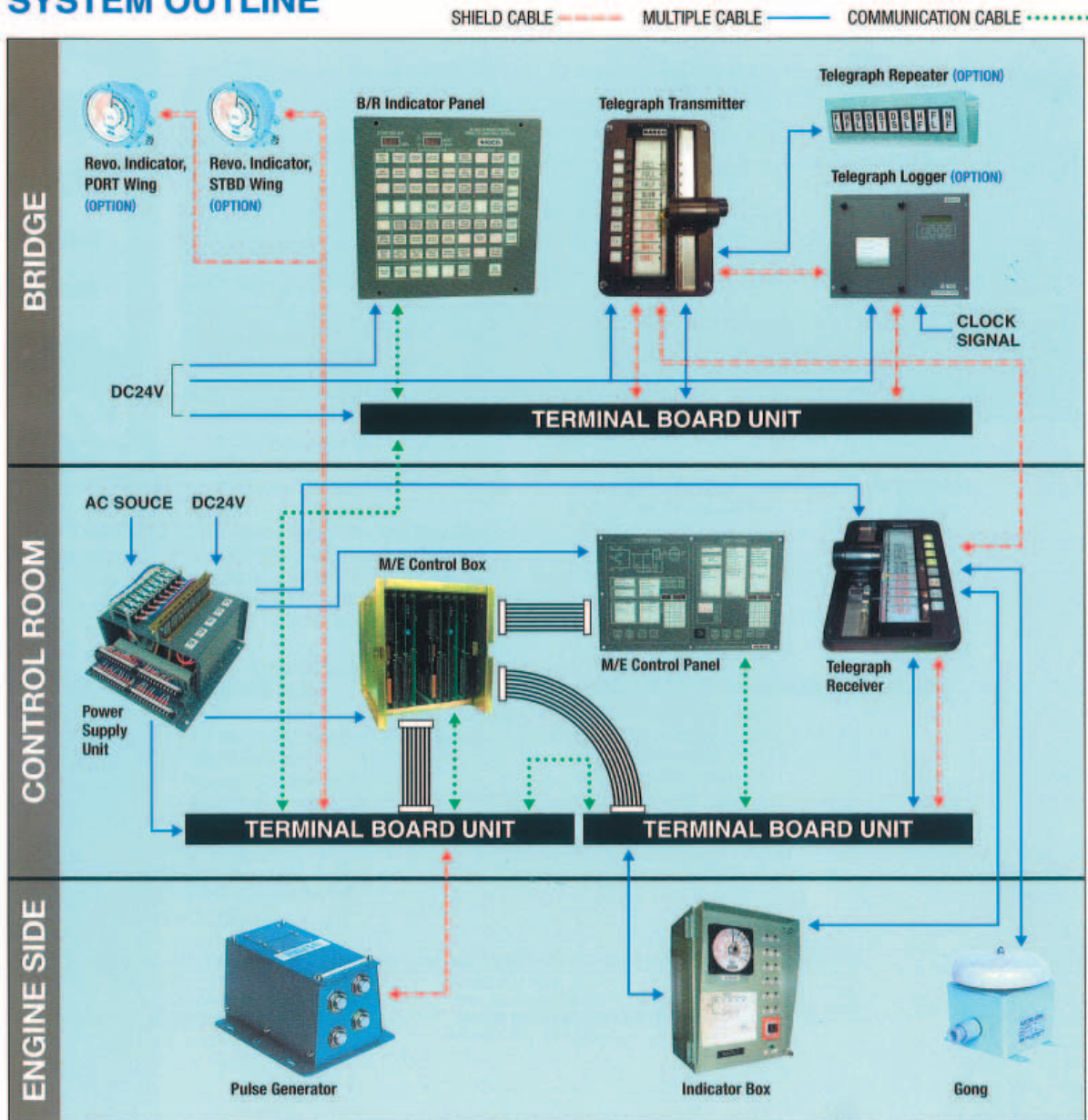
Spinnerij 41, 1185ZS Amselveen, The Netherlands  
TEL : +31-20-4560666 FAX : +31-20-4560635



NABTESCO Corporation has been the world's leading manufacturer of motion control systems for Air, Land and Marine field applications.

NABTESCO has played a leading role in the total control system in marine field, especially M-800 series main engine remote control system and MG-800 digital governor system has enjoyed a good reputation among customers the world over. In addition, it has set up three main bases service center in Japan, Singapore and the Netherlands, thus expanding the global service network and providing finely-tuned after-sales services.

## SYSTEM OUTLINE



### Main Products

- Remote Control System for marine diesel engine, CPP, Thruster and steam turbine
- Digital Governor System for marine diesel engine
- Telegraph System
- Equipment for Electronically Controlled Engine

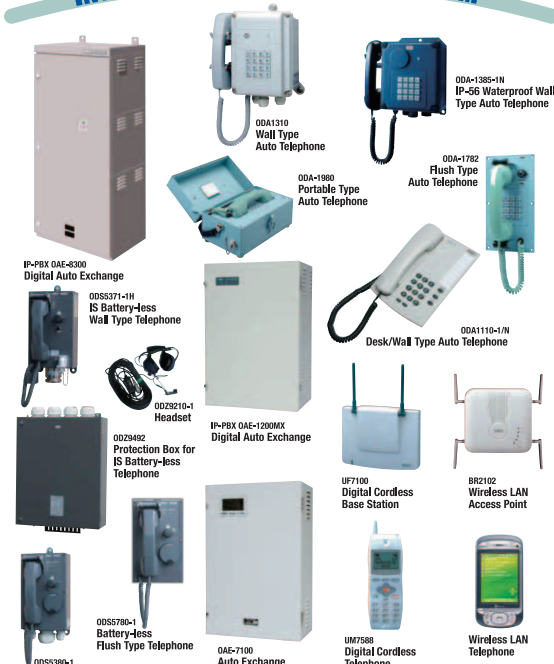
### Inquiries

E-mail : [newbuilding@nabtesco.com](mailto:newbuilding@nabtesco.com)  
(newbuilding only)

NHE was founded in the year 1981 as a company focussing on system engineering and sales of shipborne equipments in OKI group which is one of the leading manufacturers in the field of Information Technology and Network Solutions. Since then, NHE has been providing to Japan domestic market and all over the world as well with shipborne inter-communication equipments, fire detection/alarm equipments and satellite data acquisition/processing system by utilizing OKI group's rich and high level technology resources with additional unique technical expertise and know-how of its own. NHE does not manufacture the equipments by ourselves. Instead, NHE is outsourcing them by teaming up and under the partnership with Shizuoka OKI electric for Inter-communication equipments, and OKIDENKI BOSAI for marine fire detection/alarm systems and we have achieved sound supply record of these products.

## ADVANCED TECHNOLOGY IN MARINE DATA & INTERCOM SYSTEMS

### INTERNAL COMMUNICATION SYSTEM



### MARINE CLOCK



### CARGO LOADING COMPUTER



### PUBLIC ADDRESS SYSTEM



### FIRE DETECTION & ALARM SYSTEM



NHE was founded in 1981 as a company that bears system engineering service and sales of electronic shipboard equipment of OKI group that is the leading company in the field of Information Technology and Network Solution. Since then, NHE has been providing not only domestic market but also world market with marine communication, fire detection/alarm equipments and satellite data acquisition/processing system by utilizing OKI group's rich and high level technical resources with additional unique technical expertise and know-how of its own. As a fables manufacturer with our foundries, Shizuoka OKI Electric for marine communication equipment and OKI DENKI BOSAI for marine fire detection/alarm system, we have developed an unparalleled ability to provide marine communication solutions and fire detection/alarm systems. In order to cope with the rapidly evolving needs in the IT age, NHE provides a variety of products such as a shipboard communication systems, safety equipment against hazards, shipboard broadcast and steering guidance system, marine fire detection/ alarm system, quartz clock, monitor CCTV system, viewing/listening common use TV system, and computer system for cargo loading, etc, all of which are installed on board that sail in the seven seas of the world.

### Inquiries

TEL : +81-45-453-6911  
 FAX : +81-45-453-6910  
 E-mail : y.hayashi@nhe.co.jp  
 Contact Person: Mr. YASUO HAYASHI  
 (General Manager Sales Dept. II)

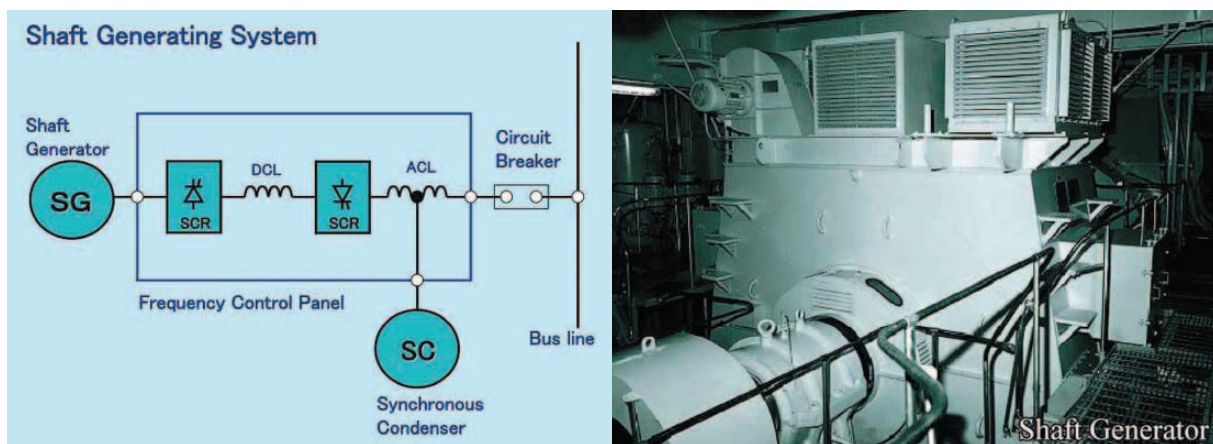
NISHISHIBA, as a member of the Toshiba Group, has been pursuing the advancement of the control and efficient use of energy. For the last half-century, with the combined force of power and electronics, we have been contributing to society in various ways. We have made electric power generating system, electric systems for marine and offshore use, control systems, and industrial electric equipment systems.

## Main Products

- All kind of Generators and Motors
- All kind of Switchboards and Ventilation Fans
- Inverter control systems for Crane, Winch/Windlass, Aux. pump
- Shaft driven Generating Systems
- Electric Propulsion Systems

## Exhibits

### 1) Shaft driven Generating Systems



### 2) Generators, Motors, Inverter control systems

### 3) Shaft driven Generating Systems

- Features
- Energy Saving
  - Less Maintenance
  - Operation-support System with Fault Diagnosis
  - Motoring mode
  - Direct connection to 6.6kV main bus without step-up transformer
  - Emergency Power Take Off (Option)

## Inquiries

### Head office & Factory

1000 Hamada, Aboshi-Ku, Himeji 671-1280, Japan  
TEL : +81-79-271-2448 FAX : +81-79-271-2411

### Kansai branch

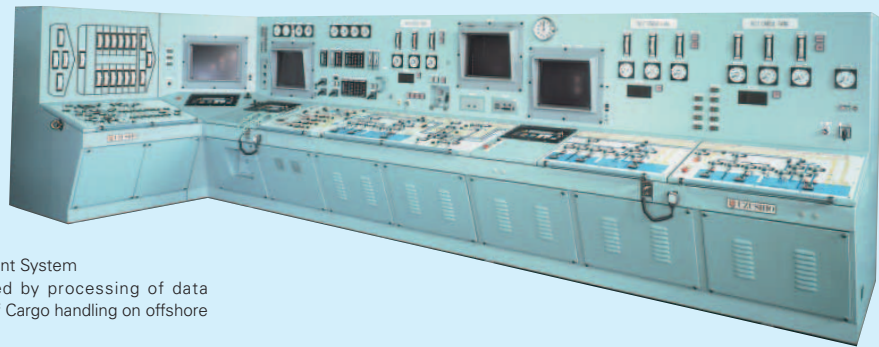
Shin-Osaka Iida Building, 5-33, Nishimiyahara 1-chome,  
Yodogawa-Ku, Osaka 532-0004, Japan  
TEL : +81-6-6397-3461 FAX : +81-6-6397-3475

### Liaison office and/or agent

BARTHELS + LUDERS GMBH  
Norderelbstrabe 15, D-20457 Hamburg, Germany  
TEL : +49-40-3119-8150 FAX : +49-40-3119-8111



We, BEMAC-Uzushio Electric Co., Ltd. are a Japanese registered entity specialized on manufacturing ship's electrical Power Distribution, Control & Monitoring System, Electrical Works on Marine and Land & Sales on Radio & Communication Equipments. Our product lines are Main Switch Boards, Emergency Switch Boards, Group Starter Panels, Engine Control Console, Data Logger (AMS) and etc. We have been in the business for 64 years. From designing of single line diagram of ship cabling to manufacturing electrical panels of producing 272 MSB and Monitoring Systems per year at our main factory in Shikoku, Japan. This is equivalent to produce at least one product per each working day. As a result, we have more than 45.4% market share in domestic Japan, Our products are serving on more than 5000 vessels on 7 seas at present. To give reliable and safe journey, BEMAC provides global maintenance services for worldwide clients. Our after service network has more than 15 overseas partner companies spread around the world. Our company policy in after service is to response to clients request within 24hr. We will not let you wait but to give you a rapid response to your request. We appreciate very much for giving us your precious time.



### Cargo Control Console

CARGO Control Console: CARGO Management System  
Effective Cargo handling can be achieved by processing of data corresponding to IT revolution of the facility of Cargo handling on offshore and using current technology.



### Main Switchboard

Main Switchboard : Power Distribution System  
Power Distribution System, which has high reliability and safety based on a lot of experiences and high technological skills.



### Group Starter Panel

Group Starter Panel  
Organized units with uniform size of width 350mm.  
Capacity up to 110kW (from 0.4kW)



### Wheelhouse Group Panel

Wheelhouse Group Panel  
Navigation Light Display Panel  
and Steering Alarm Panel are standarsized.

### Inquiries

Contact Person: Mr. HIDEHIRO MANABE

General Manager, Global Marine Marketing & Sales Group

105 Noma, Imabari-city, Ehime Pref. 794-8525, Japan

TEL : +81 898 25 8290

FAX : +81 898 25 8291

E-mail : [sales@bemac-uzushio.com](mailto:sales@bemac-uzushio.com)



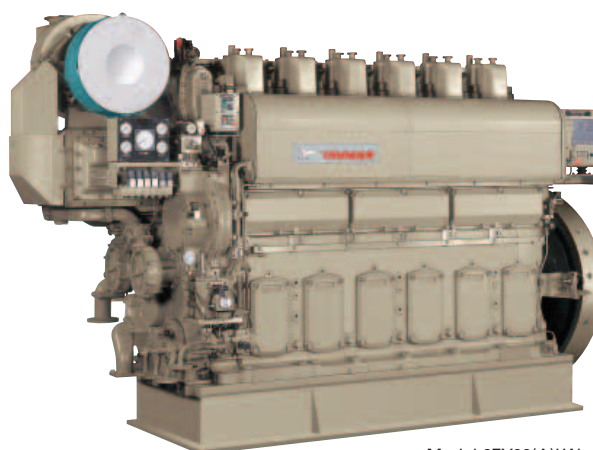
Yanmar, ever since its foundation, has been developing versatile energy and labor-saving diesel engines with output ranging from 2kW to 3,500kW through its unique diesel technologies, contributing to the community through energy conservation.

Our ceaseless efforts to produce ever higher quality products were rewarded with ISO9001 certification by Lloyds (LRQA) of Britain for the Amagasaki Plant of the Large Power Products Operations Division in July 1992, confirming international recognition for the excellent quality assurance system of the plant. The Large Power Products Operations Division of Yanmar has been a pioneer in tackling environmental problems and in June, 1997, the Amagasaki Plant became the first large industrial and marine diesel engine plant in Japan to be certified under ISO14001. The marine diesel engines produced by the Amagasaki Plant were also the first in Japan to clear the emission (NOx) control regulations of the IMO. The far-sighted efforts and excellent technologies of the Large Power Products Operations Division protect our environment and are highly evaluated in the world.

The Amagasaki Plant of Yanmar aims to ensure beautiful harmony with the global environment and to contribute widely throughout industry and society to create a better future for all.

## Main Products

Marine propulsion and auxiliary diesel engines



Model 6EY22(A)LW

## Features

6EY22(A)LW:

1. It is based on the two core concepts of raising Life Cycle Value and Harmony with global environment.
2. Contamination of combustion chamber with the use of heavy fuel oil is controlled by "contamination control technology" and "equipment of contamination resisting application".
3. Compact design allows simplicity in the engine room layout.
4. The number of parts has been reduced, further increasing ease of maintenance.
5. With concentration of the pipe connections at the front of the engine, piping construction man-hour are reduced.
6. Low fuel consumption and correspondence to IMO Tier II were achieved at the same time by adopting the high pressure miller cycle system.

## Inquiries

### Head office

#### Export Dept. Large Power Products Operations Division

TEL : +81-3-3275-4909

FAX : +81-3-3275-4969

### Overseas Subsidiary

#### Yanmar Europe B.V.

TEL : +31-36-5493200

FAX : +31-36-5493209

The mechatronics that we have been cultivated for years as the key-technology contribute to 'Saving resource' and 'Energy conservation'.

We offer the market new Lubricating system, Exhaust valve grinder, Rudder bearing boring machine, and various Heat exchangers that agree with needs of the shipbuilding industry, and take pride in a high share.

Moreover, from our 60-year experience, we provide special purpose machine tools for shipbuilding and miscellaneous engine building processes.

We will continuously try to meet the future needs of shipbuilding industry, taking on the challenge of further development.

## MGO (marine gas oil) Cooler

### Square Cooler

- 1: This is a tube type cooler which can withstand strong pulse pressures (spill pressures) generating in the main fuel pipe. A pulse pressure buffer plate is provided at the fuel oil exit.
- 2: It has the one pass top-to-bottom down-flow structure that inhibits the fuel oil sludge from accumulating.
- 3: It has also a flat structure which provides stable overall heat transfer coefficient.
- 4: It employs a floating head for easy cleaning and disassembly.
- 5: Fuel oil is cooled from high to low temperatures by circulating low temperature water.
- 6: Chiller unit is fabricated compactly by employing the double pipes with special grooves on the condenser and the evaporator.



## Fuel Pilot

- 1: This is a temperature control type and fuel oil mixing ratio regulating type unit which has been employed by more than 100 domestic vessels, calling to and departing from ports frequently. It changes over the supply fuel from HFO (heavy fuel oil) 100% to MGO (marine gas oil) 100% by changing the blend oil ratio rectilinearly over a set time (20, 30 or 40 minutes).
- 2: It brings down the temperature of main engine fuel oil to the operating temperature of MGO over 60 minutes to 3 hours, starting simultaneously with the change over from HFO to MGO. It controls the pre-main engine fuel oil heater and the MGO cooler collectively. Time required for bringing down from the HFO heating temperature to the MGO cooling temperature is determined based on the volume in the fuel oil circulation line and the engine's fuel consumption.
- 3: It is changed over in the same way also from MGO (marine gas oil) 100% to HFO (heavy fuel oil) 100%.



### Inquiries

Contact Person: ATSUSHI SAITO (MR.)  
TEL : +81-3-3256-6751  
FAX : +81-3-3256-6756  
E-mail : a.saito@yasec.co.jp

## The World Leader in Ship Classification

As the world's leading classification society, Nippon Kaiji Kyokai, better known as ClassNK, develops the rules that safeguard life, property and the marine environment. With some 180 million gross tons on our register, ClassNK is the world's largest classification society, helping ensure the safety of some 20% of the world fleet. We are also the leading classification society in Turkey, classing 25% of all Turkish owned tonnage.

ClassNK offers a full range of classification services, including class and statutory surveys, audits and registration for ISM/ISPS, and ISO 9001/14001 & OSHAS 18001 certification. We are authorized to provide statutory surveys on behalf of more than 100 flag administrations around the globe, including the Turkish flag, and registration with ClassNK is recognized by insurers, flag states, and port state control agencies around the world.



## Global Service

Based in Japan, ClassNK is a global organization with more than 115 exclusive surveyor offices around the world, and six Plan Approval Centers in the world's leading shipbuilding regions including Turkey. Our surveyors are on call at ports and shipyards around the world, ensuring that all of our services are available 24 hours a day, whenever and wherever you need us.



### Inquiries

#### Istanbul Office & Plan Approval Center

TEL : +90-216-474-4421

FAX : +90-216-474-4424

E-mail : [it@classnk.or.jp](mailto:it@classnk.or.jp)



Japan Marine Equipment Association

## ■ Head Office

6th Floor, Kaiyo Senpaku Building, 15-16, Toranomom 1-chome,  
Minato-ku, Tokyo 105-0001, Japan  
Tel: +81-3-3502-2041 Fax: +81-3-3591-2206  
E-mail: [info@jsmea.or.jp](mailto:info@jsmea.or.jp) URL: <http://www.jsmea.or.jp>

## ■ Overseas Offices

### ● Japan Ship Centre (JETRO), Ship Machinery Department

2nd Floor, 6 Lloyd's Avenue, London, EC3N 3AX, UK  
Tel: +44-207-680-9456 Fax: +44-207-680-9416  
<http://www.jsc.org.uk>

### ● JETRO Shanghai

Ship Machinery Department  
21st Floor Shanghai International Trade Centre, 2201,  
Yan An Xi Road, Shanghai 200336, People's Republic of China  
Tel: +86-21-6270-0489 Fax: +86-21-6270-0499

### ● JETRO Singapore

Ship Machinery Division  
Hong Leong Building, #38-05 16 Raffles Quay,  
SINGAPORE 048581  
Tel: +65-6429-9522 Fax: +65-6224-1169