



JAPAN

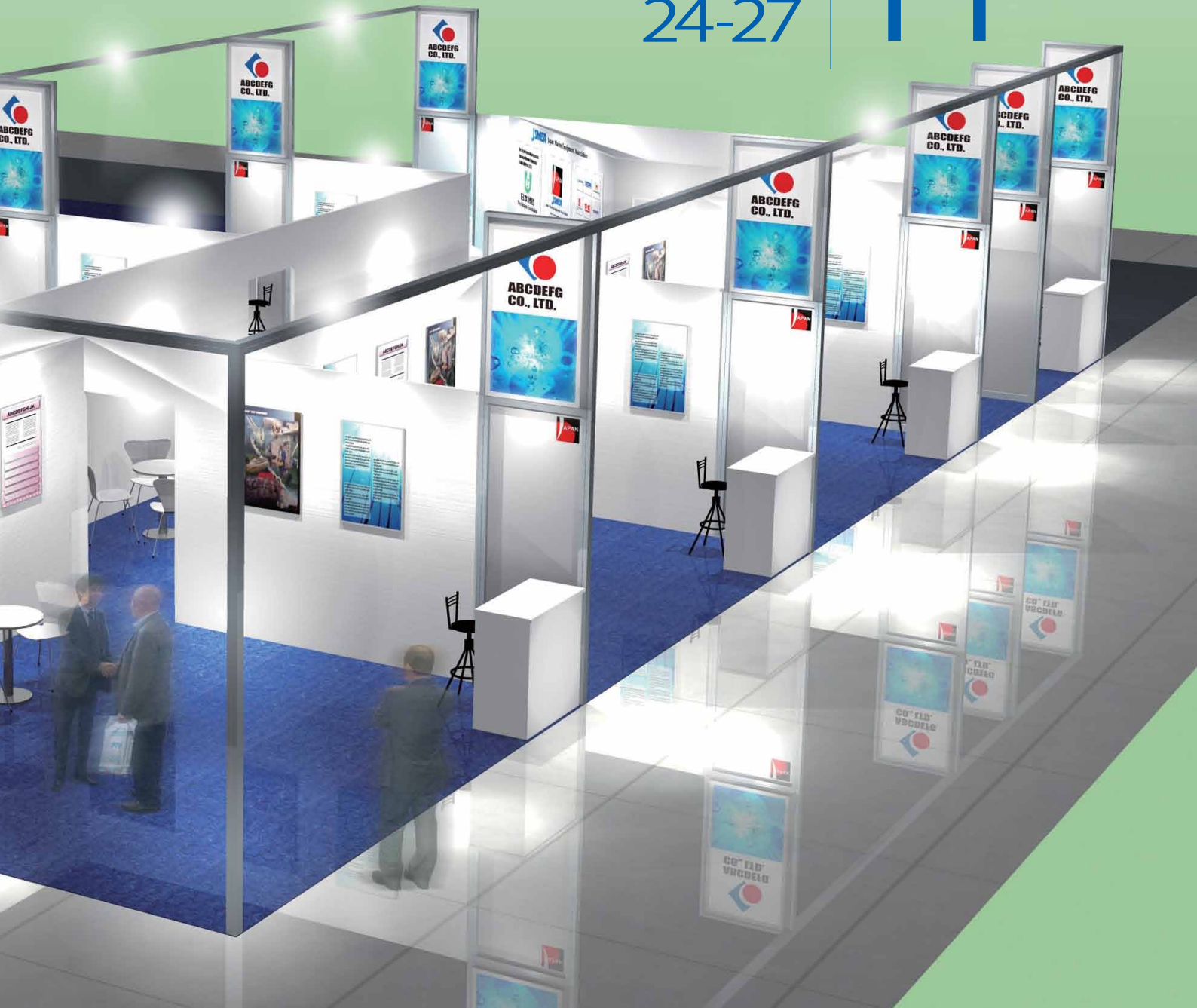
JSMEA

Japan Marine Equipment Association

NOR  SHIPPING

OSLO
MAY
24-27

20
11



Exhibitors

AZUMA ENGINEERING (S) PTE LTD a subsidiary of Azuma Kako., Ltd. (Japan)	4
Kawasaki Heavy Industries, Ltd.	5
Daihatsu Diesel Mfg. Co., Ltd.	6
Niigata Power Systems Co., Ltd.	7
Fuji Trading Co., Ltd.	8
HSN KIKAI KOGYO CO., LTD. (Heishin Pump Works Co., Ltd.)	9
Yanmar Co., Ltd.	10
MOL Techno-Trade, Ltd.	11
Taiyo Electric Co., Ltd.	12
Nabtesco Corporation	13
Nishishiba Electric Co., Ltd.	14



JSMEA

Japan Marine Equipment Association

● Head Office

6th Floor, Kaiyo Senpaku Building, 15-16,
Toranomon 1-chome, Minato-ku, Tokyo 105-0001, Japan
Tel: +81-3-3502-2041 Fax: +81-3-3591-2206
E-mail: info@jsmea.or.jp
URL: <http://www.jsmea.or.jp>

● Overseas Offices

• Singapore

JETRO Singapore, Ship Machinery Division
Hong Leong Building, #38-01 to 05 #37-02A
16 Raffles Quay, SINGAPORE 048581
Tel: +65-6221-8174 Fax: +65-6224-1169

• Shanghai

JETRO Shanghai, Ship Machinery Department
21st Floor, Shanghai International Trade Centre,
2201, Yan An Xi Road, Shanghai 200336, P.R.C.
Tel: +86-21-6270-0489 Fax: +86-21-6270-0499

• London

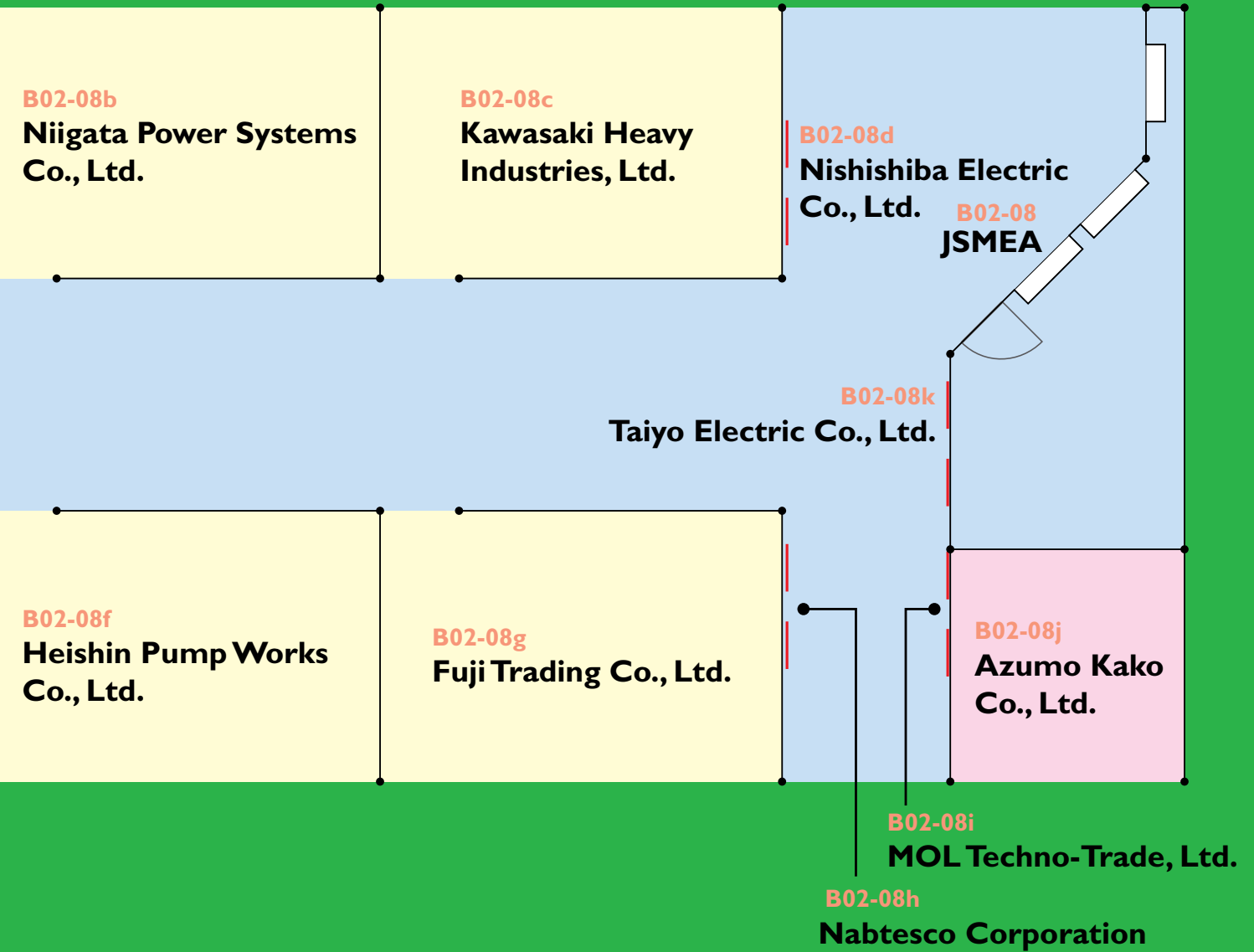
Japan Ship Centre (JETRO), Ship Machinery Department
2nd Floor, 6 Lloyd's Avenue, London EC3N 3AX UK
Tel: +44-20-7680-9456 Fax: +44-20-7680-9416
E-mail: info@jsc.org.uk
URL: <http://www.jsc.org.uk>

B02-08a

**Daihatsu Diesel Mfg.
Co., Ltd.**

B02-08e

Yanmar Co., Ltd.



AZUMA ENGINEERING (S) PTE LTD

a subsidiary of Azuma Kako., Ltd. (Japan)

http://www.azu-net.co.jp/azuma_kako/index.html



● Outline of Company

Azuma Kako., Ltd. (Japan) was established on 1935 in Tokyo/Japan as specialist for engine components welding repair. AZUMA is renowned for helping ocean-farer vessels to recondition and repair damaged engine components. This Japanese company soon expanded its network and marks the start of its workshops in Taiwan and Singapore.

Azuma Engineering (S) Pte Ltd is a subsidiary of Azuma Kako., Ltd. (Japan). It was incorporated on 19 February 1990 and was built mainly for reconditioning of diesel engine components.

The company is committed to achieve professional excellence in fulfilling customers' satisfaction and expectations. It aims to carry out the responsibilities and obligations thru fast and prompt response and give customers fresh information and techniques as approved by engine makers.

● Authorized Repairer of:

Piston Crown
Cylinder Cover
Exhaust Valve Spindle / Seat
Exhaust Valve Housings
Piston Rod
Piston Skirt
Connecting Rod
Fuel Injection Parts

● Developments and Innovations:



CNC Machine (Max Swing 2.7 M)



High Torque CNC Cutting Machine Center

● Head Office:

AZUMA KAKO ., LTD Tokyo – Japan (Head Office)

Tel : (81) 3 3765 4811

E-mail : azumatokyo@azu-net.co.jp

URL: http://www.azu-net.co.jp/azuma_kako/index.html

SINGAPORE:

AZUMA ENGINEERING (S) PTE LTD

14 Tuas Link 1 Jurong, Singapore 638596

Tel : (65) 6861 4677

Fax : (65) 6861 5406

E-mail : sales@azuma.com.sg

AZUMA SPINDLE FUEL EQUIPMENT (S) PTE LTD

No. 186, Gul Circle, Jurong, Singapore 629631

Tel : (65) 6262 2324

Fax : (65) 6262 2787

E-mail : sales@azumaspindle.com.sg

TAIWAN:

AZUMA ENGINEERING LTD.

No. 29, Hsing Yeh Street, Hsiao Kang District, Kaoshiung, Taiwan R.O.C.

Tel : (07) 871 6901

Fax : (07) 871 6957

Email : terrychang@azumatwn.com.tw

● Authorized by:

- Mitsubishi Heavy Industries (Japan) - since 1997
- Akasaka Diesel (Japan) - since 1999
- Hanshin Diesel (Japan) - since 2003
- Kawasaki Heavy Industries (Japan) - since 2004
- Mitsui Engineering & Ship Building Co. Ltd -since 2008
- Kobe Diesel - since 2009
- Hitachi Zosen Trading & Manufacturing – since 2009

● Certified By:

Our reconditioning techniques and welding procedures for piston crowns, cylinder covers, and related parts are approved and certified by the following Classification Societies:

- Lloyd's Register of Shipping - since 15 May 1991
- American Bureau of Shipping - since 17 October 1991
- Nippon Kaiji Kyokai - since 1 September 1992
- Det Norske Veritas - since 5 September 1992
- Bureau Veritas - since 3 Novemembr 1992
- Germanischer Lloyd - since 5 October 2005

KAWASAKI HEAVY INDUSTRIES, LTD.

<http://www.khi.co.jp>



● Outline of company

Since its establishment in 1878, Kawasaki Heavy Industries, Ltd. Has dedicated itself to innovative technological development and has been active in business worldwide.

It has expanded from its origin in shipbuilding to rolling stock, aircraft, machinery, plants, bridges, motorcycles and more.

Now Kawasaki is engaged in areas such as transportation, the development of energy and of space, and environmental protection; projects crucial to the lives and livelihood of future generations.

Kawasaki is aggressive in its pursuit of technological development – we are building dreams by staying in front.

● Main products

Diesel Engine, Main Steam Turbine, Main Boiler, Reduction Gear, Controllable Pitch Propeller, Side Thruster, Azimuth Thruster (Rexpeller) & Intergrated Control System, Steering Gear & Deck Machinery

Head office

Kawasaki Heavy Industries, Ltd.
World Trade Centre Building, 4-1, Hamamatsu-cho
2-chome, Minato-ku, Tokyo 105-6116, Japan
TEL +81-3-3435-2374 FAX +81-3-3435-2022
Email: marine-machinery-sales-e@khi.co.jp
URL: <http://www.khi.co.jp>
TEL +81-3-3435-6879 FAX +81-3-3435-2023
Email: takamatsu_kenichi@khi.co.jp
URL: <http://www.khi.co.jp/kpm>

● Exhibits

Rexpeller (Azimuth Thruster)
Steering Gear

● Features

Rexpeller (Azimuth Thruster) : Rexpellers have been installed on Tug Boats, Offshore Support Vessels, Drilling Vessels, and other many kinds of vessel all over the world with its variation of installation such as retractable, swing up, container, and underwater mounting.

Liaison office and/or agent

Kawasaki Heavy Industries (Europe) B.V.

7th floor, Rivierstaete, Amsteldijk, 166, 1079 LH Amsterdam.

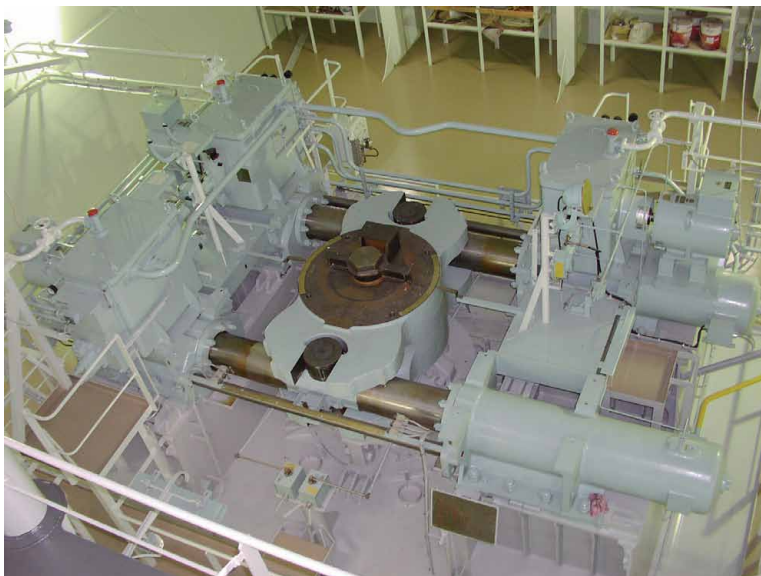
The Netherlands

TEL +31-20-644-6869 FAX +31-20-642-5725

Kawasaki Heavy Industries (UK) Ltd.

4th floor, 3 St. Helen's Place, London EC3A 6AB,
United Kingdom

TEL +44-20-7588-5222 FAX +44-20-7588-5333



Steering Gear



Rexpeller (Azimuth Thruster)

● Outline of Company

Since its establishment in 1907, Daihatsu Diesel Mfg. Co., Ltd. has pioneered the ages and has maintained a first rate position in the Diesel engine business. Our Diesel engines in the 50 to 7000kW range has been very popular in both the overseas and home markets, confirming Daihatsu Diesel as the leading company in this field. We believe our reputation is the result of our dedicated and consistent efforts to provide reliable products, and that it is our duty as an enterprise to uphold the Daihatsu principles and corporate attitude. Our constant efforts to achieve the highest quality can be seen in the industry-leading quality assurance systems of Daihatsu Diesel's Headquarter and Moriyama Plants, which has been certified by Lloyd's Register Quality Assurance Ltd. as satisfying the requirements of ISO9001.

Daihatsu Diesel, targeting the global market, will continue fostering a progressive business culture. Furthermore, we are fully determined to fulfill the trust and expectations of our valued customers, and to contribute to the society through technological innovations with emphasis on environmental consciousness and quality.

● Main Products

Marine Propulsion and Auxiliary Diesel Engines

● Tokyo Office

16-11, Nihonbashi 1-chome, Chuo-ku,
Tokyo 103-0027, Japan
Tel: +81-3-3279-0827 Fax: +81-3-3245-0395
URL: <http://www.dhtd.co.jp>

● Liaison Offices

Daihatsu Diesel (Europe) Limited
5th Floor, Devon House, 58-60 St. Katharine's Way,
London E1W 1LB, U.K.
Tel: +44-20-7977-0280 Fax: +44-20-7702-4325
E-mail: daihatsu@ddeuk.com

● Exhibits

- Scale model of New 6DE-18 Diesel engine
 - Demonstration of OIL MIST DETECTOR
- Features of New Model DE Engine
Environmentally Friendly Engines

We have successfully developed an environmentally friendly engine with high potential for meeting future emission regulations that are expected to become increasingly strict, such as those targeting the reduction of CO₂ emissions.

We have complied with the IMO emission standards by adding advanced combustion technology to the engine.

We have three main concepts for New Model DE Engine:

Earth-Friendly Environmental Harmony

The New Model DE Engine is designed to achieve conformity with IMO NO_x regulations Tier 2 and Tier 3, compatibility to low sulfur fuel oil, and reduction of CO₂ emissions with low fuel consumption and smokeless.

Enhancement in Durability and Reliability for the Long Life

The New Model DE Engine is designed to reduce navigation costs by enhancing the durability of parts, achieving the low lubricating oil consumption and the fuel consumption, and realizing simple maintenance finished in a short time.

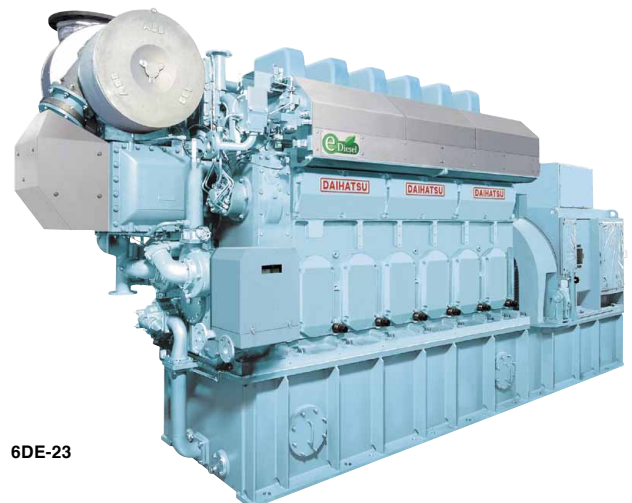
Improvement in Safety and Assurance

Perfect fire prevention measures have been taken to the New Model DE Engine. And the engine is designed to have simplified connection points for easier installation. Above all, we have adopted the engine controller with easy handling.

The New Model DE engine is equipped with state-of-the-art safety and control functions to automatically accumulate data (events) showing engine ignition, start and emergency so that investigation in case of maintenance and troubleshooting can be conducted effectively. Easy handling and adequate interlock circuit is realized to prevent malfunction of the engine in operation. Moreover, we have achieved simplification of communications by the sea-land communication system.



6DE-18



6DE-23

NIIGATA POWER SYSTEMS CO., LTD.

<http://www.niigata-power.com>



● Outline of company

Niigata Power Systems is one of the leading suppliers of diesel engines and azimuth thrusters. Our products NIIGATA DIESEL is famous for its innovative technologies and operational stability in hard conditions.

Azimuth thruster named NIIGATA Z-peller has been delivered over 3000 units until today and acquired worldwide reputation.

● Main products

- 1) Diesel engines
- 2) Z-pellers
- 3) Couplings and dampers
- 4) Remote control and monitoring system.

● Head office

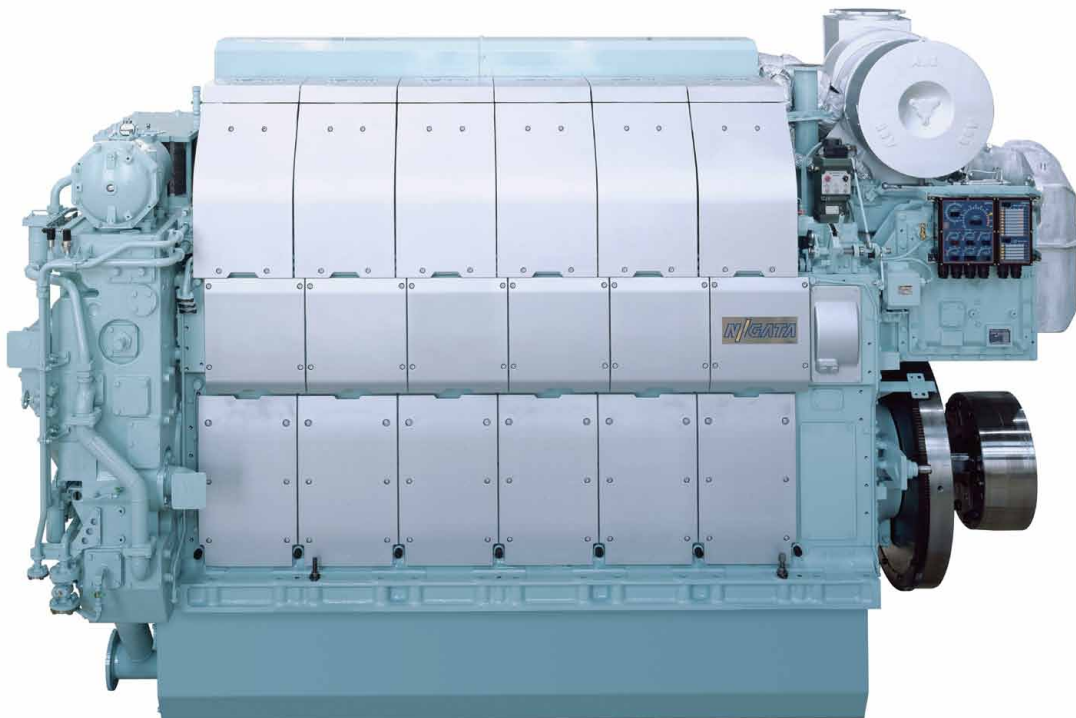
9-7, Yaesu 2-Chome, Chuo-Ku, Tokyo 104-0028 Japan
Tel: +81-3-6214-2836 Fax: +81-3-6214-2839
URL: <http://www.niigata-power.com>

● Exhibits

- 1) Scale model of NIIGATA DIESEL 28AHX
- 2) Scale model of ROV subsea operation vessel

● Features

Z-peller: Big advantage features excellent bollard-pull and maneuverability, and easy maintenance with robust structure under a single responsibility throughout shafting with NIIGATA DIESEL.



FUJI TRADING CO., LTD.

<http://www.fujitrading.co.jp>



● Outline of company

Fuji Trading Co., Ltd. was established as a marine supplier in 1953 at Kobe, Japan. Over a half century since then, the company has expanded and diversified into a supplier of technology, offshore drilling equipment and machinery as well as a developer of new markets and business opportunities.

We procure, transport and pass through the customs the required goods for our customers who travel around a unique market of "Marine" on a global scale by ship, and supply their requirements safely and accurately at main ports in the world within a limited time.

Through our business activity, we contribute to the world trade by supporting smooth and economical ship's operation. In order to execute our task, we give the highest priority to the partnership with our customers, business acquaintances and makers. We are now upgrading and integrating our three functions, i.e.; information, procurement, and physical distribution.

We have been rendering quality services of ship's stores, provisions, machinery, spare parts, engineering, and so on. With the international network through the main depots and offices, we are ready to provide the professional services anytime, anyplace.

● Head office

Marine Logistics Headquarters:

6, Fukaehamamachi, Higashinada-ku, Kobe 658-0023, Japan

Tel: +81-78-413-2601

Fax: +81-78-413-1386

E-mail: mhq@fujitrading.co.jp

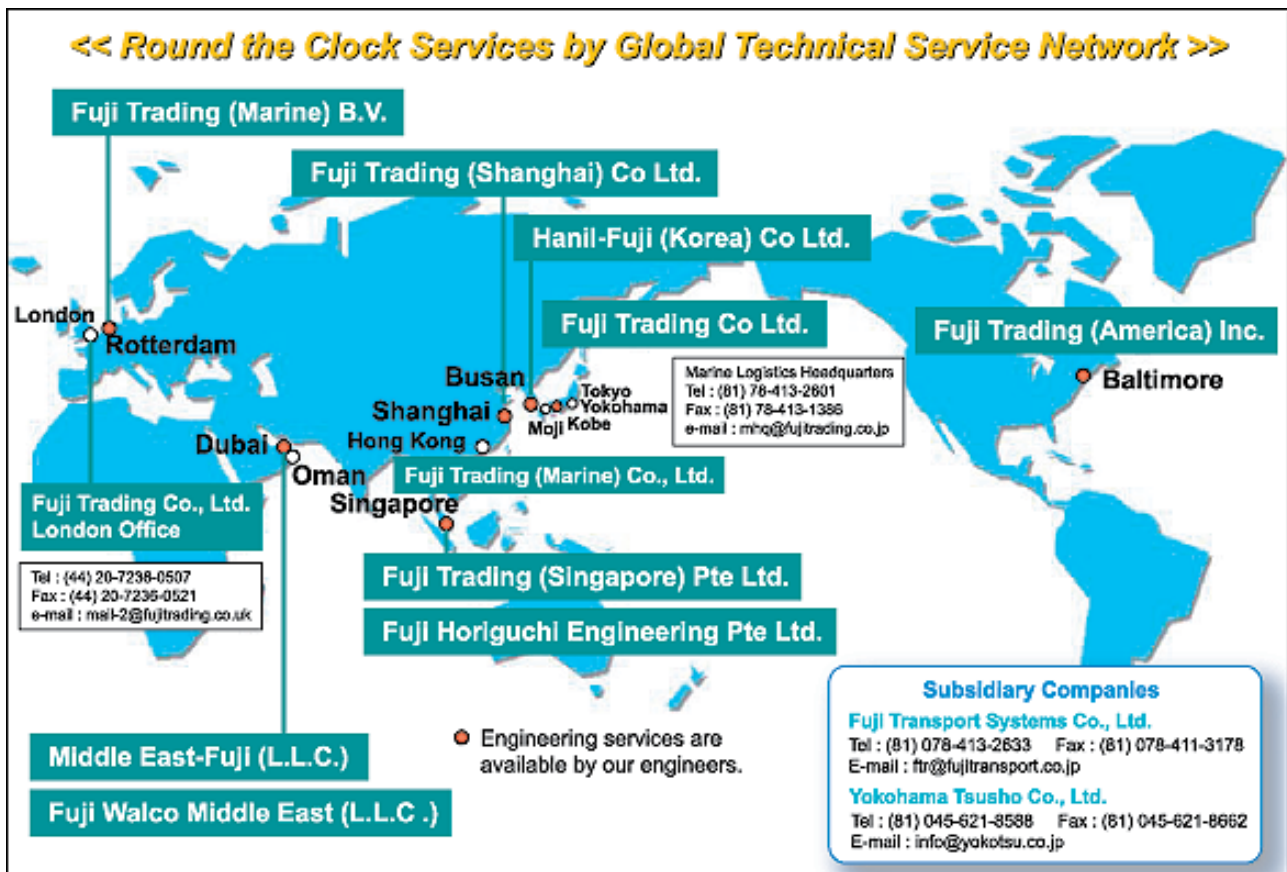
URL: <http://www.fujitrading.co.jp>

● Exhibits

1. Information related soft and hardware
2. Procurement related soft and hardware
3. Distribution related soft and hardware

With the above three main themes, we exhibit what Fuji can provide for our customers now such as:

- Global Technical Network Service
- "FINE" (Fuji Information Net) System – 24-hour Information service of your spare parts status
- IMPA Marine Stores Guide
- Immersion Suit, Fire Fighting Suit, Life Jacket of Takashina Life Preservers make as safety package
- FN Tapes
- Introduction of Teikoku Pumps
- Lifteraft of Fujikura Rubber make



HSN-KIKAI KOGYO CO., LTD.

(HEISHIN PUMP WORKS CO., LTD.)

<http://www.hsn-kikai.com>



● Outline of company

Since its establishment in 1929, HSN-KIKAI KOGYO (HEISHIN PUMP WORKS) Co., Ltd. is a Japanese manufacturer of various kinds of marine Pumps including Centrifugal Pumps, Gear Pumps, Piston Pumps, Eccentric Screw Pumps and Bilge Separators.

We have a company policy that we should provide our products which contribute to development of the world. We always have been selling marine ecological products such as Bilge Separators. Besides, we have developed new Gear Pumps which are suitable for Low sulfur fuel oil. Furthermore, we are able to provide unique Pumps for space-saving and reducing pipe fitting in Engine room.

● Main products

Centrifugal Pumps
Gear Pumps
Piston Pumps
Eccentric Screw Pumps
15ppm Bilge Separators (Oily Water Separators)
O. D. M. (Oil Discharge Monitoring and Control System)

● Head office

1-5-30, Furuta, Harima-cho, Kako-gun, Hyogo Pref.,
675-0146 Japan
Tel: +81-79-436-3001
Fax: +81-79-436-3015
E-mail: overseas@hsn-kikai.com
URI: <http://www.hsn-kikai.com>

● Exhibits

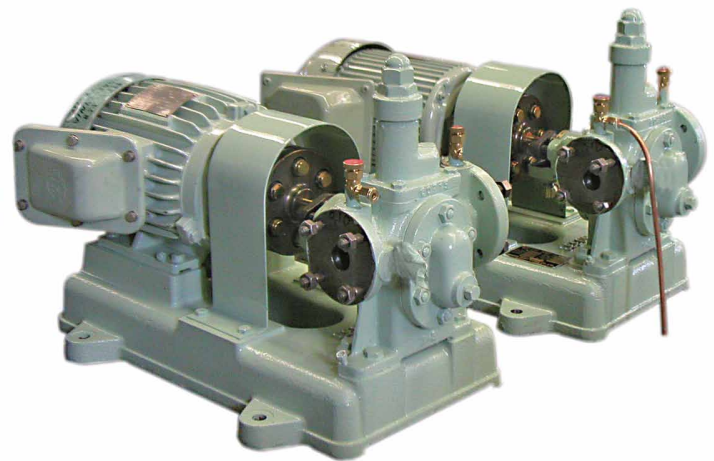
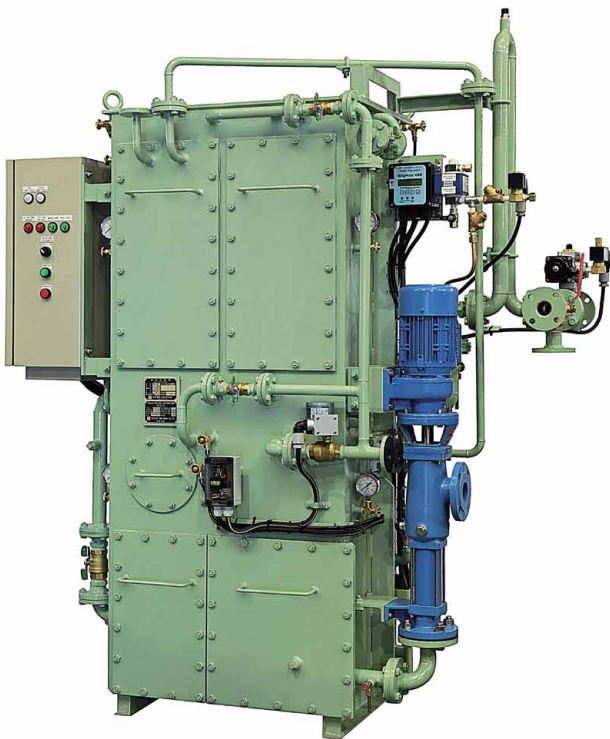
A Gear Pump for Low sulfur fuel oil (Cut model)

● Features

We have developed New Gear Pumps which are suitable for Low sulfur fuel oil. When using Low sulfur fuel oil, due to low viscosity of oil and bad lubricity by low sulfur, bad influence may appear on Gear Pumps. The influence by thrust load of suction and discharge pressure may also be a negative factor.

In order to solve these problems, we have carried out lots of experiments since August 2008, and New Gear Pumps have been developed successfully.

Please visit our booth, and see the New Gear Pump. Of course, you can look inside of the Pump.



● Outline of Company

Yanmar, ever since its foundation, has been developing versatile energy and labor-saving diesel engines with output ranging from 2kW to 3,500kW through its unique diesel technologies, contributing to the community through energy conservation.

Our ceaseless efforts to produce ever higher quality products were rewarded with ISO9001 certification by Lloyds (LRQA) of Britain for the Amagasaki Plant of the Large Power Products Operations Division in July 1992, confirming international recognition for the excellent quality assurance system of the plant. The Large Power Products Operations Division of Yanmar has been a pioneer in tackling environmental problems and in June, 1997, the Amagasaki Plant became the first large industrial and marine diesel engine plant in Japan to be certified under ISO14001. The marine diesel engines produced by the Amagasaki Plant were also the first in Japan to clear the emission (NOx) control regulations of the IMO. The far-sighted efforts and excellent technologies of the Large Power Products Operations Division protect our environment and are highly evaluated in the world.

The Amagasaki Plant of Yanmar aims to ensure beautiful harmony with the global environment and to contribute widely throughout industry and society to create a better future for all.

● Head Office

1-32, Chayamachi, Kita-ku, Osaka, Japan.

Export Dept. Large Product Marketing Dept.

Large Power Products Operations Division

1-1, Yaesu 2-chome, Chuo-ku, Tokyo 104-0028, Japan.

Tel: 81-3-3275-4909

Fax: 81-3-3275-4969

URL: <http://www.yanmar.co.jp>

● Overseas Subsidiary

• Yanmar Europe B.V.

Brugplein 11, 1332 BS Almere-de Vaart, The Netherlands

Tel: 31-36-5493200

Fax: 31-36-5493209

URL: <http://www.yanmar.nl>

• YANMAR ASIA (SINGAPORE) CORP.PTE.LTD. (YASC)

4 Tuas Lane, Singapore 638613

Tel: 65-6595-4200

Fax: 65-6862-5189

URL: <http://www.yanmar.co.jp/yasc>

• YANMAR ENGINE (SHANGHAI) CO., LTD.

18F, North Tower, Shanghai Stock Exchange Building 528

South Pudong Road, Pu Dong Shanghai, China 200120

Tel: 21-6880-5090

Fax: 21-6880-8090

URL: <http://www.yanmar-sha.com>

• YANMAR AMERICA CORPORATION. NEW YORK BRANCH

Parker Plaza 16F, 400 Kelby Street, Fort Lee, NJ 07024

U.S.A.

Tel: 201-592-8500

Fax: 201-592-8503

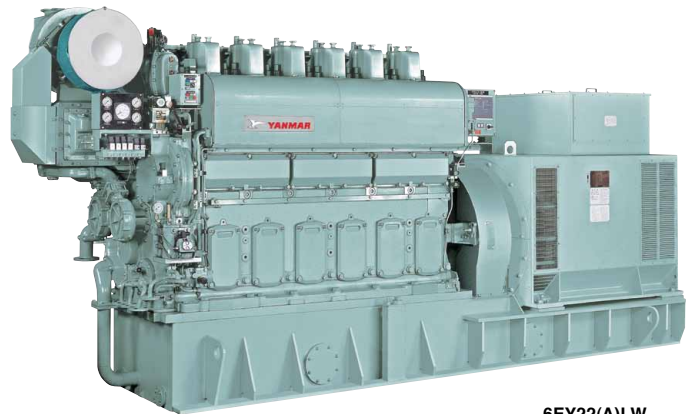
URL: <http://www.yanmar.com>

● Main Products

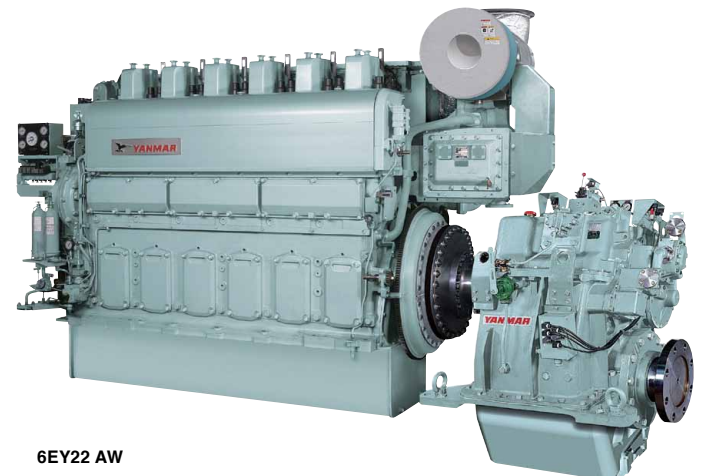
Marine propulsion and auxiliary diesel engines

● Exhibits

Marine auxiliary diesel engine, 6EY22(A)LW Cut Model



6EY22(A)LW



6EY22 AW

● Features 6EY22(A)LW:

1. It is based on the two core concepts of raising Life Cycle Value and Harmony with global environment.
2. Contamination of combustion chamber with the use of heavy fuel oil is controlled by "contamination control technology" and "equipment of contamination resisting application".
3. Compact design allows simplicity in the engine room layout.
4. The number of parts has been reduced, further increasing ease of maintenance.
5. With concentration of the pipe connections at the front of the engine, piping construction man-hour are reduced.
6. Low fuel consumption and correspondence to IMO Tier II were achieved at the same time by adopting the high pressure miller cycle system.

● Outline of company

MOL Techno-Trade,Ltd.(MOL Tech) focus on selling, environment friendly products such as the Propeller Boss Cap Fins(PBCF),which improves the efficiency of ship propellers, heat-insulation coatings ,energy-saving lighting, and much more. We also deal with Scaffolding for bulker holds (for maintenance and inspection),Portable Liquid-Level Gauge for Ballast Tanks, etc.

● Main products

Propeller Boss Cap Fins (PBCF), Inspection Scaffolding (PMA Applied) and Maintenance Staging Tower for bulker holds.
Portable Liquid-Level Gauge for Ballast Tanks.

● Head office

MOL Techno-Trade,Ltd.

Adress: Yaesu Daibiru Bldg. 6F, 1-1, Kyobashi 1-Chome,
Chuo-ku,Tokyo 104-0031, Japan.
PBCF Dept.

Tel: 81-3-6367-5380, Fax: 81-3-6367-5516

Person in charge : Mr. Takeuchi
Ship's Supplies&Machinery Dept.

Tel: 81-3-6367-5381, Fax: 81-3-6367-5517

Person in charge : Mr.Aoki

E-mail:inquiry@motech.co.jp

● Exhibits

Panel& Catalogue

● Features

Propeller Boss Cap Fins (PBCF)

5% energy saving

Inspection Scaffolding

PMA Applied

Maintenance Staging Tower

Structure design allows easy relocation

Portable Liquid-Level Gauge

Small and lightweight it is easily moved

● Liaison office and/or agent

MOL Techno-Trade,Ltd.

European Representative Office

Adress : Calandstraat 88-b 3125 BB
Schiedam,Netherlands.

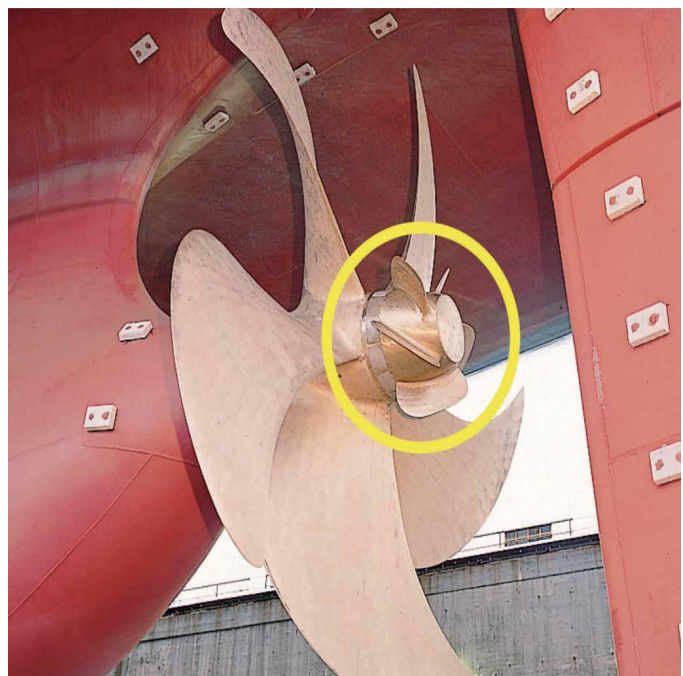
Tel / Fax: +31(0)10-462-5716

Person in charge: Mr.Richard Verberk

E-mail: rep@moltech-europe.nl



Maintenance Staging Tower for bulker hold.



PBCF bolster the propeller's propulsion efficiency

● Outline of Company

Taiyo Electric Co., Ltd. has been accumulating sales records since its founding nearly a century ago. Today, we deliver highly reliable electrical equipment for wide variety of vessels all over the world. Vessels equipped with our products range from small fishing boats and coastal ships to large vessels, including mega container ships, cruise ships, VLCCs, VLOCs, and LNGCs.

● Main Products

Generators, Induction motors, Switchboards & Starters, Consoles with Alarm Monitoring Systems, Inverter Speed Control Systems, Thyristor Control Shaft Generating System, Diesel Electric Propulsion System, Ventilation Fans,

● Features

TAIYO "S" series shaft generating system has been developed by fully utilizing the supreme techniques and knowhow accumulated over many years by TAIYO for producing ships' electrical machinery and apparatus. This system has high performances and high quality and can always supply constant frequency and voltage even though the speed of the main engine greatly fluctuates, thereby assuring the saving of energy and labor.

tuates, thereby assuring the saving of energy and labor.

When both a shaft generator and waste gas turbo-generator are installed in the system also equipped with a control circuit comprising thyristor inverter TH1 and thyristor converter TH2, a shaft motor at the time of this system can be operated as excessive waste gas thereby recovering the energy of waste gas for the purpose of propulsion of propeller.

● Head Office

Sanritsusha Bldg., 16-8, 1-Chome, Uchikanda, Chiyoda-ku, Tokyo 101-0047 Japan. Tel: +81-3-3293-3067 Fax: +81-3-3292-7012

URL: <http://www.taiyo-electric.co.jp>

Takuo Yamada/ General Manager of Overseas Business Dept

e-mail: takuo-yamada@taiyo-electric.co.jp

● Liaison Office and/or Agent

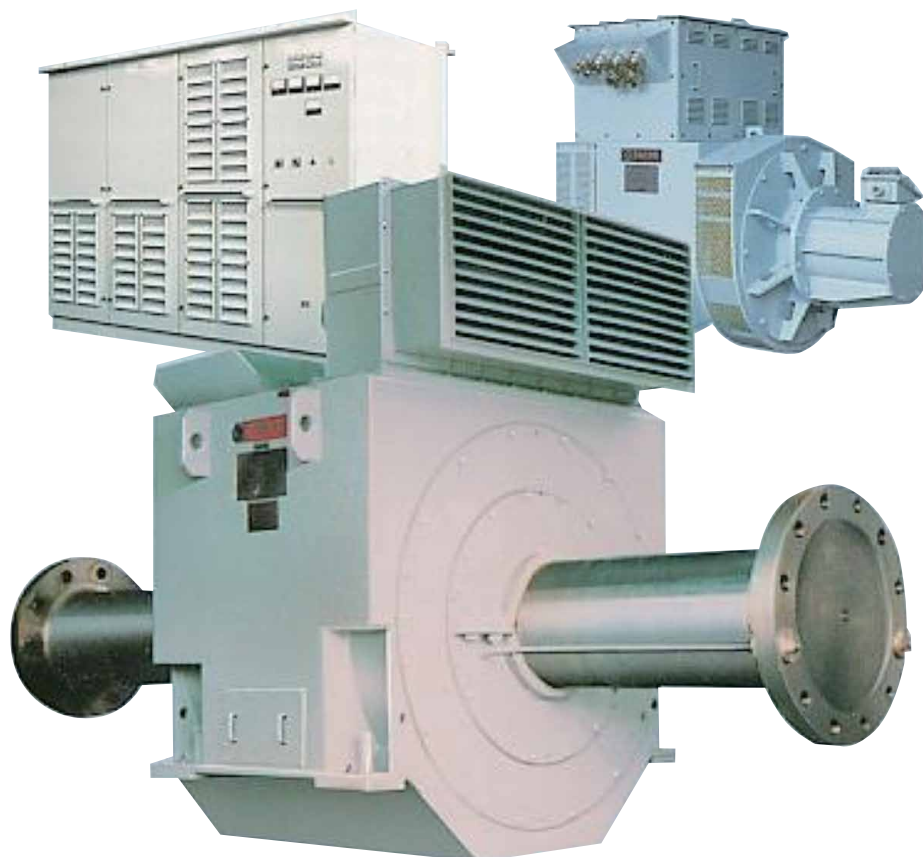
Wilhelm Rump KG GmbH & Co.

Mr. Hubertus Rump/ Managing Director

Buchheisterstrade 6 20457, Hamburg, Germany

URL: <http://www.rump-kg.de>

Tel: +49-40-3178 42-0 Fax: +49-40-319 48-41



NABTESCO CORPORATION

<http://www.nabtesco.com/en/index.html>

Nabtesco Corporation

● Outline of company

NABTESCO Corporation has been the world's leading manufacturer of motion control systems for Air, Land and Marine field applications.

NABTESCO has played a leading role in the total control system in marine field, especially M-800 series main engine remote control system and MG-800 digital governor system has enjoyed a good reputation among customers the world over. In addition, it has set up three main bases service center in Japan, Singapore and the Netherlands, thus expanding the global service network and providing finely-tuned after-sales services.

● Main products

- Remote Control System for marine diesel engine, CPP, Thruster and steam turbine
- Digital Governor System for marine diesel engine
- Telegraph System
- Equipment for Electronically Controlled Engine

● Head office

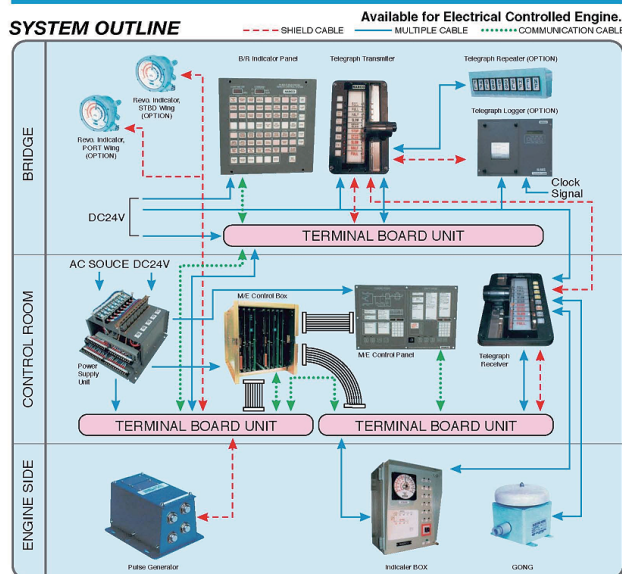
Marine Control System Company
Marketing & Sales Department
1617-1, Fukuyoshidai 1-chome, Nishi-ku, Kobe, Japan 651-2413
Tel:+81-78-976 5361
Fax:+81-78-967-5362
E-mail: newbuilding@nabtesco.com (newbuilding only)

● Liaison office and/or agent

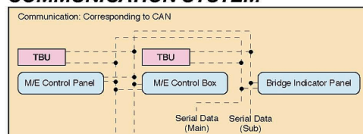
Nabmic B.V.
Brouwerstraat 34, 2984 AR Ridderkerk The Netherlands
Tel: +31 180 530 590
Fax: +31 180 530 591
E-Mail: nabmic@nabmic.nl (after-sales service only)

Nabtesco

M-800 III BRIDGE MANEUVERING SYSTEM



COMMUNICATION SYSTEM



Nabtesco

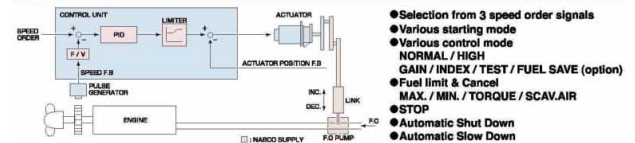
MG-800 DIGITAL GOVERNOR SYSTEM

Approved by MAN Diesel A/S, Wärtsilä Switzerland Ltd

FEATURES

- **Variable Start Modes**
Variable start modes provide smooth starting under all conditions and reduce black-smoke emissions.
- **Prevention of Overspeed**
Special Software is provided to prevent the engine from overspeeding
- **Automatic PID Selection**
Automatic PID selecting mechanism ensures stable control at any speed.
- **High Gain Mode**
Automatic changeover mechanism provides safe operation in rough weather.
- **Adjustment-Free Operation**
Nabtesco's governor simulator allows for adjustment before delivery.
- **Prevention of Jiggling**
Jiggling is prevented by means of special filter.
- **Touch Panel Display**
User-friendly touch panel display and GUI (Graphical User Interface) achieve easy operation.

FUNCTION



CONTROL UNIT



ACTUATOR

Fitted on engine



	EAR-20	EAR-120	EAR-500A	EAR-1000A
Max output	56N·m	330N·m	960N·m	1310N·m
Max stroke (range)	42°	42°	42°	42°

● Outline of Company

NISHISHIBA, as a member of the Toshiba Group, has been pursuing the advancement of the control and efficient use of energy.

For the last half-century, with the combined force of power and electronics, we have been contributing to society in various ways.

We have made electric power generating system, electric systems for marine and offshore use, control systems, and industrial electric equipment systems.

● Main Products

- All kind of Generators and Motors
- All kind of Switchboards and Ventilation Fans
- Inverter control systems for Crane, Winch/Windlass, Aux. pump
- Shaft driven Generating Systems
- Electric Propulsion Systems

● Head office & Factory

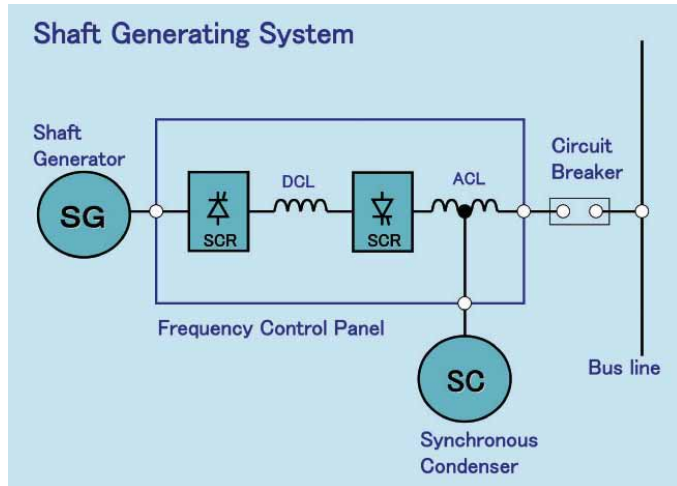
1000 Hamada, Aboshi-Ku, Himeji 671-1280, Japan
Tel: +81-79-271-2448
Fax: +81-79-271-2411
URL: <http://www.nishishiba.co.jp>

● Kansai branch

Shin-Osaka Iida Building, 5-33, Nishimiyahara 1-chome,
Yodogawa-Ku, Osaka 532-0004, Japan
Tel: +81-6-6397-3461
Fax: +81-6-6397-3475

● Exhibits

- 1) Shaft driven Generating Systems



- 2) Generators, Motors, Inverter control systems
- 3) Shaft driven Generating Systems

● Features

- Energy Saving
- Less Maintenance
- Operation-support System with Fault Diagnosis
- Motoring mode
- Direct connection to 6.6kV main bus without step-up transformer
- Emergency Power Take Off (Option)

Liaison office and/or agent

BARTHEL + LUDERS GMBH
Norderelbstrabe 15, D-20457 Hamburg, Germany
Tel: +49-40-3119-8150
Fax: +49-40-3119-8111



JSMEA

Japan Marine Equipment Association

This article is published under a grant from
The Nippon Foundation.

