



## Akasaka Diesels Limited

株式会社赤阪铁工所

<http://www.akasaka-diesel.jp>

### Outline of Company

Akasaka Diesels Limited is a Japanese leading manufacturer of main engines for cargo ships, tankers, bulk carriers and fishing boats.

Akasaka Diesels can look back its establishment as an engine repair shop in Yaizu, a fishery town in Shizuoka prefecture, in 1910. Since then, Akasaka Diesels have grown up together along with the development of Japanese domestic fishery industry, also expanding its products' coverage to even bigger merchant vessels. Today its products are known worldwide by its high-reliability and fine performances based on authentic technologies being succeeded over generations.

On the other hand, situations and demands are always variable and they never allow us to stop challenging to the technology and the market. Akasaka Diesels is always ready to support you with diligence and sincerity, which will surely meet your expectations.

### 公司概况

赤阪铁工所是日本顶尖的船用主机制造商，产品主要用于货船、油轮、散装船及渔船。

赤阪铁工所最早是 1910 年在静冈县的小渔村烧津成立的发动机维修厂。从那时开始，赤阪铁工所伴随着日本国内渔业的发展而成长起来，产品用途扩大到更大型的商船领域。如今，其产品因高可靠性和高性能闻名于世，而这些是通过几代传承的可靠技术来实现的。

另一方面，市场形势和客户需求日新月异，让我们不断地挑战新技术和新市场。战赤阪铁工所时刻准备用勤奋和真诚为您服务，切实满足您的期望。

### Main Products

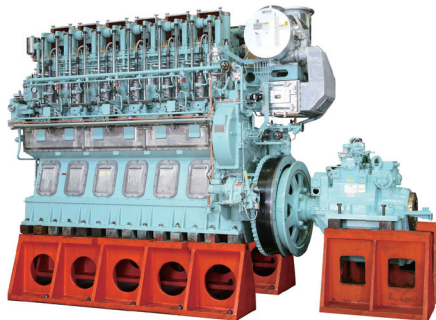
4 Stroke Diesel Engine: Akasaka Diesel Engine  
TYPE A / AX (1,176kW~3,309kW)  
TYPE K / E (956kW~1,618kW)  
TYPE AH / U (1,838kW~2,942kW)

2 Stroke Diesel Engine: UE Diesel Engine  
(licensed by Mitsubishi Heavy Industries, Ltd.)  
UEC50LSE / UEC45LSE /  
UEC35LSE (4,350kW~14,000kW)  
UEC50LS II / UEC43LS II / UEC37LS II /  
UEC33LS II (2,830kW~11,560kW)

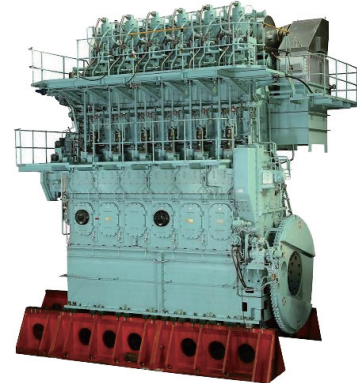
### 主要产品

4 冲程柴油机：赤阪柴油机  
TYPE A / AX (1,176kW~3,309kW)  
TYPE K / E (956kW~1,618kW)  
TYPE AH / U (1,838kW~2,942kW)

2 冲程柴油机：UE 柴油机  
(由三菱重工授权制造)  
UEC50LSE / UEC45LSE /  
UEC35LSE (4,350kW~14,000kW)  
UEC50LS / UEC43LS / UEC37LS /  
UEC33LS (2,830kW~11,560kW)



AX33B 1,618kW / 310min-1



6UEC45LSE 7,470kW / 130min-1

#### Akasaka 4 stroke Diesel Engine

##### 赤阪 4 冲程柴油机

- Turbo charged diesel engine with in-line 6 cylinders  
直列式六缸涡轮增压柴油机
- Long stroke design for high efficiency  
高效率的长冲程设计
- Two valve system for high reliability  
高可靠性双阀门系统
- Cage type valves  
(Air intake, exhaust & starting air valves)  
便于维护保养的笼形阀（进气、排气 & 启动空气阀）
- Compatible with Heavy fuel oil  
燃料可使用重质燃油

#### Akasaka-Mitsubishi UE Diesel Engine

##### 赤阪三菱 UE 柴油机

- Highly reliable brand known worldwide  
世界知名高品质品牌
- Low specific fuel consumption  
低燃油消耗
- High propeller efficiency  
高螺旋桨效率
- Compatible with low-quality fuel oil  
燃料可使用低质燃油
- Easy maintenance  
易于维护保养
- Space-saving design  
节省空间设计

#### Head Office (for Overseas market)

14th Floor, South Tower, Yurakucho Denki Building, 1-7-1  
Yurakucho, Chiyoda-Ku, Tokyo 100-0006, Japan  
Tel: +81-3-6860-9081  
Fax: +81-3-6860-9083  
E-mail: [info@akasaka.co.jp](mailto:info@akasaka.co.jp)

#### 总部（海外市场）

日本 东京都千代田区有乐町一丁目 7 番 1 号  
有乐町电气大楼南馆 14 层  
邮编：100-0006  
电话：+81-3-6860-9081  
传真：+81-3-6860-9083  
电子邮箱：[info@akasaka.co.jp](mailto:info@akasaka.co.jp)