

MUMBAI

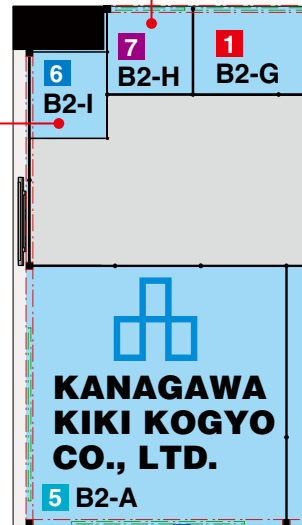
8 – 11 February 2012



Contents

1	AKASAKA DIESELS LIMITED	4
2	DAIHATSU DIESEL MFG. CO., LTD.	5
3	FUJI TRADING CO., LTD.	6
4	KAMOME PROPELLER CO., LTD.	7
5	KANAGAWA KIKI KOGYO CO., LTD.	8
6	NAKASHIMA PROPELLER CO., LTD.	9
7	SHINKO IND. LTD.	10
8	TAIYO ELECTRIC CO., LTD.	11
9	YANMAR CO., LTD.	12
	Seminar on Japanese Marine Equipment	13
	Gist of JSMEA' s Action Plan 2011 In Pursuit of Greater International Competitiveness and Further Animated Industrial Activities	14

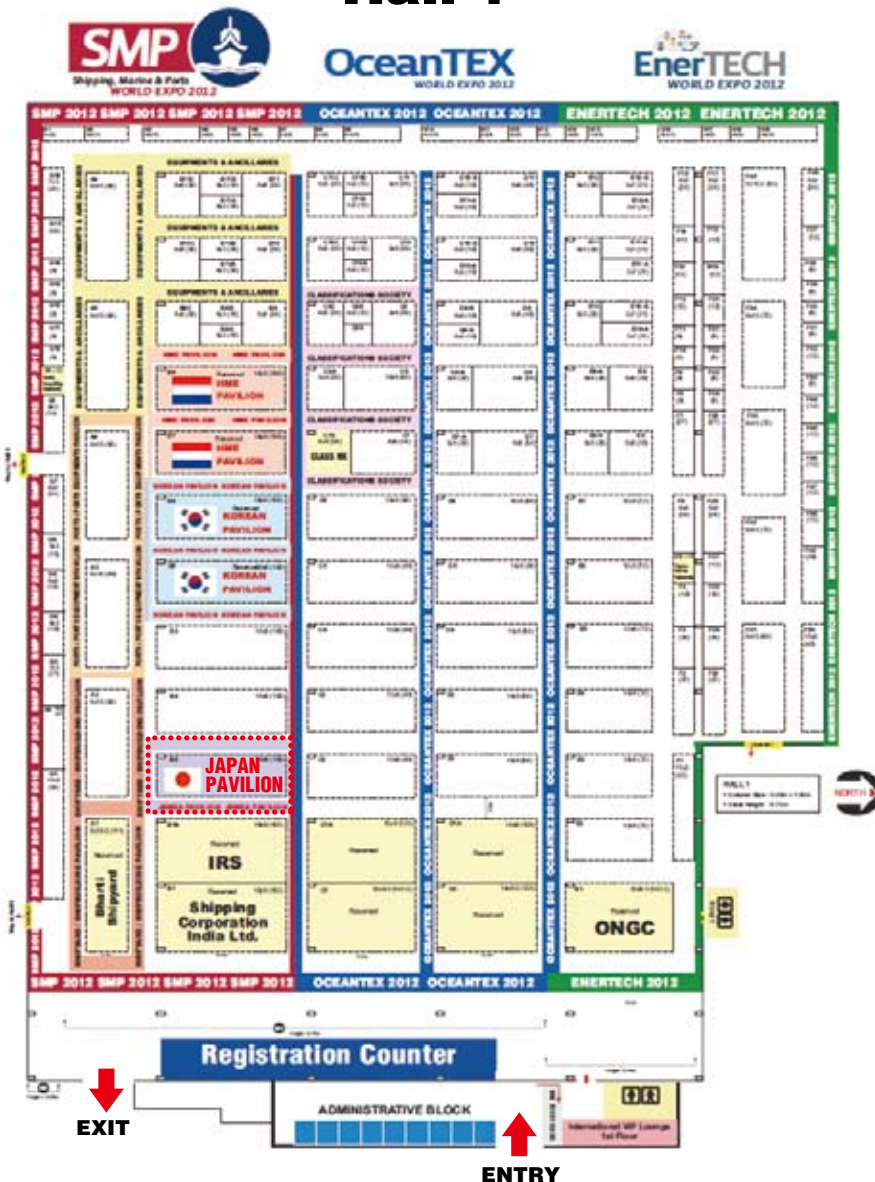
Japan Pavilion L



Products and Services

Products and Services
Battery chargers
Compressors, air
Condensers
Control systems & equipment
Control, joy-stick
Coolers, oil
Couplings, elastic
Cylinder blocks, diesel engine
Cylinder covers, diesel engine
Cylinder liners, diesel engine
Data loggers
Data loggers
Detectors, oil mist
Diesel engines, auxiliary (500-1000 rev/min)
Diesel engines, auxiliary (1000 rev/min over)
Diesel engines, propulsion (500-1000 rev/min)
Diesel engines, propulsion (1000 rev/min over)
Diesel engines, propulsion (up to 500 rev/min under)
Distribution boxes for electric light
Distribution boxes for power
Fans
Filters
Generators
Generators, emergency
Heat exchangers
Intermediate shafts
Junction boxes
Monitor panels
Monitoring & control systems
Motors
Parts processing & repairing
Propeller shafts

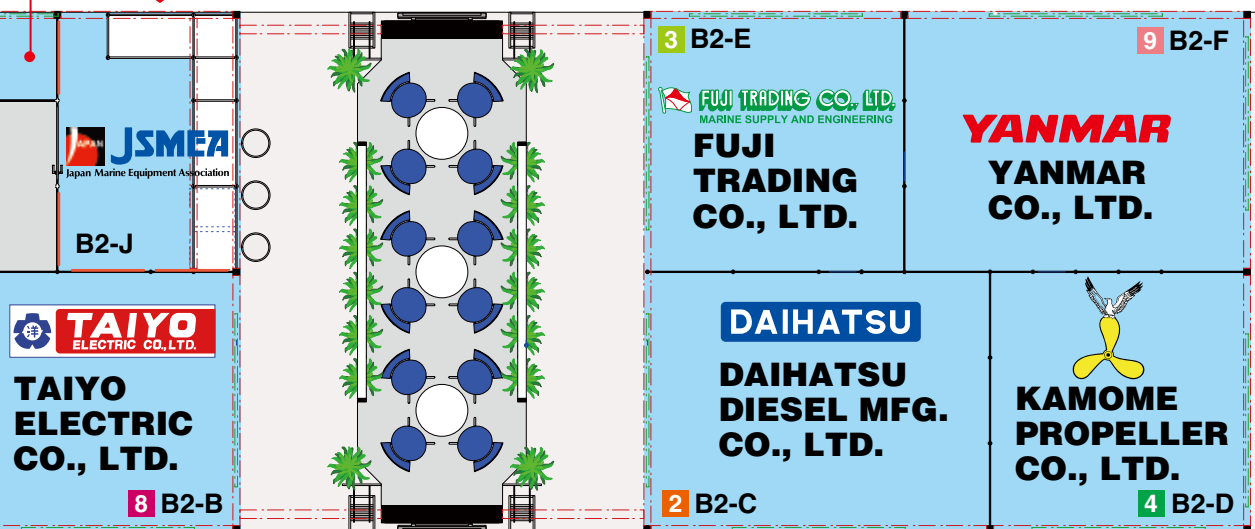
Hall-1



2



AKASAKA DIESELS LIMITED



Products and Services of Membership

Company	Booth No.	Products and Services	Company	Booth No.
8 TAIYO ELECTRIC CO., LTD.	B2-B	Propellers, controllable pitch	4 KAMOME PROPELLER CO., LTD.	B2-D
9 YANMAR CO., LTD.	B2-F	Propellers, fixed pitch	6 NAKASHIMA PROPELLER CO., LTD.	B2-I
7 SHINKO IND. LTD.	B2-H	Propulsion systems (electric)	4 KAMOME PROPELLER CO., LTD.	B2-D
8 TAIYO ELECTRIC CO., LTD.	B2-B		6 NAKASHIMA PROPELLER CO., LTD.	B2-I
4 KAMOME PROPELLER CO., LTD.	B2-D		2 DAIHATSU DIESEL MFG. CO., LTD.	B2-C
6 NAKASHIMA PROPELLER CO., LTD.	B2-I		4 KAMOME PROPELLER CO., LTD.	B2-D
7 SHINKO IND. LTD.	B2-H		6 NAKASHIMA PROPELLER CO., LTD.	B2-I
1 AKASAKA DIESELS LIMITED	B2-G		9 YANMAR CO., LTD.	B2-F
1 AKASAKA DIESELS LIMITED	B2-G	Pumps, ballast	7 SHINKO IND. LTD.	B2-H
1 AKASAKA DIESELS LIMITED	B2-G	Pumps, bilge	7 SHINKO IND. LTD.	B2-H
1 AKASAKA DIESELS LIMITED	B2-G	Pumps, boiler feed	7 SHINKO IND. LTD.	B2-H
1 AKASAKA DIESELS LIMITED	B2-G	Pumps, boiler water-circulating	7 SHINKO IND. LTD.	B2-H
8 TAIYO ELECTRIC CO., LTD.	B2-B	Pumps, cargo	7 SHINKO IND. LTD.	B2-H
2 DAIHATSU DIESEL MFG. CO., LTD.	B2-C	Pumps, centrifugal	7 SHINKO IND. LTD.	B2-H
2 DAIHATSU DIESEL MFG. CO., LTD.	B2-C	Pumps, deep well	7 SHINKO IND. LTD.	B2-H
9 YANMAR CO., LTD.	B2-F	Pumps, emergency fire	7 SHINKO IND. LTD.	B2-H
2 DAIHATSU DIESEL MFG. CO., LTD.	B2-C	Pumps, feed water	7 SHINKO IND. LTD.	B2-H
9 YANMAR CO., LTD.	B2-F	Pumps, fresh water	7 SHINKO IND. LTD.	B2-H
1 AKASAKA DIESELS LIMITED	B2-G	Pumps, liquefied natural gas (LNG)	7 SHINKO IND. LTD.	B2-H
2 DAIHATSU DIESEL MFG. CO., LTD.	B2-F	Pumps, liquefied petroleum gas (LPG)	7 SHINKO IND. LTD.	B2-H
9 YANMAR CO., LTD.	B2-C	Pumps, lubricating oil	7 SHINKO IND. LTD.	B2-H
9 YANMAR CO., LTD.	B2-F	Pumps, reciprocating	7 SHINKO IND. LTD.	B2-H
1 AKASAKA DIESELS LIMITED	B2-G	Pumps, tank cleaning	7 SHINKO IND. LTD.	B2-H
8 TAIYO ELECTRIC CO., LTD.	B2-B	Pumps, vacuum	7 SHINKO IND. LTD.	B2-H
8 TAIYO ELECTRIC CO., LTD.	B2-B	Remote control devices for diesel	1 AKASAKA DIESELS LIMITED	B2-G
8 TAIYO ELECTRIC CO., LTD.	B2-B	Rudders, high lift	4 KAMOME PROPELLER CO., LTD.	B2-D
5 KANAGAWA KIKI KOGYO CO., LTD.	B2-A	Separators, oil & water	5 KANAGAWA KIKI KOGYO CO., LTD.	B2-A
8 TAIYO ELECTRIC CO., LTD.	B2-B	Shaft equipments	6 NAKASHIMA PROPELLER CO., LTD.	B2-I
5 KANAGAWA KIKI KOGYO CO., LTD.	B2-A	Starters	8 TAIYO ELECTRIC CO., LTD.	B2-B
8 TAIYO ELECTRIC CO., LTD.	B2-B	Steam turbines, auxiliary	7 SHINKO IND. LTD.	B2-H
8 TAIYO ELECTRIC CO., LTD.	B2-B	Strainers	5 KANAGAWA KIKI KOGYO CO., LTD.	B2-A
7 SHINKO IND. LTD.	B2-H	Switchboards	8 TAIYO ELECTRIC CO., LTD.	B2-B
4 KAMOME PROPELLER CO., LTD.	B2-D	Thrusters	6 NAKASHIMA PROPELLER CO., LTD.	B2-I
8 TAIYO ELECTRIC CO., LTD.	B2-B	Thrusters, bow	4 KAMOME PROPELLER CO., LTD.	B2-D
8 TAIYO ELECTRIC CO., LTD.	B2-B	Thrusters, side	4 KAMOME PROPELLER CO., LTD.	B2-D
8 TAIYO ELECTRIC CO., LTD.	B2-B	Wheelhouse control consoles	8 TAIYO ELECTRIC CO., LTD.	B2-B
8 TAIYO ELECTRIC CO., LTD.	B2-B	Wheelhouse group panels	8 TAIYO ELECTRIC CO., LTD.	B2-B
7 SHINKO IND. LTD.	B2-H			
4 KAMOME PROPELLER CO., LTD.	B2-D	Trades & Technical Services	3 FUJI TRADING CO., LTD.	B2-E



AKASAKA DIESELS LIMITED

Booth No. **B2-G**

<http://www.akasaka-diesel.jp>

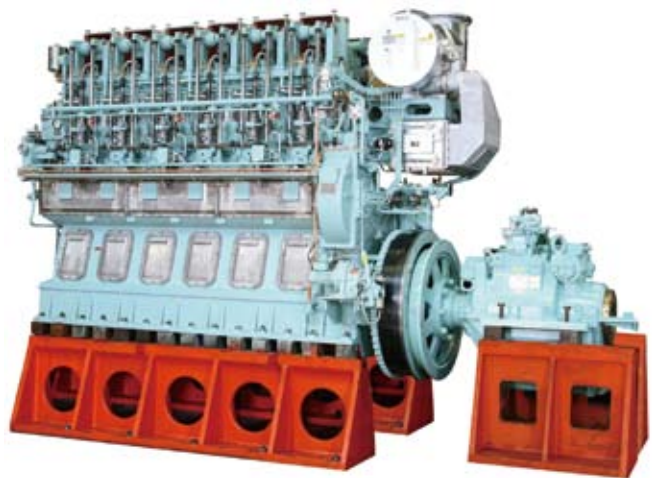
Most highly recommended

My name is Yukihiro Komiya of Akasaka Diesel Limited. We are pleased to introduce the latest 2 stroke diesel engine model of "Akasaka - Mitsubishi UEC35LSE" (4,350kW-6,960kW /167min-1). This engine is to be installed on 12,000 to 17,000DWT bulk carriers. The advantage of this engine is the lowest fuel oil consumption in this class of diesel engine, i.e. 169.7 g/kWh at NR. In conjunction with MPL (Mechanical Pulse Lubricating) System or ECL (Electronically Controlled Lubricating) System this engine will bring the lowest operation cost to ship owners.



Outline of Company

Akasaka Diesels Limited is a Japanese leading manufacturer of main engines for cargo ships, tankers, bulk carriers and fishing boats. Akasaka Diesels can look back its establishment as an engine repair shop in Yaizu, a fishery town in Shizuoka prefecture, in 1910. Today its products are known worldwide by its high-reliability and fine performances based on authentic technologies being succeeded over generations. On the other hand, situations and demands are always variable and they never allow us to stop challenging to the technology and the market. Akasaka Diesels is always ready to support you with diligence and sincerity, which will surely meet your expectations.



AX33B 1,618kW / 310min-1

Main Products

4 Stroke Diesel Engine:

Akasaka Diesel Engine

TYPE A / AX (1,103kW~3,309kW)

TYPE K / E (956kW~1,618kW)

TYPE AH / U (2,942kW~2,427kW)

2 Stroke Diesel Engine:

UE Diesel Engine

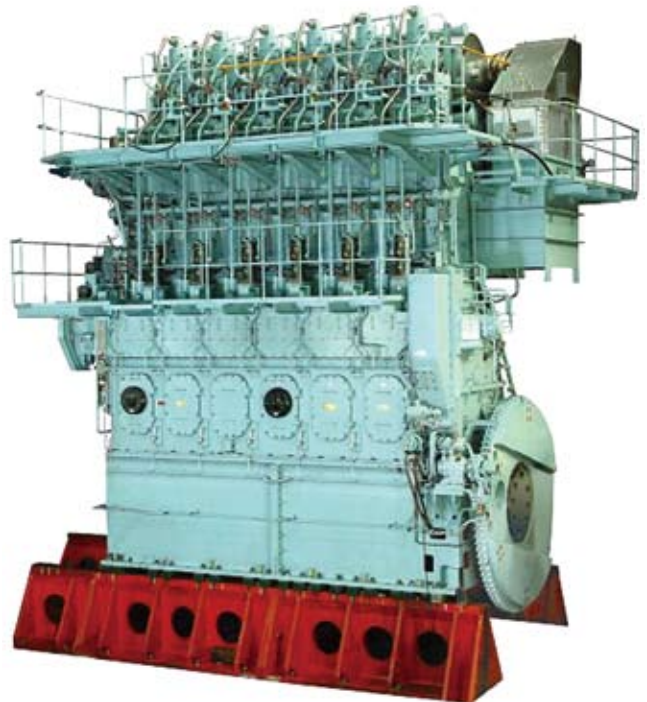
(licensed by Mitsubishi Heavy Industries, Ltd.)

UEC50LSE / UEC45LSE / UEC35LSE

(4,350kW~13,280kW)

UEC50LS II / UEC43LS II / UEC37LS II /

UEC33LS II (2,830kW~11,560kW)



6UEC45LSE 7,470kW / 130min-1

Head Office (for Overseas market)

14th Floor, South Tower, Yurakucho Denki Building, 1-7-1 Yurakucho, Chiyoda-Ku, Tokyo, Japan

Tel: +81-3-6860-9081 Fax: +81-3-6860-9083

E-mail: kaigaieigyoku@akasaka.co.jp

DAIHATSU**DAIHATSU DIESEL MFG. CO., LTD.**<http://www.dhtd.co.jp>**Most highly recommended**

My name is Ashida of Daihatsu Diesel. Our highly recommended product is New Model DE series of environment-friendly diesel engines. We have successfully developed an environmentally friendly engine with high potential and technological innovation for meeting future emission regulations that are becoming strict day by day, such as reduction of Nox and Sox emissions. Come to this exhibition and please visit our booth. We look forward to meeting you soon.



6DE-18



6DE-23

Outline of Company

Since its establishment in 1907, Daihatsu Diesel Mfg. Co., Ltd. has pioneered the ages and has maintained a first rate position in the Diesel engine business. Our Diesel engines in the 300 to 7000kW range has been very popular in both the overseas and home markets, confirming Daihatsu Diesel as the leading company in this field.

Main Products

- Marine Propulsion and Auxiliary Diesel Engines
- Oil Mist Detector MD-SX

Features of New Model DE Engine

- DE Engine is designed to achieve conformity with IMO NOx regulations Tier 2 and Tier 3, compatibility to low sulfur fuel oil, and reduction of CO2 emissions with low fuel consumption and smokeless.
- DE Engine is designed to reduce navigation costs by enhancing the durability of parts, achieving the low lubricating oil consumption and the fuel consumption, and realizing simple maintenance finished in a short time.
- Perfect fire prevention measures have been taken to the New Model DE Engine. And the engine is designed to have simplified connection points for easier installation. Above all, we have adopted the engine controller with easy handling.

Tokyo Office

16-11, Nihonbashi 1-Chome, Chuo-ku, Tokyo, 103-0027 Japan
Tel: +81-3-3279-0827 Fax: +81-3-3245-0359

Liaison Offices**Daihatsu Diesel (ASIA PACIFIC) Pte. Ltd.**

128 Pioneer Road Singapore 639586
TEL: 65-6270-7235 FAX: 65-6270-6236

FUJI TRADING CO., LTD.

<http://www.fujitrading.co.jp>

Most highly recommended

My name is Hashimoto of Fuji Trading Co., Ltd. As you see from the following map, we have formed our global network with our group companies and representative offices around the world. With this network, we are ready to provide the professional services anytime, anywhere. At the ports marked in red circle, engineering services are available by our engineers. Whenever you need technical services, please contact us.



Outline of Company

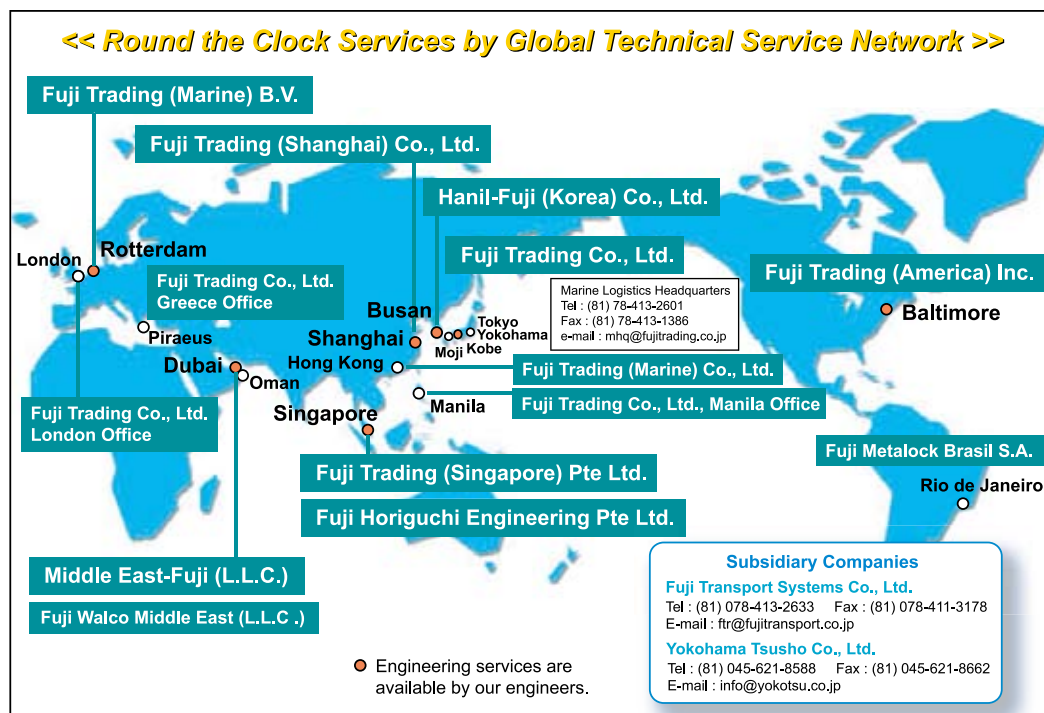
Fuji Trading Co., Ltd. was established as a marine supplier in 1953 at Kobe, Japan. Over a half century since then, we have expanded and diversified into a supplier of technology, offshore drilling equipment and machinery as well as a developer of new markets and business opportunities.

We procure the goods required by customers who travel around a unique market of "Marine" on a global scale by ship, and supply them within a limited time.

Through our business activity, we contribute to the world trade by supporting smooth and economical ship's operation. In order to execute our task, we give the highest priority to the partnership with our customers, business acquaintances and makers. We are now upgrading and integrating our three functions: information, procurement, and physical distribution.

6 Main Services

- Machinery Equipment Sales
- Engineering Service
- Spare Parts Supply Service
- Ship's Stores & Provisions Supply Service



Head Office

Marine Logistics Headquarters

6, Fukaehamamachi, Higashinada-ku, Kobe 658-0023, Japan
 Tel: +81-78-413-2601 Fax: +81-413-1386
 e-mail: mhq@fujitrading.co.jp

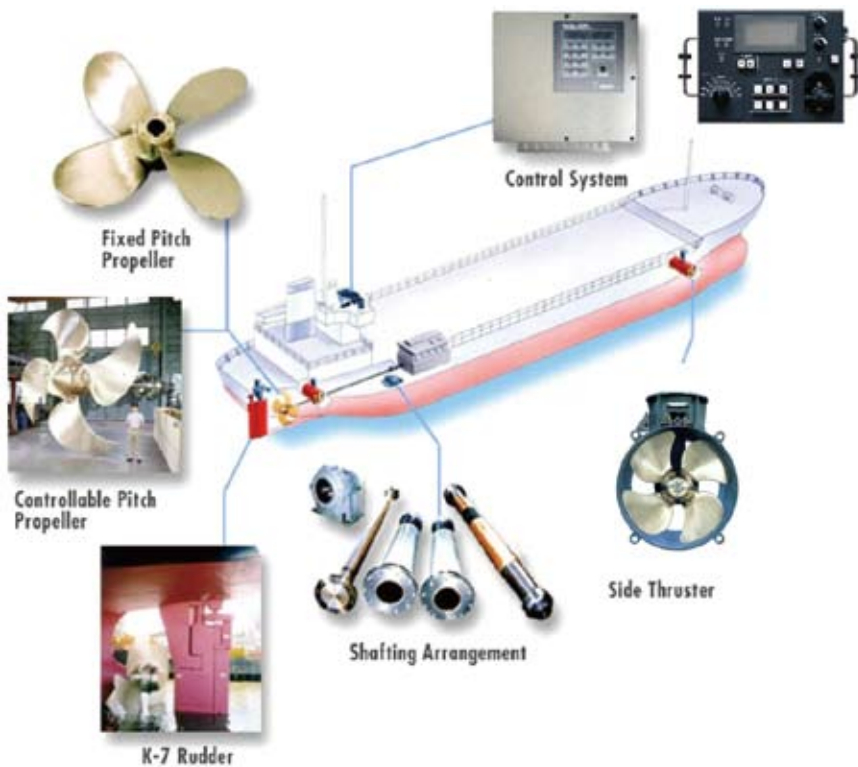


KAMOME PROPELLER CO., LTD.

<http://www.kamome-propeller.co.jp>

Most highly recommended

My name is Koyama of Kamome Propeller Co., Ltd. FPP (Fixed Pitch Propeller) and CPP (Controllable Pitch Propeller) as well as Side Thruster, High Lift Flap Rudder and Remote Control System are manufactured. Recently, we supply our products together with other equipments such as Gearbox, Shaft Generator, High Speed Shaft and etc. as propulsion package especially for Offshore Support Vessels. Based on our many experiences for designing and manufacturing efficient propellers, we design and suggest total propulsion systems which are optimum for various needs of the customers. Kamome CPP adopts Push-pull rod system which is most reliable mechanism for changing propeller pitch and easier maintenance than other systems. We exhibit our actual CPP blade and CPP miniature model in SMP World Expo. Please visit our booth to see our high quality.



Outline of Company

Since the company's establishment in 1924, we have consistently devoted ourselves to manufacturing propulsion and maneuvering systems for ships. Among our products more than 5,000 sets of Kamome's CP Propeller together with its control system has been manufactured and applied for various kinds of ships all over the world.

Main Products

- Fixed Pitch Propeller
- Controllable Pitch Propeller
- Side Thruster
- High Lift Flap Rudder
- Optimum Propulsion Control System
- Joystick Control System

Features

Excellent operative performance and construction by new research and extensive experience
Strong structure and thoughtful design for assembly and maintenance
Original control system for operating efficiency Various application for various type ships
Continuous investigation for propeller efficiency and anti-vibration/noise

Head Office

International Operation Dept.
690 Kamiyabe-cho, Totsuka-ku, Yokohama-shi, kanagawa-ken
245-8542, Japan
Tel: +81-45-811-2461 Fax: +81-45-811-9444
E-mail: info@kamome-propeller.co.jp
PIC: Mr. Norihiro KOYAMA



KANAGAWA KIKI KOGYO CO., LTD.

Booth No. **B2-A**

<http://www.kanagawa-kiki.co.jp>

Most highly recommended

My name is Matsuo of Kanagawa Kiki Kogyo Co., Ltd. Kanagawa Kiki Kogyo's original filtration systems "Notch wire element" boasts a semi-permanent lifetime and needs no replacing. "Notch wire element" is comprised of a specially fabricated stainless wire, "notch wire," wound around a cylindrical filter frame. Due to the simple structure and robust shape of notch wire element, the filtration size can be configured with high precision. In addition, notch wire element needs no replacing because it does not corrode or change in quality and impurities on the element can be easily removed by back washing or air blow. Thus the lifetime of notch wire element is virtually semi-permanent. Due to its high reliability, notch wire element has been adopted also by the Defense Ministry, Japan Coast Guard and others in large quantities.



Outline of Company

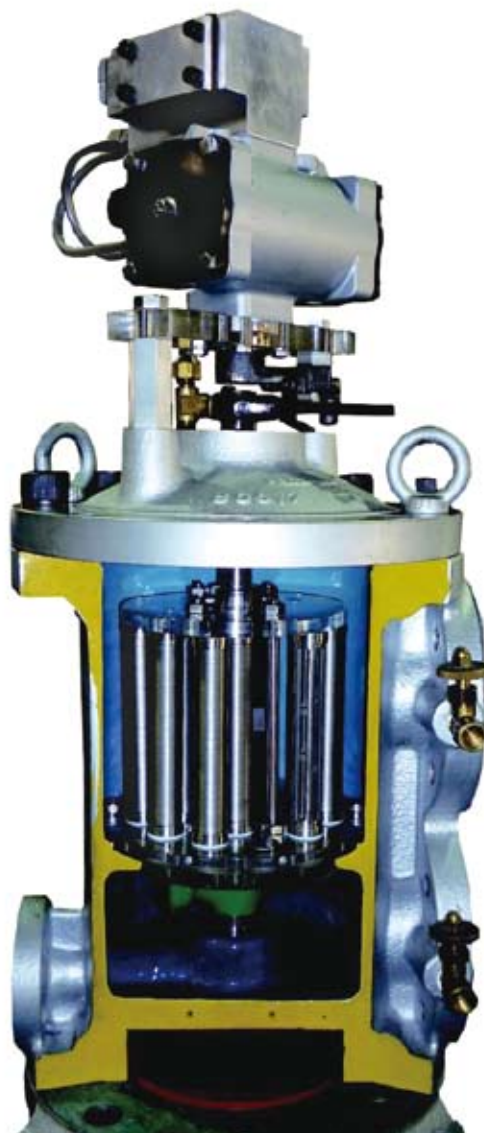
We, Kanagawa Kiki Kogyo Co., Ltd. have been an expert manufacturer of strainer and filter for marine use since our establishment in 1951. All Japanese shipyards and diesel engine builders use our products as the standard. Our main products are The Notch-Wire Element, which is used in auto-backwash type filters, such as K8E-type for lub.oil and K8FE-type for fuel oil. We are confident that customers will be satisfied with our products. We have the certificate of ISO9001 international quality system and ISO14001 environmental system.

Main Products

- Automatic backwashing fuel oil strainer
- Notch Wire Element
- Duplex type strainer

Features

K8FE strainer has a self-cleaning function for the filter elements, using automatic backwashing without interruption of oil supply. During backwashing, sludge caught on the filter elements is discharged by the intermittent and partial reverse flow of filtered liquid. This helps maintain the normal performance of the filter elements.



Head Office

No.19-1, OKAMURA 8 CHOME, ISOGO-KU, Yokohamashi, Kanagawa-ken 235-0021, JAPAN
Tel: +81-45-753-3800 Fax: +81-45-755-0089



<http://www.nakashima.co.jp/en>

Most highly recommended

My name is Yamakawa of Nakashima Propeller Co., Ltd. "A hundred different vessels will have a hundred different propellers." There are various types of vessels-all of which require a specific type of propeller. The required type of propeller also differs according to the engine and navigation route. Nakashima Propeller considers these factors in a comprehensive manner, determines the optimum combination, and manufactures the product based on the concept of high-quality built-to-order production. Nakashima's Design Department develops high-performance and optimally shaped propellers by utilizing technologies accumulated over many years and performing fluid-structure analysis. In the production process, machine processing using special equipment is combined with the sensitivities and skills of our experienced craftsmen in order to precisely reproduce design data and produce high-quality propellers. Nakashima Propeller has established its unique built-to-order production process by applying all of these technologies in an optimal fashion while accumulating data in order to achieve even more advanced manufacturing.



FIXED PITCH PROPELLER

Outline of Company

Nakashima Propeller is the leading company of marine propulsion specialists in the world. Since founded in 1926, we have continuously been advancing to be the world's only comprehensive designers/manufacturers of marine propulsion equipment applicable to a wide range from smaller-sized pleasure boats and fishing boats up to large-sized merchant vessels including ULCC, mega container vessels, and LNG carriers, by utilizing enriched experiences

Main Products

- Fixed Pitch Propeller
- Controllable Pitch Propeller
- Side Thruster
- Shafting Equipment

Contact

688-1, Joto-Kitagata, Higashi-ku, Okayama 709-0625, Japan
Tel: +81-86-279-5111 Fax: +81-86-279-3107
E-mail: npcwebmaster@nakashima.co.jp



<http://www.shinkohir.co.jp/indexe.htm>

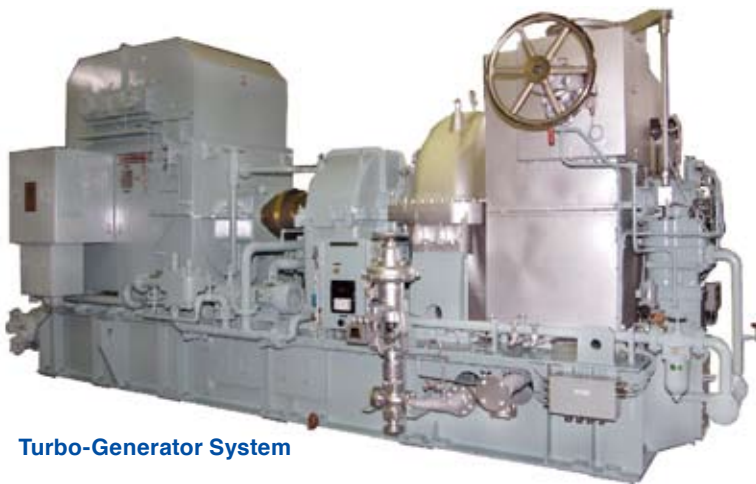
Outline of Company

President Kanji Tsutsui
Capital Paid J.Yen200,000,000.-Employee 661 persons
Since the foundation in 1938, SHINKO has been paying a special attention to developing high quality products and prompt after-sales service. Particularly, we have received high evaluations for cargo pump and its turbine of crude oil tankers from many shipyards in the world, consequently achieving more than 70% of the world share.

Main Products

- Various engine room pumps for marine use
- Cargo unloading system for tanker
- LPG pump / LNG pump
- Steam turbine for energy saving

10



Turbo-Generator System



Cargo Oil Pump & Turbine



Engine Room Pump



LNG Pump / LPG Pump

Contact

5-7-21, Ohzu, Minami-ku, Hiroshima-shi, Hiroshima-ken
732-0802, Japan
Tel: +81-82-508-1000 Fax: +81-82-508-1020
E-mail: master@shinkohir.co.jp
Branch Office: Tokyo, Kobe, Shanghai, Amsterdam, Bangkok, Singapore

TAIYO ELECTRIC CO., LTD.

<http://www.taiyo-electric.co.jp>

Most highly recommended

My name is Keno Ono of Taiyo Electric. We have been providing marine specialized dependable products including energy saving & eco-friendly products. We would like to introduce our new eco-friendly product which is PWM Power Supply System for this time. This inverts DC power from various sources via DC link and supplying AC power with sine wave. Our PWM Power Supply System contributes to supply green power to ships.



Outline of Company

Taiyo Electric Co., Ltd. has assisted in providing sophisticated, high level technology for a wide variety of ships since its founding in 1917. We have been widely recognized in the world's shipping and shipbuilding industries as a total supplier of marine equipment. Taiyo Electric continue to make effort to contribute the world's shipping and shipbuilding industries by offering sophisticated products including energy-saving and eco-friendly products.



Main Products

- Generators
- Motors
- Shaft Generator
- Ventilation Fans
- Switchboard
- Console
- Starters
- Inverter Speed Control System

Shaft Generator

Head Office

Sanritsusha Bldg., 16-8, 1-chome, Uchikanda, Chiyoda-ku, Tokyo 101-0047 Japan
Tel: +81-3-3293-3067 Fax: +81-3-3292-7012
URL: <http://www.taiyo-electric.co.jp>

Agent in India

Maritronics India Pvt. Ltd.

176, Sector-17, Nerul (East)
Navi Mumbai-400 706. India
Tel: +91-22-27700618 Fax: +91-22-27700620
E-mail: service@maritronicsindia.com

YANMAR

YANMAR CO., LTD.

<http://www.yanmar.co.in>

Most highly recommended

My name is Ishikawa of Yanmar India Private Limited. The concepts behind the 6EY22 engine of "Improving Life Cycle Value" and "Harmony with the Environment" deliver customer satisfaction by offering solutions for both economy and environmental protection.

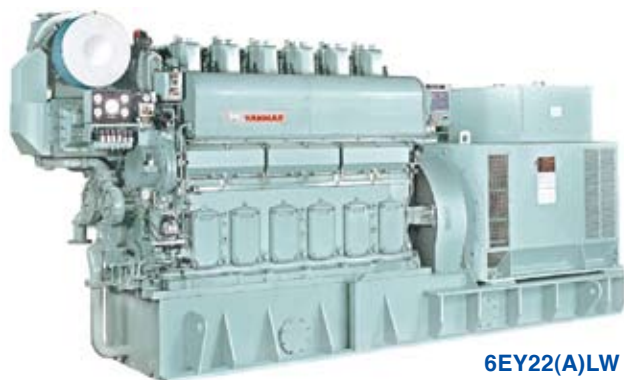


Outline of Company

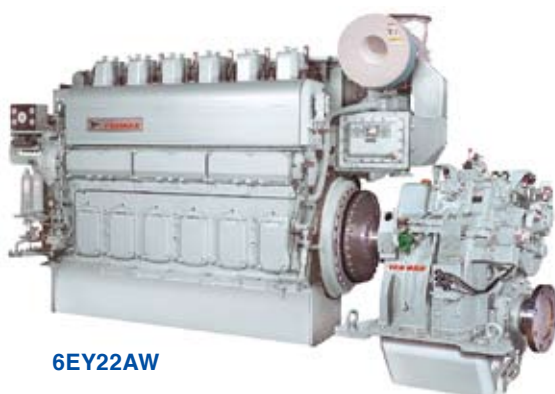
YANMAR celebrates its 100th anniversary in 2012. With the approach of these milestones, YANMAR's world-class diesel engines are constantly evolving and we contribute to provide the engines, systems and services that are safe, friendly to our environment and most helpful to the people engaged in the maritime business all around the world.

Main Products

Marine propulsion and auxiliary diesel engines



6EY22(A)LW



6EY22AW

Features

Type 6EY22

1. It is based on the two core concepts of raising Life Cycle Value and Harmony with global environment.
2. Contamination of combustion chamber is controlled by "contamination control technology" and "equipment of contamination resisting application".
3. Compact design allows simplicity in the engine room layout.
4. The number of parts has been reduced, further increasing ease of maintenance.
5. With concentration of the pipe connections at the front of the engine, piping construction man-hour are reduced.
6. Low fuel consumption and complying with IMO Tier were achieved at the same time by adopting the high pressure miller cycle system.

Head Office

1-32, Chayamachi, Kita-ku, Osaka 530-8311 Japan

Tokyo Office

Export Dept, Large Product Marketing Dept. Large Power Products Operations Division
1-1, Yaesu 2-Chome, Chuo-ku, Tokyo 104-0028, Japan
Tel: +81-3-3275-4909 Fax: +81-3-3275-4969

Group Company

YANMAR INDIA PRIVATE LIMITED

603, Maithili Signet, Near Vashi Rly Stn. Sector-30A, Vashi Navi Mumbai 400 703.

Tel: +91-22-4155-5304 Fax: +91-22-4155-5310

HIROSHI ISHIKAWA Vice President, Chief Regional Officer for Mumbai Branch

SEMINAR ON JAPANESE MARINE EQUIPMENT INDIA-JAPAN DAY SEMINAR

9th February 2012 (15:30-17:40)

Bombay Exhibition Centre (Seminar room)

15:30-15:40 WELCOME ADDRESS

15:40-16:00

YANMAR YANMAR CO., LTD.

"INTRODUCTION OF YANMAR"

Speaker : Hiroshi Ishikawa

Vice President, Yanmar India Private Ltd.

16:00-16:20



AZUMA KAKO CO., LTD.

"MARINE ENGINE PARTS RECONDITIONING"

Speaker : Yukinori Sakai

M.D., Azuma Singapore

16:20-16:40

DAIHATSU DAIHATSU DIESEL MFG. CO., LTD.

"DAIHATSU DIESEL LAUNCHED NEW ENVIRONMENT-RESPONSIVE DIESEL ENGINES 6DE-18 & 6DE-23"

Speaker : Junya Asano

Chief Engineer

Engine Design Section Technical Department

Moriyama Division

16:40-17:00



KAMOME PROPELLER CO., LTD.

"PRODUCTS AND APPLICATIONS"

Speaker : Hiroshi Itazawa

President

17:00-17:20



MITSUBISHI HEAVY INDUSTRIES, LTD.

"MITSUBISHI TWO-STROKE DIESEL ENGINE -UE-"

Speaker : Yohei Tsuji

Licensing & Project Planning Section Marine

Diesel Engine Department

17:20-17:40



AKASAKA DIESELS LIMITED

"OUTLINE OF AKASAKA DIESELS AND PRODUCTS"

Speaker : Yukihiro Komiya

General Manager Overseas Business Group

Gist of JSMEA's Action Plan 2011 In Pursuit of Greater International Competitiveness and Further Animated Industrial Activities

1. Promotion of communication and collaboration within industry and outside

(1) Strengthening of communication and collaboration within industry

- Response to reform of public-interest entity system
- Further vitalization of sector-by-sector working groups, etc.
- Regarding the Conference of Next-Generation Marine Equipment Business Managers, etc. (Next-Generation Conference?)
- Anti-imitation measures
- Responses to regulatory issues in and out of Japan
- Promotion of membership expansion
- Collaboration with regional marine equipment associations

(2) Promotion of communication and collaboration with client industries

- Shipping industry • Shipbuilding industry
- Government agencies • Others

(3) Specific actions in collaboration with client industries

- Research on establishment of verification technology for engines equipped with SCR system (FY 2010-2012)

2. Promotion of retention and development of human resources

14

- Positive actions to retain and develop human resources
- Recognition of Marine Equipment Meisters
- Retention of human resources
- Education of working adults

3. Positive contribution to safety and environmental conservation

(1) Strengthened responses to regulation by IMO, etc.

(2) Actively addressing environmental issues

- R&D of "Super-clean Marine Diesel" (FY2009-2011)
- Matters related to energy-saving
- Ship recycling

4. Vitalization of technological development

(1) Financial aid to new product development

- Projects of financial aid to new product development

(2) Background improvement for vitalization of new product development

- FS projects
- Study conferences
- Marine Technology Forum
- Discussion on vitalization of technological development

5. Encouragement of global presence

(1) Background improvement for global presence

- Promotion of international exchanges
- Discussion of medium- to long-term global perspective

(2) Reinforcement of international public relations and publicity

- International exhibitions and seminars, and visits to shipowners and shipbuilders
 - International newsletter JSMEA NEWS
-



NOR-SHIPING 2011
26th MAY 2011

JSMEA-led delegation visits STX Norway Offshore AS in Brevik, Norway.



NAVALSHORE 2011
2th AUG.2011

JSMEA Vice-Chairman Yukinobu Fujimoto (left) and Executive Secretary Sergio Leal of the Brazilian Association of Shipbuilding, Shiprepair and Offshore Industries (SINAVAL) sign the Cooperation Agreement Between SINAVAL and JSMEA in Rio de Janeiro, Brazil.



Marintecchina 2011
28th NOV.2011

JSMEA concludes an agreement to use genuine marine equipment with the China Association of the National Shipbuilding Industry (CANSI). Photo shows JSMEA Chairman Zenshichi Akasaka (left) shaking hands with CANSI Executive Vice-President Li Zhushi in Shanghai, China.



Light Box, an illuminated signboard, is displayed in the Exhibition Hall.

Marintec China 2011
30th NOV.2011 – 1th DEC.2011

JSMEA seminar in China



JSMEA

Japan Marine Equipment Association

● **Head Office**

5th Floor, Toranomon Toyo Building, 13-3,
Toranomon 1-chome, Minato-ku, Tokyo 105-0001, Japan
Tel: +81-3-3502-2041 Fax: +81-3-3591-2206
E-mail: info@jsmea.or.jp
URL: <http://www.jsmea.or.jp>

● **Overseas Offices**

● **Japan Ship Centre (JETRO), Ship Machinery Department**
Midcity place, 71 High Holborn, London WC1V 6AL, U.K.
Tel: +44-207-421-8300 Fax: +44-207-421-0009
URL: <http://www.jsc.org.uk>

● **JETRO Shanghai**

Ship Machinery Department
21st Floor, Shanghai International Trade Centre, 2201,
Yan An Xi Road, Shanghai 200336,
People's Republic of China
Tel: +86-21-6270-0489 Fax: +86-21-6270-0499

● **JETRO Singapore**

Ship Machinery Department
Hong Leong Building, #38-05, 16 Raffles Quay,
SINGAPORE 048581
Tel: +65-6429-9522 Fax: +65-6224-1169

