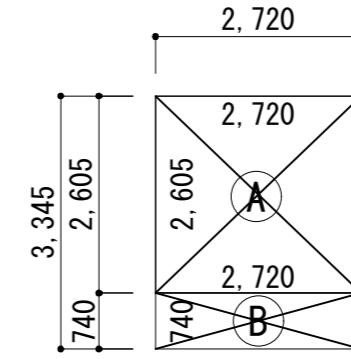
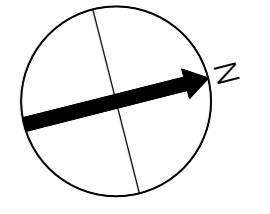


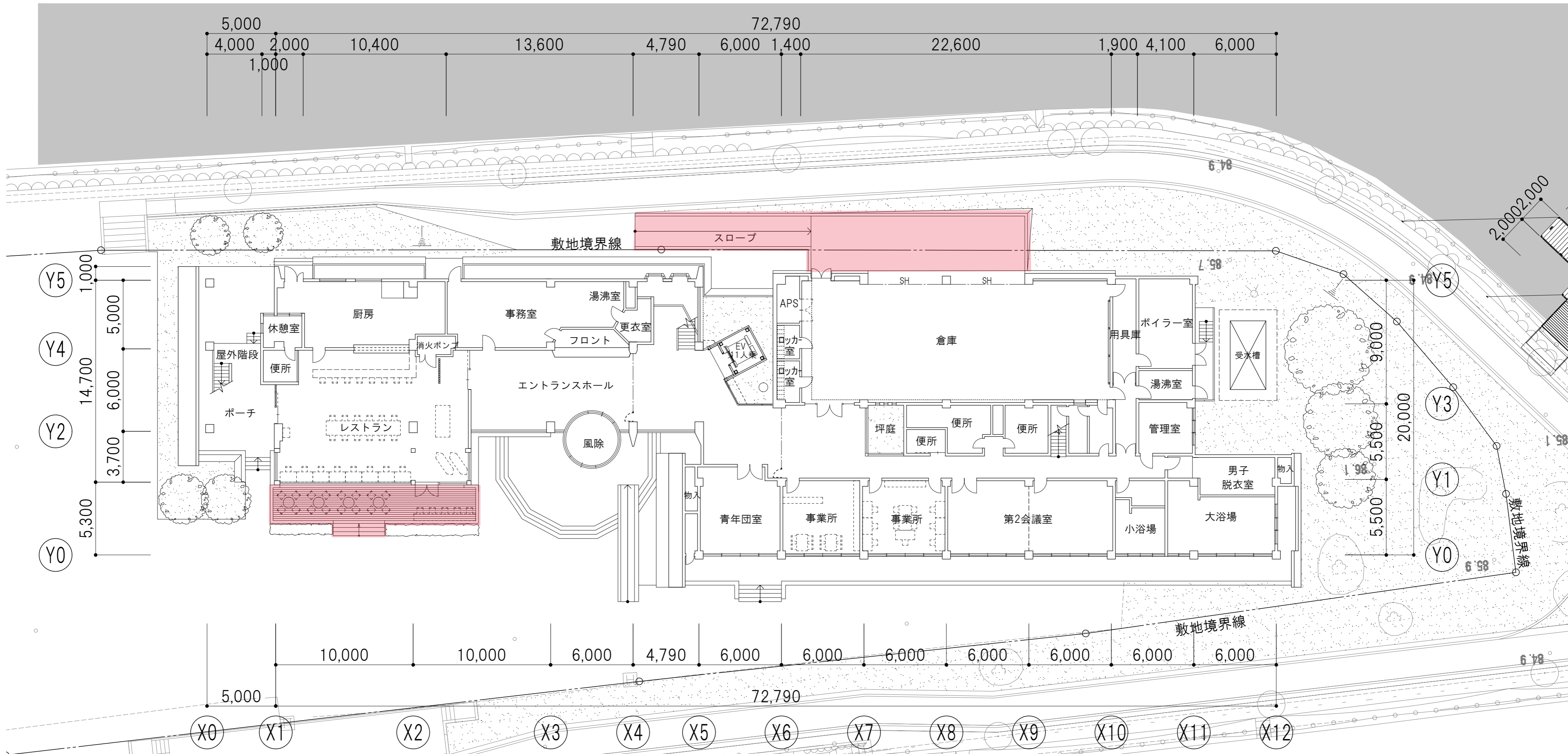
現況 1階平面図 S=1/300

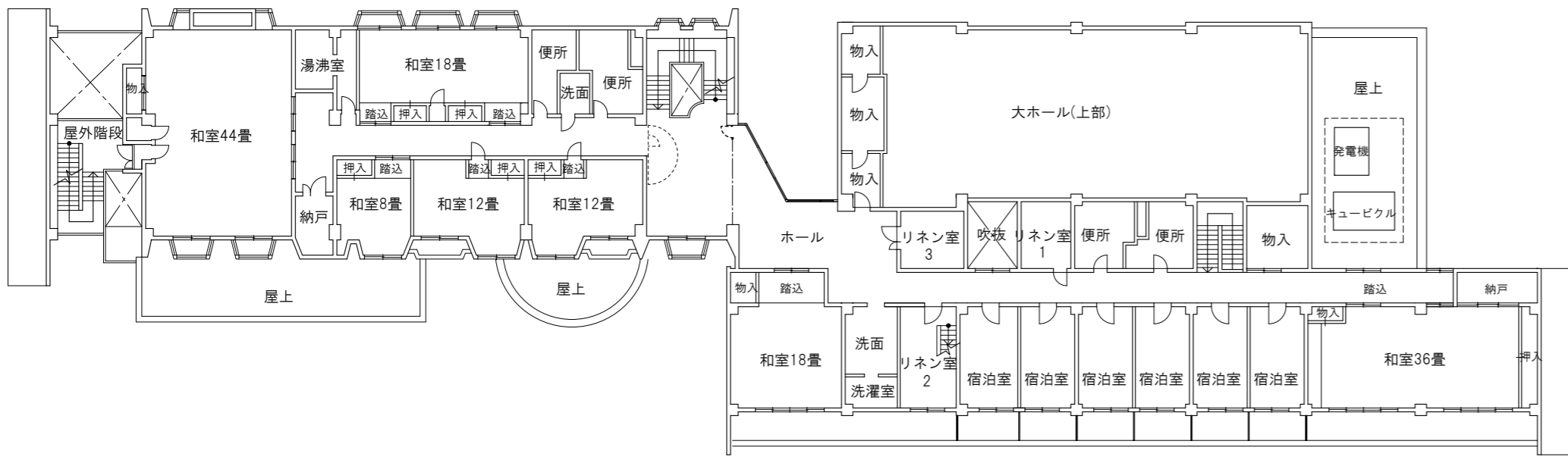


増築部分	建築面積・床面積算定図
A	2.720 x 2.605 = 7.0856
B	2.720 x 0.740 = 2.0128
建築面積 A+B = 9.0984 m ²	
床面積 EV部	Ax3 = 21.2568 m ²
踊場部	Bx3 = 6.0384 m ²
合計 27.2952 m ²	

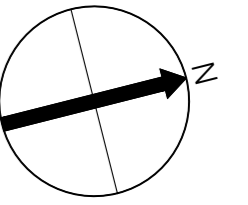


増築部求積図 S=1/100

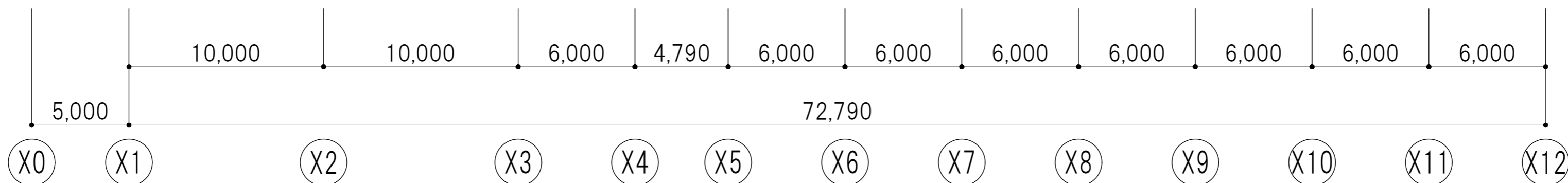
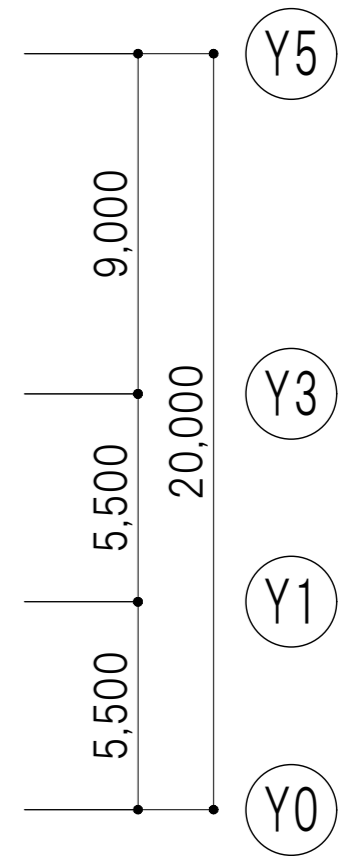
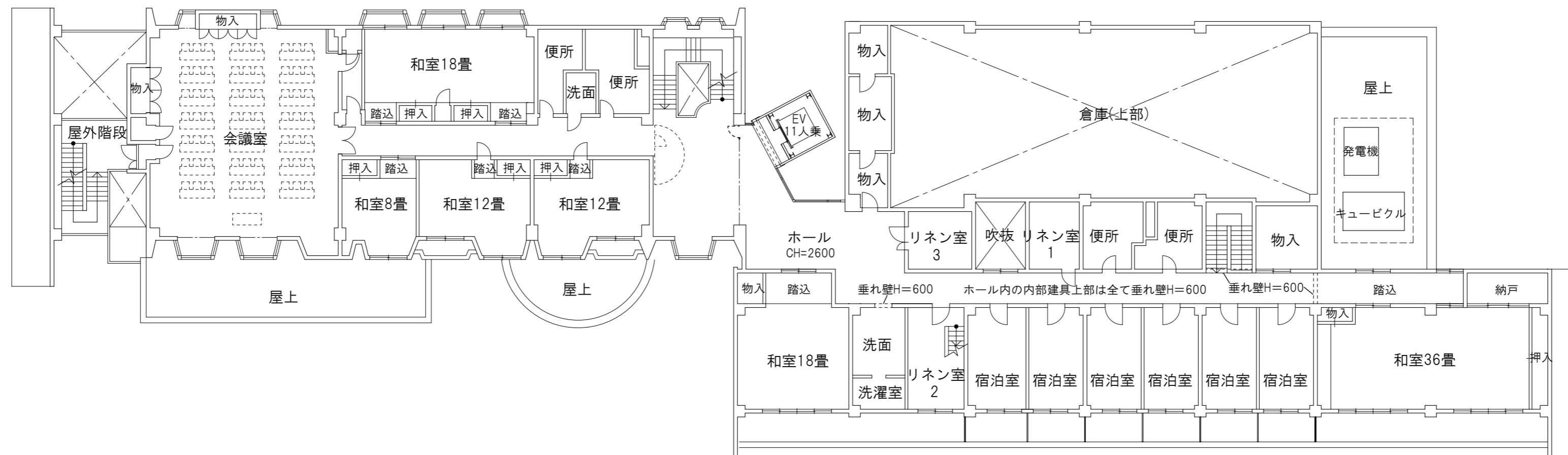
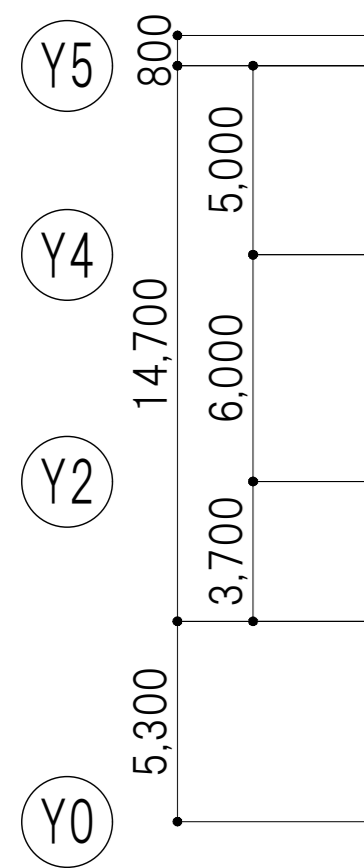
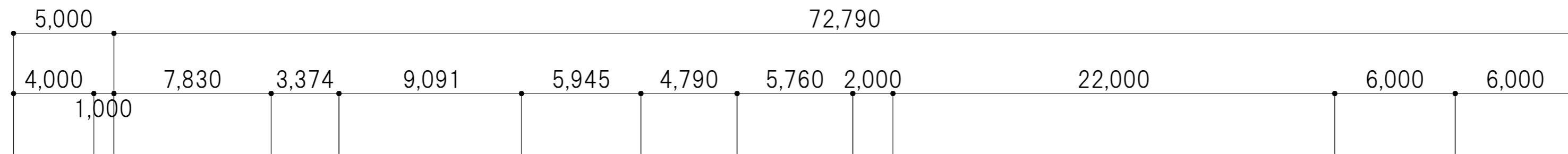


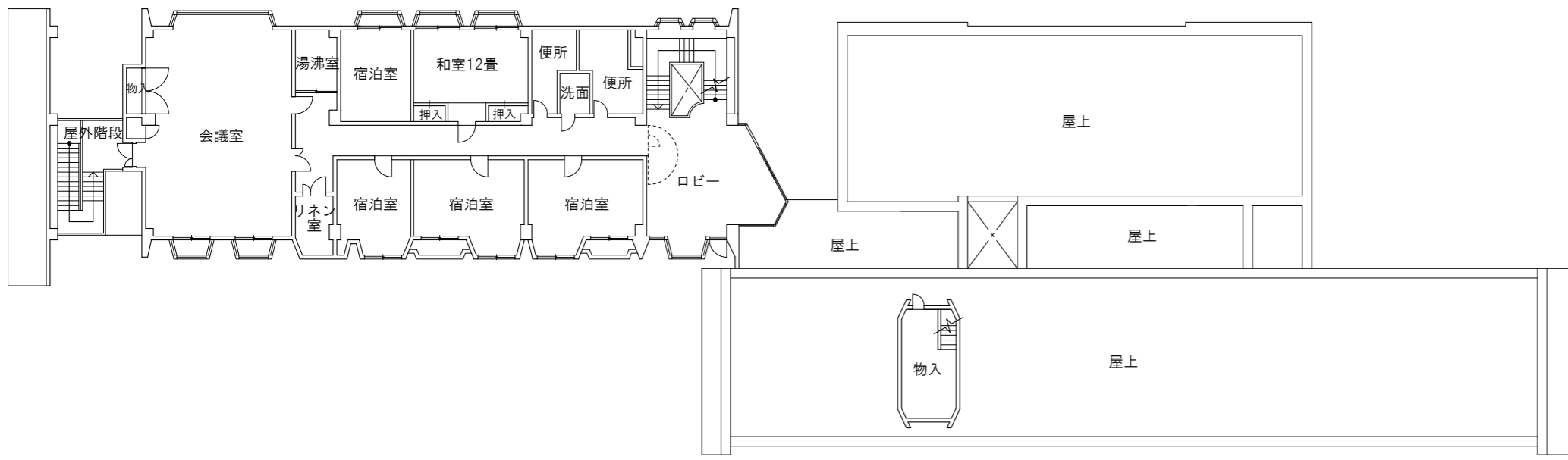


現況 2階平面図 S=1/300



ホール	
A	84.24㎡
S	平12建告1436号第4ハ(2)





現況 3階平面図 S=1/300

