



図 20 機関シミュレーター

(2) ASIMAR (Asian Marine Service Public Company)造船所

ASIMAR 造船所は 1981 年に Asian Marine Services Company として設立され、1990 年に Asian Marine Public Company (ASIMAR)に改称され、修繕業務を主体に、新造船建造も積極的に進めている。

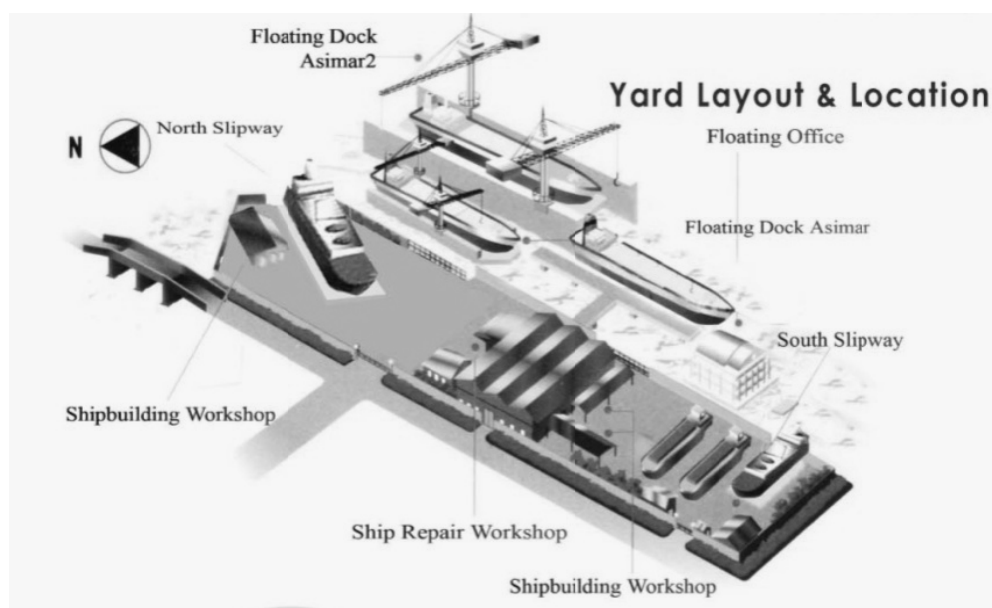


図 21 ASIMAR 造船所全体図

敷地面積 : 36,000 m² (9 Acre)
艀装岸壁 : 126 m , depth 12 m.
船台 : (北側) 1 x 125 m x 28 m
 :(南側) 1 x 80 m x 18 m
修繕最大 : 20,000 DWT
新造最大 : 120 m LOA.

フローティングドック <ASIMAR-1>

最大船舶 :6,000 DWT、L x B 97m x 19.6m.

最大リフティング :2,250 トン



図 22 No.1 フローティングドック

<ASIMAR-2>

最大船舶 :20,000 DWT, L x B 161m x 28.5m.

最大リフティング :8,200 トン



図 23 No.2 フローティングドック

442TEU コンテナ船

全長101.1 m、型幅 18.8 m、型深さ 9.3 m、喫水 7.3 m



図 24 442TEU コンテナ船

50 M. Well Test/Stimulate Supply Vessel



図 25 50m サプライボート

タンカー改造(ダブルハル化・船体延長)



図 26 タンカー改造

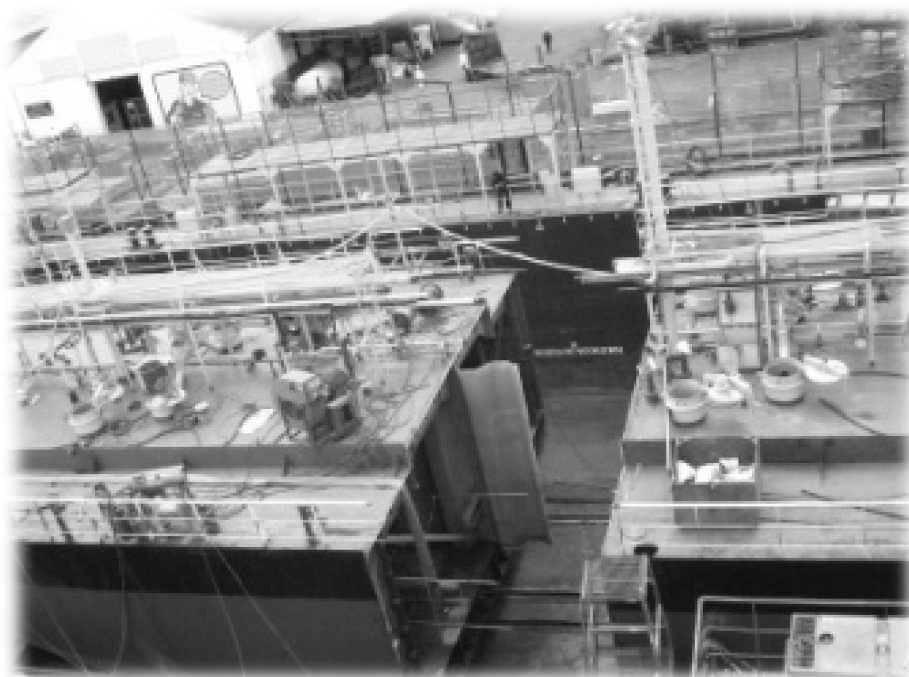


図 27 タンカー改造

2.4.2. タイ造船・修繕工業会主要会員リスト

表 24 タイ造船工業会会員リスト

タイ造船・修繕工業会主要会員 (MEMBERS OF THAI SHIPBUILDING AND REPAIRING ASSOCIATION)

No	会社名	業種	住所	電話/FAX/メール	連絡先・責任者
1	Italthai Marine Limited	Shipyard	389 Soi Italthai, Taiban Rd. Tambol Taiban, Amper Muang, Samutprakam 10280 Thailand	Tel: 66-2 387 1056, 387 1059, 387 1061, 387 2778 Fax: 66-2 387 1063 E-mail: wirat@italthaimarine.com www.Italthaimarine.com	Mr. Wirat Chanasit
2	Marsun Company Limited	Shipbuilding & Repairing	413 Moo 4, Soi Sitthichai, Taiban Road, Amphur Muang, Smut Prakran 10280, Thailand	Tel: 66-2 173 8942-48 Fax: 66-2 173 8949 E-mail: contact@marsun.th.com www.marsun.th.com	Mr. Yong Nonsopa
3	Harin Shipbuilding Company Limited	Steel Shipbuilding & Repairing	38 Mahaisawan Road, Bangkholaem Bangkok 10120, Thailand	Tel: 66-2 689 0667-9, 6891656 291 1841 Fax: 66-2 291 1310 E-mail: hp@haringroup.com www.haringroup.com	Mr. Amphol Harinsuit
4	Prakamkolkam Dockyard Ltd. Part	Building & Repair of Fishing Trawlers	1121 Moo 1, Sukhumvit Rd. Tumbol Barrngpoomai, Amphur Muang Samutprakarn 10280, Thailand	Tel: 66-2 709 1330, 709 1396 Fax: 66-2 709 1329 E-mail: prakam_shipyard@hotmail.com	Mr. Somwong Meeboon

No	会社名	業種	住所	電話/FAX/メール	連絡先・責任者
5	Thai Kolon Company Limited	Shipbuilding & Repairing	1093/78 16th FL. Central City Tower Moo 12, Bangna-Trad Rd, Bangna Bangkok 10260, Thailand	Tel: 66-2 745 6468-76 Fax: 66-2 745 6152 E-mail: thaikolon@thaikolon.co.th	Mr. Sunchai Chongvisal
6	The Bangkok Dock Company (1957) Limited	Shipbuilding & Repairing Industry	1668 New Road, Yannawa, Sathorn, Bangkok 10120, Thailand	Tel: 66-2 211 3040 Fax: 66-2 212 3448 E-mail: Bangkokdock1@hotmail.com	Captain Chumpon Promprasit
7	Asian Marine Services Public Company Limited (ASIMAR)	1. Shipbuilding & Repair Conversion 3. Engineering Work	128 Mu 3 Susawad Rd., Laemfapa, Prasamutjadee, Samutoparakarn, 10230, Thailand	Tel: 66-2 815 2060-7 Fax: 66-2 453 7213-4 E-mail: wwn@asima.com www.asima.com	Ms. Warawan Nghanthavee
8	Thai International Dockyard Company Limited	Shipbuilding & Repairing	119 Moo 2 Taiban Rd., Tumbon Taiban Amphur Maeng, Samutprakarn 10280, Thailand	Tel: 66-2 389 0540-4 Fax: 66-2 387 0421 E-mail: tindy@tindy.com	Lt. Chob Onnuch

No	会社名	業種	住所	電話/FAX/メール	連絡先・責任者
9	Jotun Thailand Co.,Ltd	Manufacturer and Distributor Paint	700/353 Moo 6 Donhuatch Muang Chon Buri 20000 Thailand	Tel: 66-2 3821 4824-25 Fax: 66-2 3821 4373 www.jotun.co.th	Mr. Per-Harald Engehaeth
10	China Shipbuilding Trading (Thailand) Company Limited)	Shipbuilding	22/331 Evergreen View Tower 2nd Floor Bangna-Trad km.5 Bangna Prakanong Bangkok 10260 Thailand	Tel: 66-2 751 4675-8 Fax: 66-2 751 4674 www.chainaships.com	Mrs. Zhang Qi
11	Commin Diethelm & Co Ltd Technology Division	Distributor for Cummins Diesel Engine	1696 New Petchburi Rd, Huaykhwang, Bangkok 10310 Thailand	Tel: 66-2 254 4900-13 Fax: 66-2 652 9417-19 www.dksh.com./thailand	Mr. Udom Charoenpong
12	Patanayon Choburi Company Limited	Agricultural, Industrial, Marine	40 Moo 13 Bangna-Trad k, m.8 Bangkaew, Bangplee Samutprakarn 10540 Thailand	Tel: 66-2 316 6036-9 Fax: 66-2 316 8408/740 3102 E-mail: patcogrp@patco.co.th	Sirichai Methavichit BSC.MIN.MD

No	会社名	業種	住所	電話/FAX/メール	連絡先・責任者
13	Siam Consortium Services Co.,Ltd.	* Representative of Yanmar Marine Engines * Ship Chandler Marine Equipment & Spare Parts Supplies * Consultant on Marine Technology & Management	103E7-107E9 Soi Damronglattapit Adnarong Rd., Klongtoey Bangkok 10110 Thailand	Tel: 66-2 249 8023/249 9733-4 249 9758-9/671 4101-3 Fax: 66-2 671 4105 E-mail: siamconsortium@hotmail.com	Mr. Cherd Roonguthai MD Amporn Yoosook GM. LT.CGR
14	Germanischer Lloyd (Thailand) Co.,Ltd	Ship Classification	16th Floor Richmond Office 75/57 Sukhumvit 26 Klongton Klongtoey Bangkok 10110 Thailand	Tel: 66-2 261 8401-2 Fax: 66-2 261 8403 E-mail: gl_bangkok@gl_group.com	Mr. Sutthi Siritantiwat
15	TOA-Chugoku Paints Co.,Ltd	* Marine Paints * Heavy Duty Coating * Industrial Paints * Container Paints * Wood Coating	159 Sermmmit Tower, 19th Floor, Soi Sukhumvit Sukhumvit Rd Klongtoey-Nua Wattana Bangkok 10110 Thailand	Tel: 66-2 260 2701-8 Fax: 66-2 260-2700 E-mail: tcpsales@ksc.th.com www.toa-chugoku.com	Mr. Pisit Boonchanya Mr. Tatsuhiko Tanaka

2.4.3. 主要造船所要目

表 25 主要造船所要目

造船所	SEA	Bangkok	Sunnava	Italthai	Harin	Marsun	Su-Thom	TINDY
事業		新造	新造	新造	新造	新造	新造	新造
	修繕	修繕	修繕	修繕		修繕	修繕	修繕
			ヨット	エンジンアリング		エンジンアリング		
船舶	鋼船	鋼船	鋼船 FRP、	鋼船	鋼船	鋼船、アルミ	鋼船、FRP	鋼船、アルミ
設立	1989	1957	2003	1978	1978	1980	1979	1991
従業員	70	82	32	670	126	250	40	95
船台				350mx34m	80mx14.5	60mx20m	30mx12m	180mx18mx2
浮きドック	123mx27m			200mx20m	130mx24m			
艀装岸壁	60m				250m			
クレーン	1x20t			7x25T	1x25t	2x200t		2x100t

表 26 主要造船所要目

造船所	PSP Marine	Seacrest	Silkline	Star Marine	Unithai	Asian Marine	Seat Boat	Chaopraya	Mits
事業	新造	新造	新造	新造	新造	新造	新造	新造	新造
	修繕	修繕		オフショア	修繕	修繕	修繕	修繕	修繕
			ヨット	エンジニア	オフショア	エンジニアリング			
船舶	鋼船	鋼船	鋼船、FRP	鋼船	鋼船	鋼船、FRP、アルミ	鋼船、アルミ	鋼船、アルミ	
設立	1997	1970	1991	1988	1990	1981	1991	1971	1986
従業員	190	50	14	36	983	430	120	300	80
船台	85mx22m	120m			120mx100m	125mx28m			185mx18m
浮きドック					280mx47m	80mx19m			
艀装岸壁					390m	165m,165m,			
クレーン		1x50t		1x20t	1x80t	1x100t			2x15t

2.5. タイ船主協会会員リスト

表 27 タイ船主協会会員リスト

船社名	住所	連絡先	船名	建造年	載貨重量	総トン数	船種
AMA MARINE LTD.	100/1 Vorasombat Building 19th Floor, Rama IX Rd., Huaykwang, Bangkok 10320	Tel : 0-22477611-2 FAX : 0-22477610	M.T.AMA 3	1981	3,605.7	1,985.0	Oil Tanker and Chemical Tanker IMO II / III
			M.T.TABTIM	1978	4,905.0	2,986.0	Oil Tanker and Chemical Tanker IMO II / III
			M.T.YANEE	1987	2,930.0	1,894.0	Oil Tanker and Chemical Tanker IMO II / III
ASIAN MARINE SERVICES PUBLIC COMPANY LIMITED (SHIPYARD)	128 Moo 3 Suksawad Rd., Prasamutjedee., Samutprakarn 10290	Tel : 0-28152060 FAX : 0-24537213-14	-	-	-	-	-
B.P.P. SUPPLY CO., LTD.	938 Rama III Rd., Bangpongpan, Yannawa, Bangkok 10120	Tel : 0-22948080-2 FAX : 0-22944897	M.T.B.P.P. 20	1977	2,293.0	1,282.0	Oil Tanker, Product Tanker
			M.T.B.P.P.14	1971	1,468.3	1,104.0	Oil Tanker, Product Tanker
			M.T.B.P.P.15	1969	2,645.7	1,989.3	Oil Tanker, Product Tanker
			M.T.B.P.P.16	1968	2,437.5	1,572.0	Oil Tanker, Product Tanker

M.T.B.P.P.19	1988	2,112.0	967.0	Oil Tanker, Product Tanker
M.T.B.P.P.21	1985	3,356.2	1,963.0	Oil Tanker, Product Tanker
M.T.B.P.P.23	1988	2,371.6	1,313.0	Oil Tanker, Product Tanker
M.T.B.P.P.4	1983	519.4	390.5	Oil Tanker, Barge
M.T.B.P.P.5	1984	130.7	98.3	Oil Tanker, Barge
M.T.B.P.P.6	1970	1,427.9	1,073.6	Oil Tanker, Product Tanker
M.T.B.P.P.12	1994	2,203.7	1,253.0	Clean Tanker
M.T.B.P.P.2	1968	371.8	279.6	Oil Tanker, Barge
M.T.B.P.P.25	1979	2,155.0	1,344.0	Clean Tanker
M.T.B.P.P.30	1980	1,841.0	924.0	Clean Tanker
M.T.B.P.P.31	1985	5,336.0	3,434.0	Clean Tanker
M.T.RATANACHAIK HONSONG 3	1968	338.0	254.5	Oil Tanker, Barge
M.T.RC	2000	113.1	85.0	Barge
M.T.SIAM VARICH	1972	2,031.0	590.4	Clean Tanker
M.T.SRI NAKHON	1974	1,165.0	303.8	Clean Tanker
M.T.SRI PAKNAKHON	1978	1,326.3	321.0	Clean Tanker
M.T.SRI	1976	988.0	273.0	Clean Tanker

					PAKPHANANG								
BHUREEMAS NAVEE CO., LTD.	Mano Tower 153 2/F Soi 39 Sukumvit Rd, Klongton-Nua Wattana Bangkok 10110	Tel : 02-2961065 FAX : 02-2961098	-	-								-	
BIG SEA CO., LTD	454 Rama 3 Rd., Bangkhlo, Bangkoklaem, Bangkok 10120	Tel : 0-2292-2758, , 0-22922761 FAX : 0-22920365	1989	2,076.4	M.T.ANCHARA	1989	2,076.4	1,012.0	1,012.0	Oil Tanker			
			1988	1,830.4	M.T.BIG SEA 10	1988	1,830.4	1,014.0	1,014.0	Oil Tanker			
			1985	1,908.6	M.T.BIG SEA 11	1985	1,908.6	997.0	997.0	Oil Tanker			
			1985	1,878.1	M.T.BIG SEA 12	1985	1,878.1	1,023.0	1,023.0	Oil Tanker			
			1979	2,335.4	M.T.BIG SEA 2	1979	2,335.4	990.9	990.9	Oil Tanker			
			1978	2,582.1	M.T.BIG SEA 6	1978	2,582.1	997.9	997.9	Oil Tanker			
			1988	1,929.1	M.T.BIG SEA 9	1988	1,929.1	978.0	978.0	Oil Tanker			
			1991	2473.5	M.T.BIGSEA 14	1991	2473.5	1455.0	1455.0	Oil Tanker			
			1986	3,027.0	M.T.PAKKINEE	1986	3,027.0	1,961.0	1,961.0	Oil Tanker			
			1989	2,076.4	M.T.ANCHARA	1989	2,076.4	1,012.0	1,012.0	Oil Tanker			
C.&P. COMPANY LIMITED	Mano Tower, 153 Soi 39, Sukhumvit Rd., Klongton nua, Wattana, Bangkok 10110	Tel : 0-2260-0050 FAX : 0-2259-9828	1984	6,752.0	M.T. C.P.32	1984	6,752.0	3,802.0	3,802.0	Oil Tanker			
			1982	4,950.0	M.T. C.P.33	1982	4,950.0	3,508.0	3,508.0	Oil Tanker			
			1983	3,335.0	M.T. C.P.34	1983	3,335.0	1,892.0	1,892.0	Oil Tanker			
			1982	2,374.0	M.T. C.P.35	1982	2,374.0	1,311.0	1,311.0	Oil Tanker			
			1993	3,311.0	M.T. C.P.36	1993	3,311.0	1,961.0	1,961.0	Oil Tanker			
			1993	2,926.0	M.T. C.P.37	1993	2,926.0	1,794.0	1,794.0	Oil Tanker			
			2001	6,712.0	M.T. C.P.38	2001	6,712.0	4,357.0	4,357.0	Chemical			
CHEMSTAR	1622 Phaholyothin Rd.	Tel : 02-5121661	2005	596.0	MT.ASIA STAR	2005	596.0	427.0	427.0	Oil & Chemical			

SHIPPING CO., LTD	Chantharakasem Chatuchak, Bangkok 10900	FAX : 02-5138006	MT.AYUDHYASTAR	0000	3500.0	993.0	Double Hull//Oil Product
			MT.BITUMEN STAR	1984	1,751.0	1,213.0	Oil Tanker
			MT.CHUMPHON STAR	2002	2,990.0	1,957.0	Oil & Chemical
			MT.DHONBURI STAR	2001	750.0	497.0	Oil & Chemical
			MT.KAIWALEE STAR	1987	1301.6	915.0	Oil & Chemical Tanker
			MT.SHINING STAR	1986	698.0	523.0	Oil Tanker
			M.T.SONGKLASTAR	0000	2250.0	1190.0	Oil Tanker
			M.T.SOUTHERN STAR/	1992	3000.0	1829.0	Oil Tanker
			T.B SOUTHERN BARGE	-	-	-	-
			MT. SUKHOTHAI STAR	0000	4474.5	2518.0	Oil Tanker
			M.V.CHIANG DAO	1991	1,300.0	694.0	Container
			MT.DELTA 3	1980	1,321.8	849.0	Asphalt Tanker
			MT.DELTA 7	1986	1,252.6	992.0	Asphalt Tanker
MT.TASCO 1	1995	4,685.0	4,063.0	Asphalt Tanker			
COTS SHIPPING (THAILAND) CO., LTD	334/12-13 Rama VI Rd., Mahaphruttharam, Bangrak, Bangkok 10500	Tel : 0-22331807-9 FAX : 0-22361781					
DELTA SHIPPING CO., LTD	118/1 Tipco Tower, Rama 6 Rd., Samsennai, Phayathai, Bangkok	Tel : 0-22736000 FAX : 0-22713370/ 0-2279-9539					

	10400				1984	4,993.0	3,293.0	Asphalt Tanker
GOLD SHIP LINE CO., LTD	229/13 Moo.5 Klongsamprawat, Latkrabang District, Bangkok 10520	Tel: 0-2171-7138-9 Fax: 0-2171-7140	MT.TASCO 2	MT.TASCO 2	2003	7,146.0	6,035.0	Asphalt Tanker
				LOTUS	1986	1,114.4	989.0	GAS CARRIER
HARIN PANICH CO., LTD.	38, 38/7-8 Mahaisawan Road, Bangkholaem, Bangkok 10120	Tel : 0-26890667-9, 0-22911841 FAX : 0-22911310	M.V.HARINPANICH 19	MARIGOLD	1985	4,251.5	4,554.0	GAS CARRIER
				M.V.HARINPANICH 19	1980	900.0	767.0	General Cargo
HARINSUIT TRANSPORT CO., LTD., THE	38/9-14 Mahaisawan Rd.(Right Side), Bangkholaem,Bangkok 10120	Tel : (+662) 289-1156 ,(+662)289 -1168 FAX : (+662)291-8618	M.V.HARIN TRANSPORT 12 M.V.HARIN TRANSPORT 14 M.V.HARIN TRANSPORT 15 M.V.HARIN TRANSPORT 16 M.V.HARIN TRANSPORT 17 M.V.HARIN TRANSPORT 20 M.V.HARIN TRANSPORT 21	M.V.HARIN TRANSPORT 12	1980	1,427.3	495.3	General Cargo
				M.V.HARIN TRANSPORT 14	1979	1,590.0	500.0	General Cargo
				M.V.HARIN TRANSPORT 15	1979	1,598.4	499.8	General Cargo
				M.V.HARIN TRANSPORT 16	1978	1,590.8	1,095.0	General Cargo
				M.V.HARIN TRANSPORT 17	1980	1,584.8	1,165.1	General Cargo
				M.V.HARIN TRANSPORT 20	1985	1,600.0	1,408.0	General Cargo
				M.V.HARIN TRANSPORT 21	1987	1,400.0	1,273.0	General Cargo

IRPC PUBLIC COMPANY LIMITED	169 M.9, Suksawat 45 Rd., Bangkok, Amphur, Prapradang, Samutprakarn 10130 123 Sun Towers Bldg., B12 Fl., Vipavaderungsit Rd., Jompol, Jatujak, Bangkok 10900	Tel : 02-4640499 #103 , 02-6497242 FAX : 02-4640500 , 02-6497001-3	M.T.IRPC 1	1996	675.4	507.8	Oil Tanker
			M.T.IRPC 2	1996	675.4	507.8	Oil Tanker
			M.T.IRPC 3	1996	675.4	507.8	Oil Tanker
			M.T.IRPC 4	1996	675.4	507.8	Oil Tanker
			M.T.IRPC 5	1996	675.4	507.8	Oil Tanker
			M.T.IRPC 6	1996	675.4	507.8	Oil Tanker
			M.T.IRPC 7	1996	378.3	487.5	Oil Tanker
JUTHA MARITIME PUBLIC COMPANY LIMITED	Mano Tower, 153 Sukumvit 39, Klongton Nua, Wattana, Bangkok 10110	Tel : 0-22600050 FAX : 0-22599825	M.V. JUTHA BUDDHACHART	1999	8,976.0	7,659.0	General Cargo
			M.V. JUTHADHAMM ARAKSA	1995	8,691.0	6,275.0	General Cargo
			M.V. JUTHAMALEE	2009	11,941.8	3,824.0	General Cargo
			M.V. JUTHAPATTHAMA	1996	8,240.9	6,635.0	General Cargo
			M.V. JUTHA SUPHANNIKA	1984	12,680.0	10,330.0	Multi-Purpose
			M.V. JUTHA VASANA	2000	8,974.0	7,659.0	General Cargo
			M/T KANCHANA SILVER	1984	6,245.0	3,914.0	Oil & Chemical Tanker
KANCHANA MARINE CO., LTD	88 Soi Bangna-Trad30, Bangna-Trad Rd, Bangna Bangkok	Tel : 02-3991103-4 FAX : 02-3991560	M/T KANCHANA RICHNESS	1985	6,479.3	3,932.0	Oil & Chemical Tanker

KANGVAL (1989) CO., LTD	2210/69 Naradhiwas Rajanagarindra Road, Chongnonsee, Yannawa, Bangkok 10120	Tel : 0-22854925, 0-22854927 FAX : 0-22854914	M/T AV.138	1976	1,144.0	663.0	Oil Tanker
			M/T KV.1	1969	813.0	469.1	Bunker Barge
			M/T KV.10	1980	2,250.0	1,196.6	Oil Tanker
			M/T KV.2	1989	0.0	221.2	Bunker Barge
			M/T KV.3	1989	0.0	177.9	Bunker Barge
			M/T KV.4	1989	0.0	134.6	Bunker Barge
			M/T KV.5	1990	0.0	119.1	Bunker Barge
			M/T KV.8	1991	0.0	129.1	Bunker Barge
			M/T KV.9	1975	2,445.0	1,220.3	Oil Tanker
			M/T KV128	1984	800.0	495.0	Oil Tanker
KHUN NATHEE CO., LTD	88 Soi Bangna-Trad 30,Bangna-Trad Rd., Bangna, Bangkok 10260	Tel : 0-2383-9151, 0-2398-9152 FAX : 0-2398-6300	M.T.GAS NATHEE	1989	969.0	676.0	LPG Tanker
			M.T.SRIRACHAENER GUY	1980	88,557.0	49,827.0	Oil Tanker
			M.T.SRIRACHA TRADER	1995	44,999.0	28,628.0	Oil Tanker
N.T.L.MARINE CO., LTD	88 Soi Bangna-Trad 30, Bangna, Bangna, Bangkok 10260	Tel : 0-2398-5891-3 FAX : 0-2398-5890	MT.SRIPHANG-NGA	1987	1998.5	929.0	Oil Tanker
			M.V.CHIANG GON	1995	1,300.0	670.5	Container
NAM YUEN YONG SHIPPING CO., LTD	334/12-13 Rama IV Rd., Mahaphruttharam, Bangrak, Bangkok 10500	Tel : 0-2236-1768-9 FAX : 0-2236-1781, 0-2233-3801	M.V.CHIANG TUN	1995	1,300.0	670.5	Container
			M.V.CHIANG YUN	1995	1,300.0	670.5	Container
			M.V.CHIANG LAAN	1994	1,300.0	670.5	Container
NATHALIN CO.,	88 soi Bangna-Trad 30,	Tel :	MT.SRI KRABI	1987	2,016.4	985.0	Oil Tanker

LTD.	Bangna-Trad Rd., Bangna, Bangna, Bangkok 10260	0-2398-7885-6, 0-2399-3938, 0-2398-7285 FAX : 0-2398-7286, 0-2398-2782	MT.SRI PHUKET	1982	4,997.0	2,894.0	Oil Tanker
			MT.SRI TAPEE	1981	1,818.3	916.3	Oil Tanker
NAVAKUN TRANSPORT CO., LTD.	1588/11 Office Park, Bangna-Trad Rd., Bangna Bangkok 10260	Tel : 02-1820387-8 FAX : 02-1820386-7	NAVAKUN 11	1977	781.7	698.7	Oil and LPG Tanker
			NAVAKUN 14	1979	741.5	698.7	Oil and LPG Tanker
			NAVAKUN 16	1979	752.0	699.1	Oil and LPG Tanker
			NAVAKUN 17	1980	785.5	727.0	Oil and LPG Tanker
			NAVAKUN SKALA	1986	1,142.0	991.0	Oil and LPG Tanker
NGOW HOCK AGENCY CO., LTD (FOUNDER MEMBER)	Panjathani Tower, 7-9 th Floor,127 Rachadapisek Road, Chongnonsee, Yannawa, Bangkok 10120	Tel : 0-2296-1475 FAX : 0-2296-1337	-	-	-	-	-
P.I.N.K.TRANSPOR TS AND TRADING	21th Fl., S.S.P.Tower II, 116/76 Na Ranong Rd.,	Tel : (66)2-2403451-5	M/T Mongkolsamut 1	1970	2,537.0	1,046.9	Oil Tanker
			M/T Mongkolsamut 5	1969	3,168.0	1,585.7	Oil Tanker

CO., LTD	Klongtoey, Phrakonong, Bangkok 10110 Thailand	FAX : (66)2-671-9451 , 0-2671-0479	M/T Mongkolsamut 8	1983	3,352.0	1,993.0	Oil Tanker
PHULSAWAT NAVY CO., LTD	47 Pra-Athit Rd., Banglumpoo,Pranakorn,B angkok 10200	Tel : 0-22811133-5 FAX : 0-22801392	M.V.BANGBUA	1975	7,423.6	4,395.0	General Cargo
			M.V.BANGKHONTHI	1974	7,826.8	4,895.0	General Cargo
			M.V.BANGMUNNAK	1975	7,140.7	4,290.0	General Cargo
			M.V.BILLION	1978	7,778.0	4,962.0	General Cargo
			M.V.DELIGHT	1980	6,331.0	3,830.0	General Cargo
			M.V.DIBENA EXPRESS	1975	7,851.0	4,792.0	General Cargo
			M.V.DIBENA HAPPY	1974	7,824.5	4,837.0	General Cargo
			M.V.DIBENA JOY	1974	7,767.7	4,837.0	General Cargo
			M.V.DIBENA UNITY	1974	7,845.0	4,750.0	General Cargo
			PRECIOUS SHIPPING PUBLIC COMPANY LIMITED	7th Fl., Cathay House, 8/30 North Sathorn Rd., Bangkok 10500	Tel : 0-26968800 FAX : 0-22367654 , 0-26338460	APISARA NAREE	1996
BOONTRIKA NAREE	1990	27,881.0				17,066.0	Bulk Carrier
BUSSARA NAREE	1997	18,573.0				11,474.0	Bulk Carrier
CHALOTHORN NAREE	1996	27,079.0				16,285.0	Bulk Carrier
CHOLLADA NAREE	1997	18,485.0				11,474.0	Bulk Carrier
DUSITA NAREE	1997	18,486.0				11,474.0	Bulk Carrier
EMWIKA NAREE	1997	18,462.0				11,474.0	Bulk Carrier
FONTHIDA NAREE	1996	28,484.0				17,429.0	Bulk Carrier
FUJISAN MARU	1976	16,922.0				10,334.0	Bulk Carrier

PUBLIC COMPANY LIMITED	281 Soi Sutthipong 1, Sutthisarnvinichai Rd., Dindaeng, Bangkok 10400	0-2277-8962/ Suratthani 0-7747-1154	RAJA 5	1950	-	928.0	Ferry
			RAJA 6	1950	-	1,009.5	Ferry
			WANG KAEW	1950	-	991.0	Ferry
			WANG NAI	1950	-	795.0	Ferry
			WANG NGEON	1950	-	653.0	Ferry
			WANG NOK	1950	-	878.0	Ferry
			WANG THONG	1950	-	639.0	Ferry
			KNO 101	1994	-	284.7	W/FiFi/OT
			KNO 102	1994	-	284.7	W/FiFi/OT
			KNO 103	1994	-	284.7	W/FiFi/OT
			KNO 201	1994	-	41.0	PILOT BOAT
			KNO 301	1994	-	45.8	WORK/SURVEY BOAT
			KNO 401	1994	-	9.1	ROPE HANDING
			KNO 402	1994	-	9.1	ROPE HANDING
S.C.MANAGEMENT CO., LTD.	S.C.Tower 88 , The Park Land Road , Bangna, Bangna, Bangkok 10260	Tel : 0-23419100-49 , 0-23419900-99 FAX : 0-23419988 0-2341-9984	LOVE GISTIC 7	2006	7,800.0	3,905.0	CONTAINER BARGE
			LOVE GISTIC 8	2006	7,800.0	3,905.0	CONTAINER BARGE
			LOVE GISTIC 9	2007	10,000.0	5,925.0	DOCK CARGO BARGE
			NP GLORY4	2006	2,372.0	1,687.0	-
			NP GLORY5	2003	3,106.0	2,140.0	-

NP GLORY6	2005	2,372.0	1,668.0	-
NP LOTUS	2006	-	248.0	TUG BOAT
NP MAPLE	2006	-	248.0	TUG BOAT
NP SURATTHANI 1	2004	2,736.4	2,839.0	-
NP SURATTHANI 2	2004	2,736.4	2,839.0	-
NP SURATTHANI 3	2004	2,736.4	2,839.0	-
RS 1	1967	-	171.6	W/FiFi/F
RS 10	1966	-	201.3	W
RS 11	1968	-	173.0	W
RS 14	1993	-	34.3	W/F/OT
RS 15	1993	-	34.3	W/F/OT
RS 16	1993	-	34.3	W/F/OT
RS 17	1973	-	289.1	W/FiFi/F
RS 18	1996	-	28.4	W/F/OT
RS 19	1967	-	165.0	W
RS 2	1967	-	188.9	W/FiFi
RS 20	1971	-	199.7	W
RS 21	1980	-	196.0	W/FF/F/DCS/O ST
RS 22	1973	-	189.4	W/FF/F/DCS/O ST
RS 23	1977	-	294.5	W/FF/F/DCS/O ST

RS 24	1978	-	286.1	W/FF/F/DCS/O ST
RS 25	1973	-	199.0	W/FF/F/DCS/O ST
RS 26	2006	-	27.8	TUG BOAT
RS27	2006	-	27.8	TUG BOAT
RS 3	1993	-	12.6	W/FiFi
RS 4	1971	-	257.5	W/FiFi/F/DRY
RS 6	1966	-	204.6	W
RS 7	1970	-	200.6	W
RS 9	1968	-	175.1	W
SC 11	1981	-	42.7	PILOT/LAUNCHI NG BOAT
SC 12	1978	-	28.5	PILOT/LAUNCHI NG BOAT
SC 14	1970	-	32.2	PILOT/LAUNCHI NG BOAT
SC 15	1980	-	28.4	PILOT/LAUNCHI NG BOAT
SC16	1981	-	20.0	PILOT BOAT
SC17	1978	-	45.0	PILOT BOAT
SC 21	1989	-	7.4	ROPEHANDING/ UTILITY BOAT

SANG THAI NAVIGATION 1977 CO., LTD	35th Floor, Sinn Sathorn Tower, 77/149-151 Krungdhonburi Rd., Klongtonsai, Klongsarn, Bangkok 10600	Tel : 0-28621485 FAX : 0-28621495	SC 22	1995	-	11.7	R O P E HANDING/UTILI T Y B o a t
			SC 23	1996	-	15.6	ROPE HANDING/UTILI TY BOAT
			SC 31	1981	-	41.4	FIFI/ANTI-POLL UTION WORK BOAT
			SC32	1980	-	270.0	W/FF/F/DCS/O ST
			SC 33	1985	-	29.0	TUG BOAT
			SC GLORY	2005	-	244.0	CREW BOAT
			SANG THAI EAGLE	1981	6,129.3	5,043.0	General Cargo
			SANG THAI GLORY	1979	6,508.6	3,904.0	General Cargo
			SANG THAI IRIS	1981	6,120.0	5,029.0	General Cargo
			SANG THAI LUMBER	1974	7,417.2	4,535.0	General Cargo
			SANG THAI OCEAN	1977	11,757.0	7,474.0	General Cargo
			SANG THAI QUARTZ	1981	4,848.5	2,875.0	General Cargo
			SANG THAI RADIUM	1980	4,743.0	2,974.0	General Cargo
			SANG THAI TIMBER	1970	4,861.3	2,832.0	General Cargo
			SANG THAI XEBEC	1978	8,427.8	4,887.0	General Cargo
SEA BRIGHTON	1994	6,903.0	5,601.0	General Cargo			

				SEA CASTLE	2000	7,963.0	4967.0	General Cargo
				SEA DRAGON	1984	7,017.1	5,463.0	General Cargo
				SEA HONOUR	1996	8,669.0	6264.0	General Cargo
				SEA MIRACLE	1983	5,185.8	2,820.0	General Cargo
				SEA SUNNY	1984	6,264.9	3,817.0	General Cargo
				SEA WALRUS	1984	5,650.7	4,365.0	General Cargo
				SEA ZENITH	1987	9,379.0	5,548.0	General Cargo
				SEATRAN FERRY1	1987	13.8	1,109.0	Ferry
				SEATRAN FERRY3	1987	14.0	492.0	Ferry
				SEATRAN FERRY 4	1984	13.3	961.0	Ferry
				SEATRAN FERRY 5	1983	13.0	1,099.0	Ferry
				SEATRAN FERRY6	1986	13.5	1,593.0	Ferry
				SEATRAN FERRY7	1990	0.0	905.0	Ferry
				SEATRAN VENTURE	1978	2,589.0	6,347.0	Ferry
				M.T.SIAMRAPEEPAR N	1989	1,902.0	1,012.0	Oil Tanker
				M.T.SIAM SATHAPORN	1982	4,953.5	3,119.0	Oil Tanker
				M.T.SIAM THANANYA	1986	2,490.0	1,386.0	Oil Tanker
				M.T.SM19	1988	1,899.0	1,041.0	Oil Tanker
				M.T.SM20	1989	4,998.3	3,039.0	Oil Tanker
				M.V.RATANA THIDA	1996	18,196.0	13,188.0	Container
SEATRAN FERRY CO., LTD	599/1 Rimtangrotfai-Chongnon sri Rd., Klongtoey District, Bangkok 10110	Tel : 02-2402582 FAX : 02-2495988						
SIAM MONGKOL MARINE CO., LTD	139Ratburana Rd., Bangpakok, Ratburana, Bangkok 10140	Tel : 66-2-8713302 (4 Lines) FAX : 66-2-4284166 , 66-2-8713301						
SIAM PAETRA	29th Fl., Panjathani	Tel : 0-22936116						

INTERNATIONAL CO., LTD	Bldg., 127/34 Ratchadapisek Rd., Chongnonsee, Yannawa, Bangkok 10120	(auto) FAX : 0-22961160-1							
T.J.MARINE CO., LTD.	1093/38 Central City Tower1, 9th Fl., Unit 2 Moo 12, Bangna-Trad Road, Bangna, Bangkok 10260	Tel : 0-23995733-7 FAX : 0-23995732	M.V. THAIROSE	1997	8,668.0	6,264.0			General Cargo
THAI INTERNATIONAL TANKERS CO., LTD	610/5-6 Songwad Rd., Samphantawongse, Bangkok 10100	Tel : 0-2226-5705-10 FAX : 0-2622-6377, 0-2223-0916	M.T.DANAI 1	1981	3,990.0	2,142.0			Oil Tanker
			M.T.DANAI 2	1993	1,976.6	989.0			Oil Tanker
			M.T.DANAI 3	1983	1,702.0	986.0			Oil Tanker
			M.T.DANAI 4	1986	1,924.1	964.0			Oil Tanker
			M.T.DANAI 5	1986	2,183.0	1,358.0			Oil Tanker
			M.T.DANAI 6	1990	1,906.0	949.0			Oil Tanker
			M.T.DANAI 7	1988	1,986.7	998.0			Oil Tanker
			M.T.DANAI 8	1988	1,933.2	987.0			Oil Tanker
THAI MARITIME	15th Floor, Manorom	Tel : 0-2672-8690	M.T.ORAPIN 1	1981	2,739.7	1,598.0			Oil Tanker
			M.T.ORAPIN 2	1981	2,764.5	1,598.0			Oil Tanker
			M.T.ORAPIN 3	1981	4,983.8	2,951.0			Oil Tanker
			M.T.ORAPIN 4	1983	3,827.0	2,176.0			Oil Tanker
			M.T.SUPPAVAN 1	1979	6,135.5	3,535.8			Oil Tanker
			-	-	-	-			-

NAVIGATION CO., LTD. (FOUNDER MEMBER)	Bldg,3354/51 Rama IV Rd, Klongtoey Bangkok 10110	FAX : 0-2249-7578, 0-2249-0108							
THAI PROSPERITY TERMINAL CO., LTD. (Terminal Operator)	98 Moo 8 Poochaosamingprai Rd., Samrongtai, Prapradang, Samutprakarn 10130	Tel : 0-27544501-9 FAX : 0-27544516 , 0-23847593-4	-	-	-	-	-	-	-
THAIOIL MARINE CO., LTD.	2/84 Moo15 Old Railway Rd., Bangchak, Phrakanong, Bangkok 10260	Tel : 0-23310080-5 FAX : 0-23310086	MT. KAMEE	1984	6,692.0	4,085.0	Oil / Chemical		
			MT. THAIOIL 10	1996	32,250.0	21,367.0	Oil Tanker		
			MT. THAIOIL 11	2009	5,681.0	7,156.0	Oil Tanker		
			MT. THAIOIL 2	1990	4,998.1	3,018.0	Oil Tanker		
			MT. THAIOIL 3	1991	4,998.2	3,018.0	Oil Tanker		
			MT. THAIOIL 9	2008	5,681.0	7,177.0	Oil/Chemical IMO II		
THE BANGKOK DOCK COMPANY (1957) LIMITED	174/1 New Road, Yannawa, Sathorn, Bangkok 10120 174/1	Tel : 02-2113040 FAX : 02-2123448	-	-	-	-	-	-	
THORESEN & CO., (BANGKOK) LTD./THORESEN THAI AGENCIES PLC.	26/26-27 Orakarn Bldg, 8th Floor, Soi Chidlom, Ploenchit Road, Kwang Lumpinee, Khet	Tel : +66 (0) 2250-0569-74 FAX : +66 (0) 2254-9417	M.V. THOR CAPTAIN	1977	20,717.0	18,680.0	General Cargo		
			M.V. THOR CHAMPION	1982	25,150.0	18,732.0	General Cargo		
			M.V. THOR CONFIDENCE	1983	24,900.0	18,800.0	Multi-Purpose Cargo Ship		
			M.V. THOR	1991	43,497.0	25,905.0	Bulk Carrier		

DYNAMIC								
M.V.THOR ENDEAVOUR	1995	42,529.0	25,676.0					Bulk Carrier
M.V.THOR ENERGY	1994	42,529.0	25,676.0					Bulk Carrier
M.V.THOR ENTERPRISE	1995	42,529.0	25,676.0					Bulk Carrier
M.V.THOR FRIENDSHIP	2009	54,123.0	31,487.0					Bulk Carrier
M.V.THOR HARMONY	2002	47,111.0	32,491.0					Bulk Carrier
M.V.THOR HORIZON	2002	47,111.0	32,491.0					Bulk Carrier
M.V.THOR INTEGRITY	2001	53,765.0	30,008.0					Bulk Carrier
M.V.THOR JUPITER	1986	35,907.0	24,632.0					Bulk Carrier
M.V.THOR LOTUS	1985	35,458.0	2,295.0					Bulk Carrier
M.V.THOR NAUTICA	1988	18,235.0	13,936.0					General Cargo
M.V.THOR NAUTILUS	1988	18,235.0	13,651.0					Multi-Purpose Cargo Ship
M.V.THOR NAVIGATOR	1987	18,110.0	13,688.0					General Cargo
M.V.THOR NECTAR	1990	21,147.0	15,506.0					General Cargo
M.V.THOR	1989	20,377.0	15,520.0					Multi-Purpose

TIPS CO., LTD. (Terminal Operator)	127/34 Panjathani Bldg.29 th Fl., Ratchadapisek Rd., Chongnonsee, Yannawa, Bangkok 10120 Laem- Chabang Port No.B4, Toong-Sukhla, Sriracha, Chonburi 20231	Tel : 0-3849-0111-20 FAX : 0-3849-0121-2	NEPTUNE							Cargo Ship
			M.V.THOR NEREUS	1988	21,094.0	15,504.0	15,504.0			General Cargo
			M.V.THOR NEXUS	1989	20,377.0	15,520.0	15,520.0			Multi-Purpose Cargo Ship
			M.V.THOR ORCHID	1985	34,800.0	20,904.0	20,904.0			Bulk Carrier
			M.V.THOR PILOT	1986	33,400.0	21,531.0	21,531.0			Bulk Carrier
			M.V.THOR SEA	1986	16,211.0	10,572.0	10,572.0			General Cargo
			M.V.THOR SKIPPER	1986	16,211.0	10,572.0	10,572.0			General Cargo
			M.V.THOR SKY	1986	16,225.0	10,572.0	10,572.0			General Cargo
			M.V.THOR SUN	1986	16,223.0	10,572.0	10,572.0			General Cargo
			M.V.THOR TRANSIT	1986	23,449.0	16,314.0	16,314.0			General Cargo
			M.V.THOR TRANSPORTER	1985	23,930.0	16,784.0	16,784.0			General Cargo
			M.V.THOR WAVE	1998	39,042.0	25,889.0	25,889.0			Bulk Carrier
			M.V.THOR WIND	1998	39,087.0	25,889.0	25,889.0			Bulk Carrier

TMN CO., LTD	3354/50 Manorom Building 15th Floor, Rama IV Rd., Klongton, Klongtoey, Bangkok 10110	Tel : 66-26717200 FAX : 66-26715200	M.T.TMN PONEER	2009	7,124.9	5,683.0	Chemical Tanker IMO II
TRANS OCEAN SUPPLY (1992) CO., LTD.	123/19 Nonsri Rd, Chongnonsri Yannawa Bangkok 10120	Tel : 02-6812316-9 FAX : 02-6812315	MT.CHOTTANASIN	0000	2,050.2	999.2	Tanker
			MT.PHOKATANASI N	2004	1,000.0	488.0	Tanker
			MT.THEPTARA 3	1989	760.0	491.0	Tanker
UNIOIL BULK TRANSPORT CO., LTD.	88 Soi Bangna-Trad 30, Bangna-Trad Rd,, Bangna, Bangna, Bangkok 10260	Tel : 0-2398-5891-3 FAX : 0-2398-5890	MT.SIRI THANA	1985	4,999.4	3,104.0	Oil Tanker
UNITED TANKERS CO., LTD	88 Soi Bangna-Trad 30, Bangna-Trad Rd, Bangna, Bangna Bangkok 10260	Tel : 0-2398-5891-3 FAX : 0-2398-5890	MT.SIRI KAMOL	1988	2,499.0	1,379.0	Oil Tanker
			MT.SIRI PALA	1987	1932.0	1,025.0	Oil Tanker
UNITHAI LINE PUBLIC COMPANY LIMITED	25 Alma Link Bldg., 11th FL., Soi Chidlom, Ploenchit Rd., Pathumwan, Bangkok 10330	Tel : 0-2254-8400 FAX : 0-2254-8424, 0-2255-1155	-	-	-	-	-
UNITHAI	Laemchabang Port, 48	Tel : 038-407000	-	-	-	-	-

SHIPYARD AND ENGINEERING LTD. (SHIPYARD)	Moo 3 Tungskhla, Sriracha Chonburi 20230	FAX : 038-407009							
UNWISE OFFSHORE LIMITED	25 Alma Link Bldg., 11th Fl., Soi Chidlom Ploenchit Rd., Lumpini Pathumwan Bangkok 10300	Tel : 02-2548400 FAX : 02-2551155	UNIEXPRESS 10	2007	0.0	205.0			Crew Boat
			UNIEXPRESS 11	2008	0.0	205.0			Crew Boat
			UNIEXPRESS 12	2008	0.0	205.0			Crew Boat
			UNIEXPRESS 13	2008	0.0	205.0			Crew Boat
			UNIEXPRESS 14	2008	0.0	205.0			Crew Boat
			UNIEXPRESS 15	2008	0.0	205.0			Crew Boat
			UNIEXPRESS 16	2008	0.0	205.0			Crew Boat
			UNIEXPRESS 17	2009	0.0	205.0			Crew Boat
			UNIEXPRESS 2	2005	0.0	180.0			Crew Boat
			UNIEXPRESS 8	2003	0.0	161.0			Crew Boat
V.C.C.INTER MARINE SERVICE & TRANSPORT CO., LTD	19/269 Moo 6 Srinakarin Road, Bangmuangmai, Amphur Muang, Samutprakarn 10270	Tel : 02-7598973 FAX : 02-7599944	UNIEXPRESS 9	2007	0.0	205.0			Crew Boat
			M.T.PATARA VARIN	1972	2,601.0	1,253.0			Tanker
			M.T.PATARA VARIN 2	1989	1,975.9	992.0			Tanker
			M.T.V.C.C.	2003	939.4	482.0			Tanker
			M.T.V.C.C. 2	2004	550.2	351.0			Tanker
			M.T.CHUTIPA 1	1987	22	1,034.0			Oil Tanker
V.L.ENTERPRISE CO., LTD	45 Asoke-Dindang Rd., Makkasan, Bangkok 10400	Tel : 0-22546604-5 FAX : 0-26527274-5,	M.T.CHUTIPA 2	1988	21	1,029.0			Oil Tanker
			M.T.CHUTIPA 3	1988	21	1,043.0			Oil Tanker

		0-22548749		M.T.CHUTIPA 4	1987	22	789.0	Oil Tanker
				M.T.PLATINUM 1	1990	19	1,069.0	Oil Tanker
				M.T.V.L.10	1989	20	1,846.0	Oil Tanker
				M.T.V.L.3	1983	26	1,290.0	Oil Tanker
				M.T.V.L.4	1987	22	1,017.0	Oil Tanker
				M.T.V.L.5	1988	21	1,228.0	Oil Tanker
				M.T.V.L.6	1988	21	1,042.0	Oil Tanker
				M.T.V.L.7	1987	22	1,022.0	Oil Tanker
				M.T.V.L.8	1992	17	3,274.0	Oil Tanker
VESCON-THAI SHIPPING CO., LTD.	1168/76 26th Floor Lumpini Tower,Rama IV Rd., Tungmahamek, Sathorn, Bangkok 10120	Tel : 0-2287-0600 FAX : 0-2287-5055		SRCHIANGTHONG	1991	2,792.0	1,912.0	Container
VISION MARINE CO., LTD.	21th Fl., S.S.P.Tower II, 116/76 Na Ranong Rd., Klungtoey, Phrakonong, Bangkok 10110 Thailand	Tel : (66)2-2403451-5 FAX : (66)2-6710479		M.T.ENCON NO.2	1976	1,808.4	697.0	Product Tanker
				M.T.ENCON NO.3	1982	1,794.3	870.8	Product Tanker
				M.T.NAVAKUN 15	1981	1,821.9	697.8	Product Tanker
WORLD WIDE TRANSPORT CO.,LTD	119/40 Moo8, Bangna-Trad Rd., KM.3, Bangna, Bangkok 10260	Tel : 0-23993366-75 FAX : 0-23993377		MT. GAS EAGLE	1981	757.9	797.0	Gas Carrier
				MT. GAS PRINCESS	1981	786.5	796.0	Gas Carrier
Y.K.NAMSAI CO., LTD.	938 Rama 3 Road Bangpongpang Yannawa Bangkok 10120	Tel : 02-2948080-2 FAX : 02-2944897		SRITARA	1978	2,370.8	1,398.7	Tanker



この報告書はボートレースの交付金による日本財団の助成金を受けて作成しました。

タイ国における新造船建造並びにそれに伴う関連産業の
市場需要と今後の投資環境に関する調査報告書

2012年（平成24年）3月発行

発行 社団法人 日本船用工業会

〒105-0001 東京都港区虎ノ門 1-13-3
虎ノ門東洋共同ビル 5階
TEL 03-3502-2041 FAX 03-3591-2206

財団法人 日本船舶技術研究協会

〒107-0052 東京都港区赤坂 2-10-9 ラウンドクロス赤坂
TEL 03-5575-6426 FAX 03-5114-8941

本書の無断転載、複写、複製を禁じます。